



*San Francisco Bay Area Section*

# 2015 ANNUAL ACTIVITIES REPORT



[www.sfbayite.org](http://www.sfbayite.org)



---

2015-2016 Officers: President Paul Stanis | Vice-President Lin Zhang | Treasurer Bhanu Kala | Secretary Frank Penry

---

March 30, 2016

Mr. Amit Kothari, P.E.

ITE Technical Chair – Western District

Dear Mr. Kothari:

We proudly present our 2015 Annual Activities Report. According to the ITE Strategic Plan, March 2014, ITE's big audacious goal is *"to bring together transportation's body of knowledge and professional voice for the benefit of society"*. In alignment with this goal, our section continued its excellent participation with the transportation professionals in the San Francisco Bay Area through various technical, social, legislative, and student activities. Additionally, we conducted special programs, including a mentoring program for students, annual recognition awards program to felicitate outstanding transportation professional and project, and a scholarship program to donate excess funds raised through our Annual Golf Tournament to the Student Scholarship Fund.

We organized six regular monthly meetings, three joint meetings with other professional transportation organizations (Intelligent Transportation Society of California, East Bay Traffic Engineers, and South Bay Transportation Officials Association), one technical workshop, and two special meetings. We continued to actively support student activities through awards/scholarships, discounts on meeting participation, donations to the Western District Student Endowment Fund (\$1,300), support for local student chapters, and financial support for students attending the 2015 District Annual Meeting and the 2015 Student Leadership Summit (SLS). Our Section donated about \$5,300 in student activities – about \$2,500 supporting annual operations of local student chapters and providing financial assistance for students attending the District Annual Meeting and the SLS, \$1,300 in donations to the Western District Student Endowment Fund, and \$1,500 in student scholarships.

Our social events included a ball game event and a joint happy hour with other professional transportation organizations. Our Annual Golf Tournament raised about \$700 for our Student Scholarship Fund.

The financial state of the section remained strong with a healthy balance of about \$32,655. It was another successful year for our section made possible with all the hard work and dedication from our amazing members and volunteers. We look forward to a great 2016!

Truly,

A handwritten signature in blue ink, appearing to read "Bhanu Kala", with a stylized flourish extending from the end.

Bhanu Kala

Treasurer – ITE San Francisco Bay Area Section

cc: Paul Stanis – President, Lin Zhang – Vice President, Frank Penry – Secretary

# Table of Contents

---

|  |    |
|--|----|
| 2015 Officers and Committee Chairs _____                       | 1  |
| Membership _____   | 3  |
| Financial Report _____   | 4  |
| Technical Activities _____                                     | 6  |
| Regular Technical Meetings _____                               | 6  |
| Joint Meetings _____   | 8  |
| Technical Workshop _____                                       | 9  |
| Special Meetings _____   | 10 |
| Student Activities _____                                       | 11 |
| Student Awards/Scholarships _____                              | 11 |
| Student Discounts _____  | 11 |
| Joint Meetings with Students _____                             | 12 |
| Donations to the Western District Student Endowment Fund _____ | 12 |
| Support for Students Attending Annual Meeting & SLS _____      | 12 |
| Local Student Chapters _____                                   | 13 |
| Legislative Activities _____                                   | 17 |
| Social Activities _____  | 19 |
| Oakland Athletics versus San Francisco Giants Game _____       | 19 |
| Joint Happy Hour _____   | 19 |
| Annual Golf Tournament _____                                   | 19 |
| Special Programs _____   | 21 |
| STEP Mentoring Program _____                                   | 21 |
| Annual Recognition Awards _____                                | 22 |
| Student Scholarship Fund _____                                 | 23 |
| Other Section Activities _____                                 | 24 |
| Newsletter _____   | 24 |
| Sponsorship Program _____                                      | 25 |
| Section Website _____  | 26 |
| 2015 Western District Annual Meeting _____                     | 26 |
| Affiliate Activities _____                                     | 28 |
| South Bay Transportation Officials Association _____           | 28 |

### 2015 OFFICERS AND COMMITTEE CHAIRS

Elections for the President, Vice President, Treasurer, and Secretary positions were held in May/June 2015. Paul Stanis, Lin Zhang, Bhanu Kala, and Frank Penry were all elected to these positions, respectively. Kimberly Leung assumed the role of the Immediate Past President. The elected officers and appointed committee chairs for the year 2015 are listed below.

#### 2015 ELECTED OFFICERS



*President*  
Paul Stanis



*Vice President*  
Lin Zhang



*Treasurer*  
Bhanu Kala



*Secretary*  
Frank Penry



*Immediate Past President*  
Kimberly Leung



## 2015 Officers and Committee Chairs

---

### 2015 COMMITTEE CHAIRS

| COMMITTEE CHAIR                                     | NAME             |
|---|------------------|
| Social Events Chair                                 | Ashley Brooks    |
| Membership Chair                                    | Smadar Boardman  |
| Legislative Chair                                   | Tony Henderson   |
| Awards Chair  | Amit Kothari     |
| Technical Programs Chair                            | Jia Hao Wu       |
| Golf Tournament Chair                               | Frank Penry      |
| Sponsorship Chair                                   | Ted Huynh        |
| Scribe  | Kamala Parks     |
| Chair of Past Presidents' Council                   | James Helmer     |
| Student Chapter Coordinator – South Bay             | Murali Ramanujam |
| Student Chapter Coordinator – East Bay              | Kimberly Leung   |
| Student Chapter Advisor – San Jose State University | Joy Bhattacharya |
| Student Chapter Advisor – U.C. Berkeley             | Michael Cassidy  |
| Student Outreach Chair                              | Kimberly Leung   |
| Website Administrator                               | Justin Walker    |

## MEMBERSHIP

A summary of the San Francisco (SF) Bay Area Section's membership and associated annual dues are shown in the table below. Membership for the section has dropped slightly, especially in the later part of 2015 – 572 members in 2014 and 508 members in 2015. Highlights about the section's membership include:

- Our section was jointly recognized at the 2015 Western District Annual Meeting with the Highest Membership Gain Award.
- In order to encourage the ITE International membership, regular technical meetings were discounted for our members.
- All of our section members are International Members as well, i.e., we have 100 percent international membership.
- We offered heavily discounted rates for students, unemployed, and retired members to encourage participation in our technical activities. Student membership accounted for about 12 percent in 2014 and 13 percent in 2015.
- Our Section has increased its effort to reach professional non-members and students through email and other targeted outreach efforts.



### SECTION MEMBERSHIP SUMMARY

| MEMBERSHIP TYPE      | MEMBERSHIP | PERCENT    | SECTION ANNUAL DUES |
|----------------------|------------|------------|---------------------|
| Honorary             | 2          | 0.4        | \$0                 |
| Fellow               | 69         | 13.6       | \$20                |
| Member               | 362        | 71.3       | \$20                |
| Students             | 66         | 13.0       | \$0                 |
| Institute Affiliates | 9          | 1.7        | \$20                |
| <b>Total</b>         | <b>508</b> | <b>100</b> |                     |

## FINANCIAL REPORT

|  |  |
|--|--|
| <b>Balance of Funds on 1/1/2015</b>                          |  |
| Checking Account   | \$26,257.09                                    |
| Student Scholarship Fund                                     | \$7,153.30                                     |
| <b>2015 Income</b>   |  |
| Membership Dues  | \$7,391.51                                     |
| Technical Activities   | \$9,536.16                                     |
| Investment Income  | -\$879.53                                      |
| Social Activities  | \$4,030.78                                     |
|  | <i>Golf Tournament</i>                         |
|  | \$3,263.90                                     |
|  | <i>Other Social Activities</i>                 |
|  | \$766.88                                       |
| <b>Total Income</b>  | <b>\$20,078.92</b>                             |
| <b>2015 Expenditure</b>                                      |  |
| Travel   | \$1,166.08                                     |
| Technical Activities   | \$8,683.47                                     |
| Awards   | \$272.74                                       |
| Students' Support  | \$5,257.50                                     |
|  | <i>Student Activities</i>                      |
|  | \$2,457.50                                     |
|  | <i>Scholarships</i>                            |
|  | \$1,500.00                                     |
|  | <i>Western District Student Endowment Fund</i> |
|  | \$1,300.00                                     |
| Social Activities  | \$4,088.21                                     |
|  | <i>Golf Tournament</i>                         |
|  | \$2,579.33                                     |
|  | <i>Other Social Activities</i>                 |
|  | \$1,508.88                                     |
| Maintenance Fees (website, e-communication, elections, etc.) | \$963.03                                       |
| Miscellaneous (certificates, name tags, postage, etc.)       | \$402.80                                       |
| <b>Total Expenditures</b>                                    | <b>\$20,833.83</b>                             |
| <b>Balance of Funds on 12/31/2015</b>                        |  |
| Checking Account   | \$26,197.14                                    |
| Student Scholarship Fund                                     | \$6,458.34                                     |
| <b>Net Revenue for 2015</b>                                  | <b>-\$754.91</b>                               |

Does your section have a Federal Employer Identification Number?

☐ Yes ☒ No

If yes, what is the number? \_\_\_\_\_

Was there a change in the Section Bylaws during this reporting period? (If yes, please attach a copy of the new bylaws.)

☐ Yes ☒ No

The section incurred a net loss of about \$755, the majority of which is associated with the decrease in the Student Scholarship Fund's balance, which is primarily due to the loss of investment income related to the scholarship fund (about \$880). Despite the financial loss, the Section's finances remained in a strong position – we had an overall balance of about \$32,655 by the end of 2015 (about \$26,197 in the Section's checking account and \$6,458 in the Student Scholarship Fund). The biggest income sources include meetings (\$9,536.16), membership dues (\$7,391.15), and the golf tournament (\$3,263.90).

Overall, in 2015, the SF Bay Area Section **spent about \$5,258 in support of students** – about \$2,458 supporting annual operations of local student chapters and providing financial assistance to students attending the Western District Annual Meeting and the Student Leadership Summit, \$1,300 in donations to the Western District Student Endowment Fund, and \$1,500 in student scholarships.

### TECHNICAL ACTIVITIES

A summary of the technical activities conducted by the SF Bay Area Section during year 2015 is provided in the table below.

#### 2015 TECHNICAL ACTIVITIES SUMMARY

| MEETING TYPE              | NUMBER OF MEETINGS HELD |
|---------------------------|-------------------------|
| Regular Technical Meeting | 6                       |
| Joint Meeting             | 3                       |
| Technical Workshop        | 1                       |
| Special Meeting           | 2                       |
| <b>Total</b>              | <b>12</b>               |

#### REGULAR TECHNICAL MEETINGS

Every year, the SF Bay Area Section organizes regular technical meetings to conduct the section's business and provide informative technical sessions to the section members and other interested transportation professionals in the SF Bay Area. These meetings are usually held once a month during lunch times. These technical meetings are based on current hot topics in the transportation field at the local, regional, and national level.

During 2015, our section held six regular technical meetings. Brief summaries of these meetings are provided below, while detailed meeting flyers are included in Appendix A.



### 2015 REGULAR TECHNICAL MEETINGS

#### JANUARY 22 ITE ANNUAL AWARDS & BRING A COLLEAGUE MONTH

*Presenters:* Mike Sallaberry, San Francisco Municipal Transportation Agency (SFMTA)  
(Project of the Year Winner – Cesar Chavez Streetscape Project, San Francisco)

*Location:* Metropolitan Transportation Commission (MTC), Oakland *Attendance:* 43

#### FEBRUARY 19 CONNECTIVITY AND MOBILITY

*Presenters:* Sandra Lennie, Iteris | Heath Maddox, SFMTA | Jason Weinstein, MTC

*Location:* Jillian's, San Francisco *Attendance:* 33

#### MARCH 19 BIG DATA AND VISUALIZATION

*Presenters:* Matt Goyne, Fehr and Peers | Dan Howard, SFMTA | Beaudry Kock, RideScout

*Location:* Ozumo, Oakland *Attendance:* 35

#### JUNE 18 BAY AREA TRANSIT UPDATES

*Presenters:* Michael Gougherty, Water Emergency Transportation Agency | David Wilkins, AC Transit | Matt Stevens, SMART

*Location:* Ozumo, Oakland *Attendance:* 34

#### SEPTEMBER 17 BAY AREA TRAFFIC – HOW GOOD (OR BAD) IS IT?

*Presenters:* Cathy Leong, ITE Western District | Dave Vautin, Kristen Carnarius, and Winnie Chung, MTC

*Location:* Ozumo, Oakland *Attendance:* 50

#### OCTOBER 15 BAY AREA RAPID TRANSIT

*Presenters:* Paul Medved and Aaron Weinstein, BART | Hans Larsen, City of Fremont

*Location:* Jillan's, San Francisco *Attendance:* 34

### JOINT MEETINGS

Over the years, to improve coordination with other transportation groups/associations in the SF Bay Area, our section has been hosting joint meetings with them. We continued this tradition in 2015 and held three joint meetings, one with the Intelligent Transportation Society of California (ITS California), one with the South Bay Transportation Officials' Association (SBTOA), and one with the East Bay Traffic Engineers (EBTE). Brief summaries of these joint meetings are provided below, while detailed meeting flyers are included in Appendix A.



### 2015 JOINT MEETINGS

**APRIL 16**

**AUTONOMOUS VEHICLES AND INTELLIGENT TRANSPORTATION SYSTEMS**

*Joint Meeting With:* ITS California

*Presenters:* Melissa Ruhl, San Jose State University | Virginia Lingham, MTC | Jim Misener, Qualcomm

*Location:* Caltrans District 4, Oakland

*Attendance:* 57

**MAY 14**

**SAN BRUNO GRADE SEPARATION PROJECT**

*Joint Meeting With:* SBTOA

*Presenters:* Rafael Bolon, SamTrans

*Location:* Donato Enoteca Restaurant, Redwood City

*Attendance:* 40

**NOVEMBER 19**

**ARTERIAL PROGRAMS IN BAY AREA**

*Joint Meeting With:* EBTE

*Presenters:* David Man, Caltrans | Linda Lee, MTC | Saravana Suthanthira, Alameda County Transportation Commission

*Location:* Ozumo, Oakland

*Attendance:* 57



### TECHNICAL WORKSHOP



On April 29, 2015, the SF Bay Area Section's seventh annual modeling workshop titled **"Modeling for Sustainable Complete Streets/Multimodal Transportation Planning"** was organized successfully<sup>1</sup>. The objectives of this workshop were to show what innovative transportation modeling tools are available to our engineers and planners in the transportation modeling industry, and how these tools can be applied to transportation planning/engineering projects. Speakers at the workshop included representatives from the international transportation modeling software development firms (PTV America,

Citilabs, Econolite, Transport Simulation Systems/TSS, and INRO), the University of California at Davis, the Santa Clara Valley Transportation Authority, and others who talked about the current modeling development status, meso-scopic modeling, land use models linked to the transportation models, traffic control systems and the traffic data collection technologies. There were more than 70 participants at the workshop with three sponsors including TSS, PTV America, and Citilabs. A detailed workshop flyer is included in Appendix A.



---

<sup>1</sup> More information about the technical program is available at <http://www.sfbayite.org/eventsprograms/technical-programs>.



### SPECIAL MEETINGS

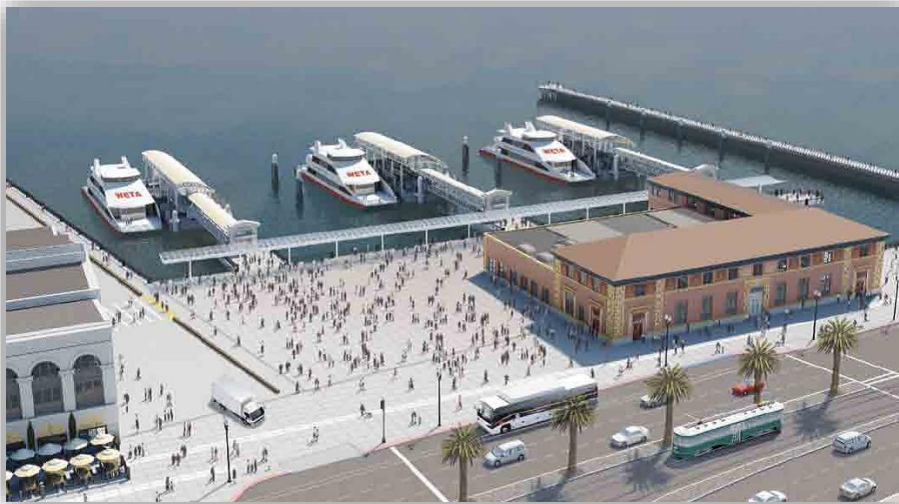
Our section conducted two special meetings in 2015 – these include technical tours to the Bay Area Rapid Transit (BART) Operations Control Center and the San Francisco Ferry Terminal Building Expansion Project.

#### BART Operations Control Center Technical Tour

On January 31, 2015, the SF Bay Area Section participated in a technical tour of the BART Operations Control Center. BART, which just celebrated its 40<sup>th</sup> anniversary, is a 104-mile systems that performs supervisory control of train operations and remote control of electrification, ventilation, and emergency response systems. The tour was a success and had a maximum capacity of 20 people. In the technical tour, the participating group was able to observe and understand the working of the operations center at close quarters and was enlightened about how BART Operations has changed over time due to various line expansions, natural disasters, and the potential of attacks.



#### San Francisco Ferry Terminal Building Expansion Project Technical Tour



On May 1, 2015, our section participated in a technical tour of the San Francisco Ferry Terminal Expansion Project in San Francisco, California. The tour included a session on the history of the terminal buildings, the planned terminal expansion, and a ferry ride to view the proposed expansion project from the bay looking into the ferry buildings!

# STUDENT ACTIVITIES

The SF Bay Area Section conducts, encourages, and supports a lot of student activities via:

- Student awards/scholarships
- Student discounts
- Joint meetings with students
- Donations to the Western District Student Endowment Fund
- Support for students attending the Annual Meeting and the Student Leadership Summit (SLS)
- Support for local student chapters

## STUDENT AWARDS/SCHOLARSHIPS

The SF Bay Area Section bestows student awards/scholarships by conducting an annual Student Paper Competition with the three topics for the paper announced before the end of the calendar year and with submissions due by mid-February. Winners are notified by mid-March, and the Grand Prize Winner is invited to speak at the April lunch meeting. The grand prize winner receives a \$1500 scholarship award, and there are two other scholarships for an undergraduate and graduate recipient, each of whom receive \$750 in scholarship money.

In 2015, the three topics for the paper competition were Automated and Connected vehicles, NACTO Design Guidelines, and Automated Data Collection. The papers were reviewed by the Student Outreach Chair and two other board members of the section. **The grand prize winner for 2015 was Melissa Ruhl of San Jose State University** with the paper titled "How It Rolls Out: The Impact of Automotive Automation on the Future of Personal Transportation." The two additional scholarships were not awarded in 2015.

## STUDENT DISCOUNTS

Huge student discounts, almost 67 percent, were offered by our section to students to encourage their participation at every meeting. Usually, student rate varied between \$5 and \$10, while regular member

### Institute of Transportation Engineers SF Bay Area Section 2015 Student Paper Award Contest

Students can choose one of these topics:

1. Automated and Connected Vehicles
2. NACTO Design Guidelines
3. Automated Data Collection

**PAPERS DUE FEBRUARY 13, 2015 @ 5:00 PM**

**ELIGIBILITY**

- A student member of ITE during the school year 2014-2015.
- Full-time student enrolled in Engineering/Planning Curriculum.

**PAPER FORMAT**

- Paper must be original work, not previously written for any other purposes.
- Must be written in the English language.

**PAPER SUBMITTAL**

- All entries must include your name, address, email, telephone number, college/university, major, number of units currently enrolled, and ITE membership number. If you're not an ITE student member you can join for free at [www.ite.org/membership](http://www.ite.org/membership)
- Submittals must include all supporting materials, if appropriate, and can be electronic (PDF and WORD format) or hard copy (4 copies). Only one paper per student can be submitted.
- The winning papers will be chosen on or before March 13, 2015. The entries will be judged based on content, clarity, style, and creativity. The Grand Prize Winner MUST attend and present the "Winning Paper" at the April 16, 2015 SF Bay Area Section Lunch Meeting.
- All student paper entrants will receive a free lunch at the April 2015 ITE San Francisco Bay Area Section Meeting

Hard copy entries should be mailed to:  
Student Paper 2015  
c/o SFMTA – Kimberly Leung  
One South Van Ness Avenue, 7th Floor  
San Francisco, CA 94103

This year, students will have a choice from one of three topics:

Google recently unveiled the first complete prototype of its self-driving vehicle. How will autonomous and connected vehicles change the nature of personal transportation? What are some of the challenges with incorporating these vehicles onto existing public roads?

Caltrans has recently officially endorsed the NACTO Urban Street Design Guide and Urban Bikeway Design Guide. What does this mean for the future of bicycle and pedestrian mobility on the state highway system? Should local cities and counties follow suit?

Advancements in data collection have allowed for automated data collection from personal devices. How can this be used when planning for the future of multimodal transportation facilities?

**GRAND PRIZE: \$1,500 Scholarship Award**

Plus two additional scholarships:

**\$750 Undergraduate Student Paper Scholarship Award\***

**\$750 Graduate Student Paper Scholarship Award\***

\*\$750 Undergraduate or Graduate Student Paper Scholarship Award may not be awarded if not enough undergraduate or graduate students submit papers.

Electronic entries should be emailed to:  
[kimberly.leung@sfmta.com](mailto:kimberly.leung@sfmta.com)  
Subject Heading: ITE Student Paper 2015

OR

ite

rate varied between \$25 and \$30. Additionally, to promote student membership, annual section dues were waived for all student members.

### JOINT MEETINGS WITH STUDENTS

Even though our section did not conduct a joint meeting with a local student chapter per se, we encouraged student participation at every technical meeting by heavily discounting all our meetings for students. Additionally, to increase student attendance at our regular meetings, our section conducted at least three regular monthly meetings in Oakland, which is in close proximity of the University of California at Berkeley ITE (Cal ITE) Student Chapter.

### DONATIONS TO THE WESTERN DISTRICT STUDENT ENDOWMENT FUND

In 2015, the SF Bay Area Section donated a total of \$1,300 to the Western District's Student Endowment Fund. A donation of \$500 was made in February 2015, while a donation of \$800 was made in September 2015. Also, our section is currently conducting a Student Endowment Fund Challenge to collect additional donations from our section members for the student fund.



### SUPPORT FOR STUDENTS ATTENDING ANNUAL MEETING & SLS

Our section provided financial assistance to students attending the 2015 Western District Annual Meeting in Las Vegas and the 2015 SLS in Sacramento. The following assistance was provided to the Cal ITE Student Chapter and the San Jose State University (SJSU) ITE Student Chapter members:

#### 2015 SLS

- \$50 per student for up to three students per student chapter

#### 2015 Western District Annual Meeting

- \$300 per student for up to four students per student chapter



## Student Activities



In 2015, three students each from the Cal ITE and SJSU ITE student chapters attended the SLS, while four students from the Cal ITE student chapter attended the Western District Annual Meeting. Overall, \$1,500 were awarded to students in 2015 for attending the Western District Annual Meeting and the SLS.

Typically, students are encouraged to submit a one-

page meeting experience to receive the section funds. The meeting summaries of the students who attended the 2015 Western District Annual Meeting and the 2015 SLS are included in Appendix B.

### LOCAL STUDENT CHAPTERS

Our section financially assists local student chapters, Cal ITE and SJSU ITE student chapters to organize their regular meetings. In 2015, up to a maximum of \$1,000 was awarded to each student chapter for their annual on-campus activities and operations. Operations of the local student chapters in 2015 are summarized below.

#### Cal ITE Student Chapter

**Spring 2015** – During the Spring 2015 semester, Cal ITE hosted two general meetings and two technical tours, which included the Caltrans Traffic Management Center in Oakland and the BART Oakland Airport Connector project. Their general meetings were as follows:



- March 17: General Meeting with Kimberly Leung, SFMTA
- April 28: General Meeting with Kevin Fehon, DKS Associates

**2015 Western District Annual Meeting** – Four students from University of California at Berkeley attended the 2015 ITE Western District Annual Meeting in Las Vegas. The Cal ITE student chapter had not attended an annual meeting since 2012. More about the students' thoughts on the annual meeting are provided in Appendix B.

**Fall 2015** – During the Fall 2015 semester, Cal ITE hosted three general meetings and two technical tours, which included a bike tour in San Francisco and a tour of the airfield and control tower at San Francisco International Airport. Their general meetings were as follows:

- September 8: General Meeting with Zaki Mustafa, Los Angeles Department of Transportation
- October 12: General Meeting with Leigh Fisher
- November 17: General Meeting with Fehr and Peers

The Cal ITE student chapter has also been coordinating with staff from Arup to set up an AutoCAD workshop.



### SJSU ITE Student Chapter

The SJSU ITE Student Chapter's main activity are the Lunch & Learn sessions, in which they invite professionals in the transportation field to speak about projects their organization is working on or about various subjects of interest to the chapter during the lunch hour at SJSU. Since they are a commuter school, this allows for maximum student participation and provides for a more effective outreach to the students. Lunch is provided by reimbursement through the support of the SF Bay Area ITE Section. Interested non-ITE student members are also allowed to attend these sessions to better expose them to the transportation field as well as to inform them of the chapter activities and how they can be involved. It is a great opportunity for students to interact with industry professionals and learn more about local projects and transportation opportunities. During these presentations, food is offered to their members, giving the name, Lunch & Learn. On top of the Lunch & Learn sessions, they also organize tours/field trips to a company or a site. Outside of their regular chapter events, some of their members participate in the SF Bay Area Section and Western District meetings.

The following activities were organized by the SJSU ITE Student Chapter in 2015:

#### Lunch & Learn Sessions

- September 10: Fall Kick-Off Meeting – The first meeting of the semester was started with an ice breaker activity and a brief introduction to ITE and the transportation field. The chapter president

highlighted the benefits of joining ITE – easier access to information about internships, companies, and projects; access to construction/work sites, and a great professional network of students. Afterwards, Murali, the student chapter liaison, began to give a general overview of the transportation field. Among his points were that transportation is a growing field and many future planners and engineers are needed. Murali also explained some changes happening in the field: transit's growing importance due to environmental concerns, and a change in mindset to complete streets, streets that accommodate for all types of transport. Afterwards, interested students signed up to become members and began their participation in the SJSU ITE Student Chapter.

- September 17: Meeting with Kimley Horn & Associates – In this Lunch & Learn session, a representative from Kimley



Horn & Associates introduced his company to the members. The representative then discussed about a few projects the company is currently involved in. In the East Bay, they are preparing the environmental report for AC Transit East Bay BRT. In Arlington, Virginia, they are conducting a multimodal transportation study, which includes preparing the environmental documents

and holding public meetings. In Austin, Texas, they are gathering feedback from citizens in a Strategic Mobility program.

- October 13: Complete Streets – Eugene, a transportation planner from Santa Clara Valley Transportation Authority, presented on complete streets. He emphasized the importance in realizing one key fact: our ultimate goal in transportation is to transport people. After all, it is people who are driving the cars, and if these people can switch to using transit, walking, or biking, our road space would be better utilized. This brings in the idea of complete streets: to provide accommodations for all types of transport so people have a choice to use other forms of transportation that do not take as much road space per person as a car. Since our chapter is mostly comprised of engineers, Eugene also mentioned some engineering applications to complete streets. He named five elements to consider: demographics, demand, technology, connectivity, and maintenance. Demographics considers who would be using the roads, and possible special arrangements, if required. Demand considers both current and future demand, and what may be the best option to consider for long-term. Technology mainly considers detection systems and coordinating traffic lights, which may need altering if the road is heavily used by bikes, for example. Connectivity refers to looking at overall traffic patterns. Finally, maintenance refers to reducing the future costs so the scarce money can be diverted elsewhere.



- November 12: Planning for Self-Driving Cars – Peter Chen, a Senior Transportation Planner for the Santa Clara Valley Transportation Authority was the guest speaker for this Lunch & Learn session. Peter emphasized on what a semi-autonomous vehicle would look like and the benefits this concept can bring to the transportation field. He talked about current vehicle models with autonomous parking features. He mentioned that Mercedes and Google already have autonomous vehicles on the road allowing employees to use their product to test out the services. Other key points the guest speaker talked about were the efficiency of an autonomous car and how it can increase the road usage; therefore, not having to change the infrastructure of a roadway or design. Another key point Peter mentioned was the “implementation of self-driving cars depends on customer confidence, interoperability, and vehicle-ready roads,” which will facilitate a smoother transition from manual operated vehicles to an autonomous self-driving one. Peter closed his presentation by introducing the five levels of vehicle automation. For example, Level 1 is some vehicle automation features in current vehicles while Level 5 is 100 percent self-driving car.

### Organization Fair

To help introduce student organizations to new students, SJSU hosted a general organization fair. Each registered organization was assigned a placeholder. At the ITE table, flyers (about what ITE is, our first lunch and learns and meeting, and contact information), a form to register for the mailing list, as well as the officers themselves were present to answer questions of any interested attendee.

### South Bay Transportation Officials Association (SBTOA) Meetings

Some of the student members attended the SBTOA meetings and took the opportunity to mix with the local transportation professionals whilst learning about relevant projects that impact our lives.

### SLS

This student-focused event, hosted by the Sacramento State University, was well-attended by over a hundred student members from schools throughout the ITE Western District, as well as by many professional members, including John Kennedy, current International ITE president, and Carlos Ortiz, current ITE Western District president. The three-day event had students listen to professional speakers from the transportation industry, practice answering interview questions through “speed interviews,” and perform a mock public service announcement about transforming a downtown street to be more inclusive of different modes of travel. Four students from the SJSU ITE Student chapter attended this summit. Students’ experience and thought about the SLS are included in Appendix B.



### LEGISLATIVE ACTIVITIES

Our section's Legislative Chair, Tony Henderson regularly monitors and updates our members about legislative activities in and around the area. In 2015, the Legislative and Resources webpages of the section's website<sup>2</sup> were updated to provide the membership with easy access to legislative news in California and the Bay Area. In addition to statewide legislative news reported in the Western District's "Legislation around the District", the section's Legislative and Resources webpages focus on local policies and regulations that impact transportation. The Resources webpage provides the membership with easy access to a wide array of local, regional, and national websites as well as ITE resources. The major legislative news in 2015 included the following.

#### California SB 743: Modification to CEQA Transportation Impact Standards

In 2013, Governor Brown signed SB 743, starting a process to change how transportation impacts are analyzed in California. The Governor's Office of Planning and Research (OPR) was tasked with preparing rules that would eliminate Level of Services (LOS) as the metric used for California Environmental Quality Act (CEQA) analysis, and replace it with a model that employs vehicle miles traveled (VMT). Draft proposed CEQA Guidelines were originally released in 2014 and revised based on comments received. Throughout 2015 OPR revised the draft guidelines, with plans to release the final proposed guidelines in 2016.



#### California SB 508: Transportation funds: Transit Operators - Pedestrian Safety

Approved by the Legislator and signed by the Governor, SB 508 modifies the way transit farebox recovery requirements are established to be eligible for certain State funding. The bill also added pedestrian safety education programs to the list of uses eligible for Local Transportation Fund (LTF) revenue).

---

<sup>2</sup> <http://www.sfbayite.org/resources>



### California SB 9: Greenhouse Gas Reduction Fund: Transit and Intercity Rail Capital Program

Modifies the rules related to allocation of money collected through Greenhouse Gas Reduction Fund (GGRF), commonly referred to as Cap-and-Trade, that are spent on transit projects. The bill requires that funds must be spent on “transformative” projects, which is defined as “rail, bus or ferry transit projects that will significantly reduce vehicle miles traveled, congestion and greenhouse gas emissions”, and may not be used for transit operations.



#### Greenhouse Gas Reduction Fund: Transit and Intercity Rail Capital Program.

|                        |                            |
|------------------------|----------------------------|
| Author                 | <a href="#">Beall, Jim</a> |
| Session Year           | 2015-2016                  |
| House                  | Senate                     |
| Current Status         | Approved by the Governor.  |
| Latest Amended Version | 10-09-2015                 |

Looking ahead towards 2016, planning was started to host a workshop presenting the forthcoming implementation of SB 743, the State law that will replace Level of Service with Vehicle Miles Traveled for impact analysis in California. The intent of this workshop is to provide the membership with critical information they need to know about upcoming changes in how transportation impacts are analyzed in California.

### SOCIAL ACTIVITIES

Our section organized three social activities in 2015. Their details are provided below.

#### OAKLAND ATHELETICS VERSUS SAN FRANCISCO GIANTS GAME

Members of ITE enjoyed a night at the O.Co Coliseum, Oakland in September 2015 where 50 attendees watched the A's versus the Giants ball game. This was our fourth annual baseball outing and has officially become an annual event. In 2015, the attendance increased from 40 to 50 ITE members and guests from the previous year. Our section is scheduling another ball game social event (A's versus the Ray's at O.Co Coliseum in Oakland) in July 2016.

#### JOINT HAPPY HOUR



The SF Bay Area ITE section hosted a joint happy hour with four other transportation organizations located in the San Francisco Bay Area – Young Professionals in Transportation (YPT), Women's Transportation Seminar (WTS), American Pedestrian and Bicycle Professionals (APBP), and American Planning Association (APA). This annual event has been such a large success in the Bay Area that we increased the number of organizations invited to this event from four to five in 2015, including the newly organized APBP. This event took place on April 15<sup>th</sup> and had over 120 people in attendance! Since this event was a huge success, we plan to host it again in 2016.

#### ANNUAL GOLF TOURNAMENT

Twenty four golfers from a variety of SF Bay Area transportation organizations teed off on Friday, June 12 for the SF Bay Area ITE Annual Golf Tournament. The 2015 tournament was held on the scenic hillside course of the Tilden Park Golf Course in Berkeley, and was a fun and social gathering for those in attendance. This was the third year that the SF Bay Area ITE Section held this golf tournament, and the attendance held steady. With sponsorship from five firms/companies, nearly \$700 was raised to benefit the section's Student Scholarship Fund. This year Silver and



Gold Event Sponsorship Levels were offered, with Quality Counts participating at the Silver Level. Other sponsors included Counts Unlimited, GHD, and Stantec. Nearly \$450 of prizes were awarded for champion, on-course, and raffle prizes. Special thanks to Kimberly Leung, current Section President for her effort, providing photography and hospitality. Team Fehr & Peers won the Champion tournament prize. Shawn O'Keefe won the longest drive competition and Mark Epperson won the closest-to-the-pin contest. The golf tournament flyer is included in Appendix A.

### SPECIAL PROGRAMS

In addition to the technical, student, and social activities discussed above, our section conducts special programs and takes pride in going an extra yard to cater to the local transportation community. These special programs include the following.

#### STEP MENTORING PROGRAM

The Students in Transportation Engineering and Planning (STEP) Mentoring Program had been idle for a few years due to lack of interest from both professionals and students. However, in Spring 2015, students from both the University of California at Berkeley and SJSU expressed an interest in a mentorship program, thus the program was revived in Fall 2015.

The STEP Mentoring Program is a one-on-one program dedicated to building long-term relationships while furthering personal growth and career development. The mentee is a college student who is paired with a mentor from which to learn and receive guidance. The mentor is a junior or senior professional who has experience in the area that the mentee is interested in developing and is willing to steward the growth of the mentee.



#### Program Overview

The STEP Mentoring Program is a one year commitment between the mentor and mentee. The timeline for the 2015-2016 program is as follows:

- Applications – October 15, 2015  
Applications from interested mentors and mentees were due by October 15, 2015. The applications that mentors and mentees were asked to fill out are included in Appendix C.
- Selection – Late October  
Tentative matches between mentor and mentee candidates were made based on the mentee's preferences and needs in late October. Mentor and mentee candidates had the opportunity to interview each other before final matches were made in early November.
- Six-Month and One-Year Evaluation Form  
Mentor and mentee pairs will be asked to complete a six-month and one-year evaluation to discuss the program and provide feedback on the STEP Mentoring Program.

Our section successfully matched eight mentor-mentee pairs this year. We have four students from the University of California at Berkeley, three from SJSU, and one recent graduate from Cal Poly, San Luis

Obispo. The program is free-flowing, so each pair was asked to put together a mentoring contract to determine their goals and logistics for meeting for this year. A sample mentoring contract that each pair was asked to prepare and sign is included in Appendix C. In future years, this program could provide more structured events for pairs to meet, such as happy hours, bowling nights, etc., but this year, the goal was just to help match up students with professionals in the industry.

### ANNUAL RECOGNITION AWARDS

Year 2015 was the tenth year of the Annual Recognition Awards Program. This program was initiated in 2006 and recognizes excellence in transportation in two categories – Transportation Professional of the Year and Transportation Project of the Year. Transportation professionals and projects from the 15-county greater San Francisco Bay Area are eligible to participate in this program. Amit Kothari, section's Annual Recognition Awards Chair oversees this program.

#### 2015 Transportation Professional of the Year

The purpose of this award is to recognize an ITE member who contributed significantly to the transportation field over the last several years. During the review of nominations and ranking process, the Review Panel considers the nominee's expertise in the transportation field, involvement with ITE activities, contributions to transportation profession, training/mentoring students and young professionals, etc.



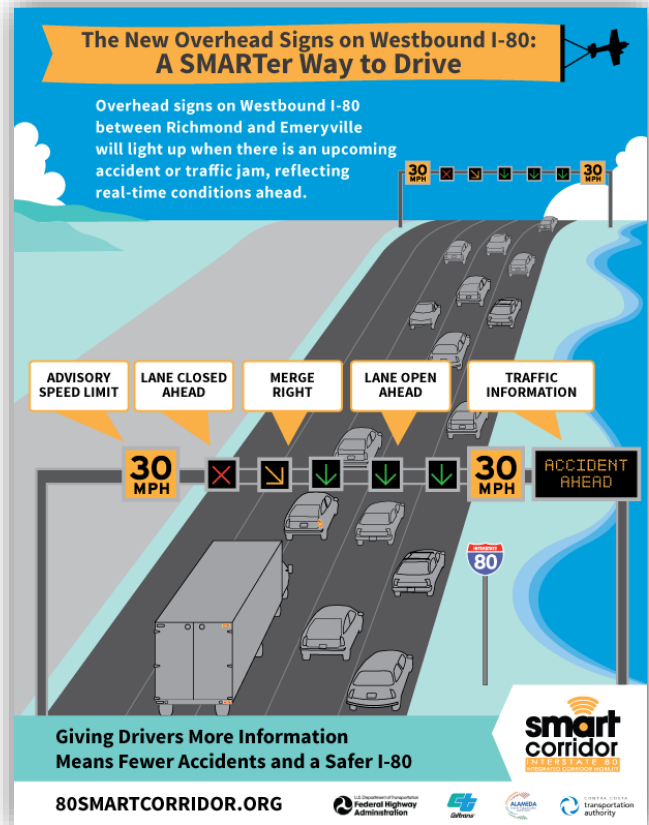
This year, three outstanding professionals were nominated for this award – Randy Durrenberger (Kimley Horn), Wing Lok (Caltrans) and Rafat Raie (City of Walnut Creek). ***Mr. Rafat Raie was the recipient of the award for 2015.*** He was recognized for his remarkable contributions towards promoting innovation in traffic operations, contributions to numerous regional transportation projects, continued ITE involvement as well as decades of training and mentoring of young and mid-career transportation professionals. At the January 2016 luncheon meeting, Rafat's daughter accepted the award on his behalf as Rafat had committed to teaching a course in Fresno.

#### 2015 Transportation Project of the Year

The purpose of this award is to recognize innovation and/or creative-thinking in the field of transportation. While reviewing the nominations in this category, the Review Panel is looking for a project that may have implemented groundbreaking ideas, developed new services/processes or implemented innovative design or planning. The panel ranks the projects based on innovation, unusual circumstances, unique challenges, cost effectiveness and public acceptance.

*This year's award recipient was Interstate 80 SMART Corridor – Integrated Corridor Mobility (ICM) Project* in Alameda and Contra Costa counties. This project involved deployment of advanced technology that will reduce secondary accidents, improve travel time reliability and allow integrated operations of I-80 freeway, ramps and arterials. The project elements included 44 ramp meters, 67 variable speed advisory signs, 40 trailblazer signs and nine traffic management centers. The project also required extensive coordination among two counties, Caltrans, nine cities, MTC, CHP and over a dozen consultants.

Randy Durrenberger with Kimley Horn presented this project at the January 2016 Section Meeting and accepted the award. Other projects nominated for the award included Fell and Oak Streetscape and Green Infrastructure Improvements, and Interstate 280 Southern Viaduct Hinge Replacement, both in San Francisco.



### STUDENT SCHOLARSHIP FUND

As part of the Student Scholarship Fund program, every year our section donates the excess funds raised by the Annual Golf Tournament to the Student Scholarship Fund. These funds are used to bestow scholarships and awards to transportation engineering and planning students in the Bay Area. Our section donated \$1,000 in 2014 and about \$700 in 2015.



## OTHER SECTION ACTIVITIES

### NEWSLETTER

Our section publishes weekly e-newsletters to keep section members informed about current and upcoming activities and issues of interest. Typical e-newsletter includes details about our section's, Western District's and national ITE events; training opportunities; awards programs; student activities; job announcements, elections' updates. Our section's Secretary, Frank Penry serves as the editor for our newsletters and distributes them electronically not only to the section members, but also to other interested transportation professionals in the Bay Area. Because of their wide circulation database, these newsletters are very popular with local employers too for employment opportunity announcement purposes. We are proud to mention that we offer this as a free service to local relevant employers.



**2015 - 2016 ITE SAN FRANCISCO BAY AREA SECTION**

President: Paul Stanis | [stanis@sfbayite.org](mailto:stanis@sfbayite.org)  
 Vice President: Lin Zhang | [lzhang@sfbayite.org](mailto:lzhang@sfbayite.org)  
 Treasurer: Bhana Kala | [bhana.kala@sfbayite.org](mailto:bhana.kala@sfbayite.org)  
 Secretary: Frank Penry | [fperry@sfbayite.org](mailto:fperry@sfbayite.org)  
 Immediate Past President: Kimberly L. Leung | [kall@sfbayite.org](mailto:kall@sfbayite.org)  
 Web Administrator/Job Listing: Justin Waller | [wall@sfbayite.org](mailto:wall@sfbayite.org)

---

### October Announcements

- October 15th: ITE SF Bay Area Section October Lunch Meeting - Bay Area Rapid Transit (BART) - An Update
- STEP Mentor Program
- 2015 Annual Recognition Awards Announcement
- Job Announcements

---

### ITE SF Bay Area Section October Lunch Meeting

RSVP/Cancellation Deadline: Monday, October 12th at 12 PM (noon)



San Francisco Bay Area Section  
October 2015 Lunch Meeting

#### Bay Area Rapid Transit (BART) – An Update

October 15 | 11:30 AM – 1:30 PM | Jillian's, SAN FRANCISCO

Join the SF Bay Area Section of the Institute of Transportation Engineers (ITE) for October's lunch meeting focused on BART Warm Springs Extension, City of Fremont's preparation for the new station, and BART planned new train cars.

**Speakers**

**Paul Medved**, BART, "BART Warm Springs Extension – Project Update"

**Hans Larsen**, City of Fremont, "Fremont's Hot Plans for Warm Springs"

**Aaron Weinstein**, BART, "BART Fleet of the Future - Design and Public Outreach"



**Registration Details**  
 Register and prepay online at the meeting registration webpage provided below. RSVP by October 9th (Friday) to enter into a drawing for a \$25 gift card. Walk-ins will be charged \$10 extra.

**RSVP/Cancellation Deadline**  
 October 12<sup>th</sup> (Monday) at noon. Seating capacity is limited to 60.

[LEARN MORE & REGISTER](#)



## MENTOR PROGRAM

Students in Transportation Engineering & Planning – ITE SF Bay Area Section

**Students in Transportation Engineering & Planning (STEP) Mentoring Program** is a one-on-one program dedicated to building long-term relationships furthering personal growth and career development. The mentee is a college student who is paired with a mentor from which to learn and receive guidance. The mentor is a junior or senior professional who has experience in the area that the mentee is interested in developing and is willing to steward the growth of the mentee.

To become a mentor or mentee, please fill out an application (below) by October 15, 2015. For information, please contact Kimberly Leung at [Kimberly.Leung@sfmta.com](mailto:Kimberly.Leung@sfmta.com)

#### STEP Mentoring Program Overview

The STEP Mentoring Program is a one year commitment between the mentor and mentee. The timeline for the 2015-2016 program is as follows:

**Applications - October 15, 2015**  
 Applications from interested mentors and mentees are due by October 15, 2015.

**Selection - Late October**  
 Tentative matches between mentor and mentee candidates will be made based on the mentee's preferences and needs in late October. Mentor and mentee candidates will have the opportunity to interview each other before final matches are made in early November.

**Six-Month and One-Year Evaluation Form**  
 Mentor and mentee pairs will be asked to complete a six-month and one-year evaluation to discuss the program and provide feedback on the STEP Mentoring Program.

**ITE Student Membership**  
 Students can join ITE as a Student Member, and ITE will waive dues for the first full year of membership!

[Join Online](#)  
[PDF Application](#)

Have you graduated recently? Click [here](#) to transfer to a Professional Member at a discount.

[Program Overview](#) (Word document)

**Applications**  
[STEP Mentee Application](#) (PDF)  
[STEP Mentor Application](#) (PDF)



### 2015 Annual Recognition Awards Announcement

#### 2015 Annual Recognition Awards

San Francisco Bay Area Section

Dear SF Bay ITE Member:

The nomination period for the Annual Recognition Awards is now open! It is time to celebrate successful projects from the past year and to recognize someone who is an outstanding transportation professional. Here is your opportunity to nominate an outstanding ITE member who has contributed greatly to the regional transportation or someone who played a significant role on a high-profile transportation project, served as a mentor to students and/or professionals, or contributed greatly to the ITE SF Bay Area activities. Here is your chance to show your appreciation by nominating him/her for the ITE SF Bay Area Professional of the Year Award!

Are you aware of an outstanding transportation project in our region? You may nominate that project for the Project of the Year award.

Send an email to [AmitOneKothari@gmail.com](mailto:AmitOneKothari@gmail.com) with "2015 Nomination" in the subject line, and the name and contact information of the person or the project you are nominating **by Monday, November 2, 2015**. Additional information on the Annual Recognition Awards Program is provided below.

e-mail your nominations to: Amit Kothari, PE, (Annual Recognition Awards Chair, SFBay ITE)  
 e-mail: [AmitOneKothari@gmail.com](mailto:AmitOneKothari@gmail.com)

[LEARN MORE](#)

---

### Job Announcements

## ARUP

Various Positions Open

Bring Your Vision to shape a better world

At Arup, our innovative spirit compels us to express our ingenuity in unique ways - developing many of the world's most innovative and sustainable buildings, transport and civil engineering projects. Arup is a global engineering and consulting firm of 12,000 creative minds. Our integrated approach to engineering and design brings together the best professionals to meet our clients' needs.

Arup's San Francisco Planning team undertakes unique and challenging projects. We seek individuals with the technical expertise, experience and motivation to deliver innovative solutions. This is an excellent opportunity for qualified applicants to be involved in challenging projects and tasks. The hired candidate will join a multidisciplinary team of Planners and Engineers.

### **SPONSORSHIP PROGRAM**

The sponsorship program was introduced by our section during the 2009-2010 fiscal year. The objective of this program is attract companies in the transportation field who would be interested in financially supporting our section via sponsorship of monthly lunch meetings; in turn sponsors are allowed to present a short talk about their firm and/or provide marketing materials to attendees. The sponsorship program also includes the annual modeling workshop organized by the section. The money raised through the sponsorship program is used to pay a part of the out-of-pocket costs collected from the monthly meeting and annual workshop attendees. This reduces the attendee's cost-of-attendance as well as the section's cost to organize these events (overhead and rental space), which in turn encourages continued attendance from the members, non-member guests, and students.

Our section allows a maximum of two sponsors per monthly meeting (one each of the Gold and Silver Sponsors) and six sponsors for the annual workshop (two each of the Gold, Silver, and Bronze Sponsors). The Gold and Silver sponsorship fees are \$350 and \$250 for monthly lunch meetings, and \$500, \$350, and \$250 for the annual workshop. In return, benefits provided to the sponsor include the following:

#### **Gold Sponsor**

- Sponsor can talk/present during the ITE meeting/workshop. The talk/presentation time is not to exceed five minutes.
- Sponsor can bring his own pamphlets and distribute them during the meeting.
- Sponsor's logo and web address will be included in the meeting announcement that will be circulated to the SF Bay Area ITE members and posted in the SF Bay Area ITE website ([www.sfbayite.org](http://www.sfbayite.org)).
- RSVP fee will be waived and lunch will be provided for one representative of the sponsor.

#### **Silver Sponsor**

- Sponsor can bring his own pamphlets and distribute them during the meeting.
- Sponsor's logo and web address will be included in the meeting announcement that will be circulated to the SF Bay Area ITE members and posted in the SF Bay Area ITE website ([www.sfbayite.org](http://www.sfbayite.org)).
- RSVP fee will be waived and lunch will be provided for one representative of the sponsor.

#### **Bronze Sponsor (annual workshop only)**

- Sponsor's logo and web address will be included in the meeting announcement that will be circulated to the SF Bay Area ITE members and posted in the SF Bay Area ITE website ([www.sfbayite.org](http://www.sfbayite.org)).

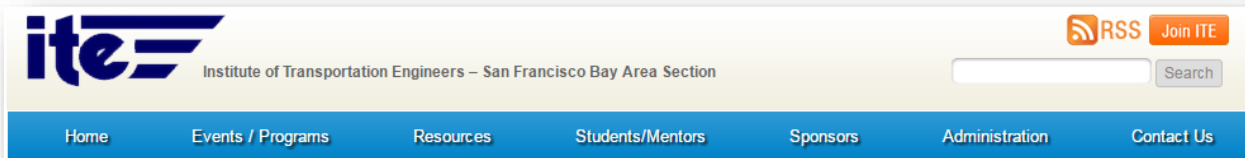
As part of this program, the SF Bay Area ITE Section has collected sponsorship fees from eight sponsors during 2015 – Iteris, Transport Simulation Systems/Aimsun, PTV Group, Citilabs, Arup, VIMOC, Fehr & Peers, and Kimley-Horn.



### SECTION WEBSITE

Over the last year, the content of our section's website<sup>3</sup> has been continuously updated. Key content included:

- Event pages, including information and registration for upcoming Section luncheons
- Program pages, including the Section's Annual Awards and calls for volunteers for meetings
- Local job listings, showing job opportunities in the region as submitted by the community



Efforts are underway to improve the “look and feel” of the front page of the website, which was impacted by the likely discontinuation of a key plug-in. A website relaunch “from scratch” provides the opportunity to improve the overall experience and the ability of members to get key information from the section.

### 2015 WESTERN DISTRICT ANNUAL MEETING

The 2015 ITE Western District Annual Meeting was held in Las Vegas, NV on July 19 through July 22, 2015. This meeting was attended by outgoing SF Bay ITE President Kimberly Leung. Our section sponsored her

attendance to represent us at the 2015 Western District Annual Meeting. She volunteered for the MiteY Race, a fundraiser for the District's Student Endowment Fund, on Saturday afternoon; assisted with a resume review workshop with the students on Tuesday morning; and a professional development session with young professionals on Tuesday afternoon.



During the Annual District Board Meeting on Sunday, SF Bay and Central Coast ITE were awarded the 2019 Annual Meeting to be held in Monterey, California. Kimberly Leung of our section and Justin Link of the Central Coast ITE Section will be the Local Arrangements Committee (LAC) Co-Chairs for this event.

On Tuesday morning, Kimberly participated in an invitation-only Leadership Breakfast with fellow district, section, and chapter leaders. The biggest takeaway from this session was that the San Diego Section has been able to obtain non-profit status. Additionally, many sections and chapters spoke about

---

<sup>3</sup> [www.sfbayite.org](http://www.sfbayite.org)

## *Other Section Activities*

---

the restructuring of membership and how it has resulted in less money in their accounts to support their events. Our section has since been working on obtaining non-profit status and is closely monitoring the section's budget.

At the Wednesday luncheon, our section was presented with a Membership Award for "Highest Number Gain Award." There have been 35 more new members to our section in the past year. Also, for the first time, there was a tie for this award. The NorCal Section also gained 35 members.

The SF Bay ITE student chapters have not attended the District Annual Meetings since 2012, but this year, four student participants from the Cal ITE Student Chapter also attended the 2015 Annual Meeting.



### AFFILIATE ACTIVITIES

#### SOUTH BAY TRANSPORTATION OFFICIALS ASSOCIATION

SBTOA remained as an affiliate of the SF Bay Area ITE Section until June 2015, but was established as an independent professional organization after that. Hence, SBTOA's operations until June 2015 are included in this report.

SBTOA had a very successful 2015 with 5 lunch meetings between January and May of 2015. A summary of the lunch meetings are listed below. The SBTOA Annual Report is included in Appendix D.

#### 2015 SBTOA MEETINGS

|                    |  |                       |
|--------------------|--|-----------------------|
| <b>JANUARY 13</b>  | <b>EXPRESSWAY PLAN 2040 AND CIRCULATION &amp; MOBILITY ELEMENT</b>                             |                       |
| <i>Presenters:</i> | Dawn Cameron, Santa Clara County RDA   |                       |
| <i>Location:</i>   | Flames Eatery & Bar, San Jose  | <i>Attendance: 53</i> |
| <b>FEBRUARY 10</b> | <b>SFO RUNWAY SAFETY AREA IMPROVEMENTS</b>   |                       |
| <i>Presenters:</i> | Mark Fantozzi, AECOM   |                       |
| <i>Location:</i>   | Farmers Union, San Jose  | <i>Attendance: 42</i> |
| <b>MARCH 10</b>    | <b>THE FUTURE OF VTA</b>   |                       |
| <i>Presenters:</i> | Nuria Fernandez, Santa Clara County Valley Transportation Authority                            |                       |
| <i>Location:</i>   | Scott's Seafood, San Jose  | <i>Attendance: 77</i> |
| <b>APRIL 14</b>    | <b>FREEDOM TO MOVE – HOW THE VTA CAN CREATE BETTER TRANSPORTATION CHOICES IN THE SOUTH BAY</b> |                       |
| <i>Presenters:</i> | Ratna Amin, SPUR   |                       |
| <i>Location:</i>   | Scott's Seafood, San Jose  | <i>Attendance: 41</i> |
| <b>MAY 14</b>      | <b>SAN BRUNO GRADE SEPARATION PROJECT</b>  |                       |
| <i>Presenters:</i> | Rafael Bolon, SamTrans   |                       |
| <i>Location:</i>   | Donato Enoteca Restaurant, Redwood City  | <i>Attendance: 40</i> |

## *Appendix A – Meeting Flyers*

---

## ITE Annual Awards & Bring a Colleague Month Thursday, January 22, 2015

Join the SF Bay Area Section of the Institute of Transportation Engineers (ITE) for our Annual Awards ceremony, honoring the 2014 Professional of the Year and the 2014 Project of the Year. Additionally, the Section will present a Lifetime Achievement Award to a very distinguished member. January is also our "Bring a Colleague" month where a member can register and bring a non-member for free!

We want you to Bring A Colleague to the January lunch meeting! If you are already a member of ITE, when you register for the January lunch meeting you can bring a non-member for free.

Added perk: non-members who sign up for ITE membership in the month of January will get to attend one of our fantastic and informational lunch meetings in 2015!

Non-members that sign-up in January can provide proof of membership by sending a copy of their receipt by emailing it to [sboardman@w-trans.com](mailto:sboardman@w-trans.com)

### PROGRAM

- Presentation of the Lifetime Achievement Award to **Chris D. Kinzel**, Vice President, TJKM Transportation Consultants
- Presentation of the Annual Awards Professional of the Year - **Michelle DeRobertis**
- Project of the Year – **Cesar Chavez Streetscape Project in San Francisco** (followed by a presentation by **Mike Sallaberry**, San Francisco Municipal Transportation Agency)

### SCHEDULE

|          |                               |
|----------|-------------------------------|
| 11:30 AM | Check-in and social time      |
| 12:00 PM | Introductions & announcements |
| 12:15 PM | Presentations with Q&A        |
| 1:30 PM  | Conclusion of meeting         |

### MEETING LOCATION

**Metropolitan Transportation Commission**  
101 8<sup>th</sup> Street  
Auditorium (1<sup>st</sup> Floor)  
Oakland, CA 94607

**Public Transit:** Go to [www.511.org](http://www.511.org) for help with trip planning. The nearest BART station is the Lake Merritt Station, directly across from the MTC.

**Parking:** Parking is available at various downtown Oakland garages and is within a 5-minute walk of the MTC.

### MENU

Each sandwich box includes chips, fresh fruit, and a cookie. Sandwich choices are:

- Roasted Turkey
- Roast Beef
- Smoked Ham
- Vegetarian



Photo credit: SFDPAW

### LUNCH PRICES

|      |                                |
|------|--------------------------------|
| \$20 | ITE Members                    |
| \$25 | Non-Members                    |
| \$10 | ITE Student/Unemployed Members |

### HOW TO SIGN UP

To RSVP, please register and prepay at this link: <https://events.r20.constantcontact.com/register/eventReg?oeidk=a07ea1x659w0650b5f8&oseq=&c=&ch=>. If you have questions, call or e-mail Bhanu Kala at 415.653.3313 or [KalaBP@cdmsmith.com](mailto:KalaBP@cdmsmith.com). **Walk-ins will be charged \$5 extra.**

### RSVP/CANCELLATION DEADLINE

The RSVP and cancellation deadline is **Monday, January 19 at noon**. Those who RSVP by Friday, January 16 will be entered into a drawing for a \$25 gift card. Cancellations can be e-mailed to [cancel2014@sfbayite.org](mailto:cancel2014@sfbayite.org).

**Seating capacity is limited to 50.**

## Connectivity and Mobility

### Thursday, February 19, 2015

Join the SF Bay Area Section of the Institute of Transportation Engineers (ITE) for February's lunch meeting. The presenters will focus on big data and congestion management, Bay Area Bike Share, and the Clipper Card.

#### PRESENTERS

- **Sandra Lennie**, Iteris, Big Data and Congestion Management in the Bay Area
- **Heath Maddox**, San Francisco Municipal Transportation Agency, Bay Area Bike Share
- **Jason Weinstein**, Metropolitan Transportation Commission, Clipper Card

#### SCHEDULE

- 11:30 AM Check-in and social time  
12:00 PM Introductions & announcements  
12:15 PM Presentations with Q&A  
1:30 PM Conclusion of meeting

#### MEETING LOCATION

##### Jillian's

175 4<sup>th</sup> Street  
San Francisco, CA 94103  
Phone: 415.369.6101

<http://www.jillianssf.com/>

**Public Transit:** Go to [www.511.org](http://www.511.org) for help with trip planning. The nearest BART station is Powell BART station, just 5 minute away from the restaurant.

**Parking:** The Fifth & Mission/ Yerba Buena Parking Garage is located one block away from the restaurant.



#### MENU

Each entree is served with Caesar salad with garlic croutons, fresh baked bread and butter, and soda or iced tea. Coffee and tea are available after the meal.

Entrees to choose from:

- (C) Chicken salad sandwich with brie, bacon, and potato chips
- (F) Grilled fish tacos with pineapple-mango salsa, rice, and beans
- (V) Fettucini alfredo

#### LUNCH PRICES

- \$30 ITE Members  
\$40 Non-Members  
\$20 ITE Student/Unemployed Members

#### HOW TO SIGN UP

To RSVP, please register and prepay at this [link](http://events.constantcontact.com/register/event?llr=5pu4rpfab&oeidk=a07e6aq4pyu10236cd1):  
<http://events.constantcontact.com/register/event?llr=5pu4rpfab&oeidk=a07e6aq4pyu10236cd1>.  
If you have questions, call or e-mail Bhanu Kala at 415.701.4653 or [kalabp@cdmsmith.com](mailto:kalabp@cdmsmith.com).

**Walk-ins will be charged \$10 extra.**

#### RSVP/CANCELLATION DEADLINE

The RSVP and cancellation deadline is **Monday, February 16 at noon**. Those who RSVP by Friday, February 13 will be entered into a drawing for a \$25 prepaid credit card. Cancellations can be e-mailed to [cancel@sfbayite.org](mailto:cancel@sfbayite.org).

**Seating capacity is limited to 60.**



## Big Data and Visualization

### Thursday, March 19, 2015

Join the SF Bay Area Section of the Institute of Transportation Engineers (ITE) for March's lunch meeting. The presenters will focus on big data and visualization.

#### PRESENTERS

- **Matt Goynes**, Fehr and Peers, Mixed-Use Development (MXD) Trip Generation and Visualization
- **Dan Howard**, San Francisco Municipal Transportation Agency, Scenario-Based Transit Map
- **Beaudry Kock**, RideScout, Role of Big Data in Delivering Seamless Multimodal Mobility

#### SCHEDULE

- 11:30 AM Check-in and social time
- 12:00 PM Introductions & announcements
- 12:15 PM Presentations with Q&A
- 1:30 PM Conclusion of meeting

#### MEETING LOCATION

##### Ozumo

2251 Broadway  
Oakland, CA 94612  
510.286.9866

[www.ozumooakland.com](http://www.ozumooakland.com)

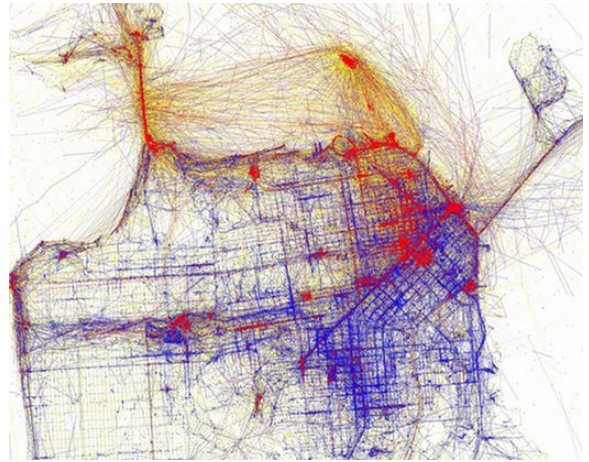
**Public Transit:** Go to [www.511.org](http://www.511.org) for help with trip planning. The nearest BART station is the 19<sup>th</sup> Street Oakland Station, a 5-minute walk to the restaurant.

**Parking:** Parking is available at various downtown Oakland garages and is within a 5-minute walk of the restaurant.

#### MENU

Each entrée is served with salad, warm edamame, and soda or iced tea. Entrees to choose from:

- Tori Chicken Bento
- Vegetable Tempura Bento
- Grilled Salmon Bento
- Gyu (steak) Bento
- Mifune (assortment of sushi rolls and nigiri) Bento



#### LUNCH PRICES

- \$30 ITE Members
- \$40 Non-Members
- \$20 ITE Student/Unemployed Members

#### HOW TO SIGN UP

To RSVP, please register and prepay at this [link](#). If you have questions, call or e-mail Bhanu Kala at 415.653.3313 or [kalabp@cdmsmith.com](mailto:kalabp@cdmsmith.com). **Walk-ins will be charged \$10 extra.**

#### RSVP/CANCELLATION DEADLINE

The RSVP and cancellation deadline is **Monday, March 16 at noon**. Those who RSVP by Friday, March 13 will be entered into a drawing for a \$25 prepaid credit card. Cancellations can be e-mailed to [cancel@sfbayite.org](mailto:cancel@sfbayite.org).

**Seating capacity is limited to 50.**

#### SPONSORS

##### Gold Sponsor

Iteris



##### Silver Sponsor

Fehr & Peers



Meeting information is also available online at <http://www.SFBayITE.org/>

# Autonomous Vehicles and Intelligent Transportation Systems

**Thursday, April 16, 2015**

Join the SF Bay Area Section of the Institute of Transportation Engineers (ITE) and ITS-CA for April's lunch meeting. The presenters will focus on autonomous vehicles and intelligent transportation systems.

## PRESENTERS

- **Melissa Ruhl**, San Jose State University, Student Paper Competition Grand Prize Winner  
Autonomous Vehicles: How It Rolls Out
- **Virginia Lingham**, MTC, Make No Little Plans! Think BIG for Connected Vehicle Deployments
- **Jim Misener**, Qualcomm, Car Connectivity  
Coming Soon: When does it happen and what happens to transportation?

## SCHEDULE

- 11:30 AM Check-in and social time
- 12:00 PM Introductions & announcements
- 12:15 PM Presentations with Q&A
- 1:30 PM Conclusion of meeting

## MEETING LOCATION

### Caltrans District 4

111 Grand Avenue  
Oakland, CA 94612

**Public Transit:** Go to [www.511.org](http://www.511.org) for help with trip planning. The nearest BART station is 19<sup>th</sup> Street Oakland, just 10 minute away from Caltrans.

**Parking:** Parking is available at various downtown Oakland garages and is within a 5-minute walk of the meeting location.



## MENU

Each sandwich box includes chips, fresh fruit, and a cookie. Sandwich choices are:

- Roasted Turkey
- Roast Beef
- Smoked Ham
- Vegetarian

## LUNCH PRICES

- \$20 ITE Members
- \$25 Non-Members
- \$10 ITE Student/Unemployed Members

## HOW TO SIGN UP

To RSVP, please register and prepay at this link:  
<http://events.r20.constantcontact.com/register/event?oeidk=a07eas0blv3169e9cec&llr=5pu4rpfab>  
. If you have questions, call or e-mail Bhanu Kala at 415.653.3313 or [kalabb@cdmsmith.com](mailto:kalabb@cdmsmith.com).  
**Walk-ins will be charged \$10 extra.**

## RSVP/CANCELLATION DEADLINE

The RSVP and cancellation deadline is **Monday, April 13 at noon**. Those who RSVP by Friday, April 10 will be entered into a drawing for a \$25 prepaid credit card. Cancellations can be e-mailed to [cancel@sfbayite.org](mailto:cancel@sfbayite.org).

**Seating capacity is limited to 60.**





## San Bruno Grade Separation Project

**Thursday, May 14, 2015**

Join the SF Bay Area Section of the Institute of Transportation Engineers (ITE) and South Bay Transportation Officials Association (SBTOA) for May's lunch meeting. The presenter will focus on the recently completed San Bruno Grade Separation Project.

### PRESENTERS

- **Rafael Bolon**, SamTrans, San Bruno Grade Separation Project

### SCHEDULE

- 11:30 AM Check-in and social time
- 12:00 PM Introductions & announcements
- 12:15 PM Presentation with Q&A
- 1:30 PM Conclusion of meeting

### MEETING LOCATION

#### Donato Enoteca

1041 Middlefield Road  
Redwood City, CA

**Public Transit:** Go to [www.511.org](http://www.511.org) for help with trip planning. The nearest Caltrain station is Redwood City, just 7 minutes away.

**Parking:** Parking is available across the street from the restaurant while many other parking facilities are within 5-minute walk of the meeting location.

### MENU

Each entrée includes a mixed green salad and a lemon panna cotta. Entrée choices are:

- Marinated grilled chicken breast
- Three meat ravioli
- Vegetarian tortelli
- Angus beef flank steak



### LUNCH PRICES

- \$30 Early Registration
- \$40 Walk-in Registration
- \$20 ITE Student/Unemployed Members

### HOW TO SIGN UP

To RSVP, please register and prepay at this link:  
<http://events.r20.constantcontact.com/register/event?oeidk=a07eas0blv3169e9cec&llr=5pu4rpfab>  
. If you have questions, call or e-mail Bhanu Kala at 415.653.3313 or [kalabp@cdmsmith.com](mailto:kalabp@cdmsmith.com).  
**Walk-ins will be charged \$10 extra.**

### RSVP/CANCELLATION DEADLINE

The RSVP and cancellation deadline is **Monday, May 11 at noon**. Those who RSVP by Friday, May 8 will be entered into a drawing for a \$25 prepaid credit card. Cancellations can be e-mailed to [cancel@sfbayite.org](mailto:cancel@sfbayite.org).

**Seating capacity is limited to 60.**

## Bay Area Transit Updates

### Thursday, June 18, 2015

Join the SF Bay Area Section of the Institute of Transportation Engineers (ITE) for June's lunch meeting. The presenters will provide updates on transit projects for three agencies: WETA, AC Transit, and SMART. Election results for the 2015-2016 SF Bay ITE Executive Board will also be announced.

#### PRESENTERS

- **Michael Gougherty**, WETA, Downtown San Francisco Ferry Terminal Expansion Project
- **David Wilkins**, AC Transit, International Boulevard BRT Project
- **Matt Stevens**, SMART, Initial Train Service and Bicycle-Pedestrian Pathway

#### SCHEDULE

- |          |                               |
|----------|-------------------------------|
| 11:30 AM | Check-in and social time      |
| 12:00 PM | Introductions & announcements |
| 12:15 PM | Presentations with Q&A        |
| 1:30 PM  | Conclusion of meeting         |

#### MEETING LOCATION

##### Ozumo

2251 Broadway  
Oakland, CA 94612  
510.286.9866  
[www.ozumooakland.com](http://www.ozumooakland.com)

**Public Transit:** Go to [www.511.org](http://www.511.org) for help with trip planning. The nearest BART station is the 19<sup>th</sup> Street Oakland Station, a 5-minute walk to the restaurant.

**Parking:** Parking is available at various downtown Oakland garages and is within a 5-minute walk of the restaurant.

#### MENU

Each entrée is served with salad, warm edamame, and soda or iced tea. Entrees to choose from:

- Tori Chicken Bento
- Vegetable Tempura Bento
- Grilled Salmon Bento
- Gyu (steak) Bento
- Mifune (assortment of sushi rolls and nigiri) Bento



#### LUNCH PRICES

- |      |                                |
|------|--------------------------------|
| \$30 | ITE Members                    |
| \$40 | Non-Members                    |
| \$20 | ITE Student/Unemployed Members |

#### HOW TO SIGN UP

To RSVP, please register and prepay at this link: <http://events.constantcontact.com/register/event?llr=5pu4rpfab&oeidk=a07eb2zc7a28d3fbbea>. If you have questions, call or e-mail Bhanu Kala at 415.653.3313 or [kalabp@cdmsmith.com](mailto:kalabp@cdmsmith.com). **Walk-ins will be charged \$10 extra.**

#### RSVP/CANCELLATION DEADLINE

The RSVP and cancellation deadline is **Monday, June 15 at noon**. Those who RSVP by Friday, June 12 will be entered into a drawing for a \$25 gift card. Cancellations can be e-mailed to [cancel@sfbayite.org](mailto:cancel@sfbayite.org).

**Seating capacity is limited to 50.**

## Bay Area Traffic – How Good (or Bad) Is It? Thursday, September 17, 2015

Join the SF Bay Area Section of the Institute of Transportation Engineers (ITE) for this year's kick-off lunch meeting focused on Western ITE's ongoing initiatives, Bay Area's "Vital Signs" performance monitoring, and most congested freeway segments. Additionally, the Section's officers for the 2015-2016 term will be sworn in.

### PRESENTERS

- **Cathy Leong**, ITE Western District President and Wilson Okamoto Corporation. "What's Up in the West"
- **Dave Vautin** and **Kristen Carnarius**, Metropolitan Transportation Commission (MTC). "MTC's Vital Signs Performance Monitoring Initiative: Taking the Pulse of the Bay Area"
- **Winnie Chung**, MTC. "Bay Area's Most Congested Freeway Segments"

### SCHEDULE

- |          |                               |
|----------|-------------------------------|
| 11:30 AM | Check-in and social time      |
| 12:00 PM | Introductions & announcements |
| 12:15 PM | Officers swearing-in          |
| 12:30 PM | Presentations with Q&A        |
| 1:45 PM  | Conclusion of meeting         |

### MEETING LOCATION

#### Ozumo Oakland

2251 Broadway  
Oakland, CA 94612  
510.286.9866

[www.ozumooakland.com](http://www.ozumooakland.com)

**Public Transit:** Go to [www.511.org](http://www.511.org) for help with trip planning. The nearest BART station is the 19<sup>th</sup> Street Oakland Station, a 5-minute walk to the restaurant.

**Parking:** Parking is available at various downtown Oakland garages and is within a 5-minute walk of the restaurant.



### MENU

Each entrée is served with salad, warm edamame, and soda or iced tea. Entrees to choose from:

- Tori Chicken Bento
- Vegetable Tempura Bento
- Grilled Salmon Bento
- Gyu (steak) Bento
- Mifune (assortment of sushi rolls and nigiri) Bento

### LUNCH PRICES

- |      |                                |
|------|--------------------------------|
| \$30 | ITE Members                    |
| \$40 | Non-Members                    |
| \$10 | ITE Student/Unemployed Members |

### HOW TO SIGN UP

To RSVP, please register and prepay at this link: <http://events.constantcontact.com/register/event?llr=5pu4rpfab&oeidk=a07ebgibke4454c12d0>. If you have questions, call or e-mail Frank Penry at 415.579.9060 or [FPenry@CHSConsulting.net](mailto:FPenry@CHSConsulting.net).

**Walk-ins will be charged \$10 extra.**

### RSVP/CANCELLATION DEADLINE

The RSVP and cancellation deadline is **Monday, September 14 at noon**. Those who RSVP by Friday, September 11 will be entered into a drawing for a \$25 prepaid credit card. Cancellations can be e-mailed to [cancel@sfbayite.org](mailto:cancel@sfbayite.org).

**Seating capacity is limited to 40.**

## Bay Area Rapid Transit (BART) - An Update Thursday, October 15, 2015

Join the SF Bay Area Section of the Institute of Transportation Engineers (ITE) for October's lunch meeting focused on BART Warm Springs Extension, City of Fremont's preparation for the new station, and BART planned new train cars.

### PRESENTERS

- **Paul Medved**, BART. "BART Warm Springs Extension – Project Update"
- **Hans Larsen**, City of Fremont. "Fremont's Hot Plans for Warm Springs"
- **Aaron Weinstein**, BART. "BART Fleet of the Future - Design and Public Outreach"

### SCHEDULE

|          |                               |
|----------|-------------------------------|
| 11:30 AM | Check-in and social time      |
| 12:00 PM | Introductions & announcements |
| 12:15 PM | Presentations with Q&A        |
| 1:30 PM  | Conclusion of meeting         |

### MEETING LOCATION

#### Jillian's

175 4<sup>th</sup> Street  
San Francisco, CA 94103  
Phone: 415.369.6101  
<http://www.jillianssf.com/>

**Public Transit:** Go to [www.511.org](http://www.511.org) for help with trip planning. The nearest BART station is Powell BART station, a 5-minute walk to the restaurant.

**Parking:** The Fifth & Mission/ Yerba Buena Parking Garage is located one block away from the restaurant.



### MENU

Each entree is served with Caesar salad with garlic croutons, fresh baked bread and butter, and soda or iced tea. Coffee and tea are available after the meal.

Entrees to choose from:

- (C) Chicken pesto on foccacia with provolone and fries
- (M) Meatball sub with marinara and mozzarella with mixed greens
- (V) Quinoa with roasted seasonal vegetables with herbs and olive oil

### LUNCH PRICES

|      |                                |
|------|--------------------------------|
| \$30 | ITE Members                    |
| \$40 | Non-Members                    |
| \$10 | ITE Student/Unemployed Members |

### HOW TO SIGN UP

To RSVP, please register and prepay at this link:  
<http://events.r20.constantcontact.com/register/event?oeidk=a07ebl01y6i1c5dcf20&llr=5pu4rpfab>  
If you have questions, call or e-mail Frank Penry at 415.579.9060 or [FPenry@CHSConsulting.net](mailto:FPenry@CHSConsulting.net).  
**Walk-ins will be charged \$10 extra.**

### RSVP/CANCELLATION DEADLINE

The RSVP and cancellation deadline is **Monday, October 12 at noon**. Those who RSVP by Friday, October 9 will be entered into a drawing for a \$25 prepaid gift card. Cancellations can be e-mailed to [cancel@sfbayite.org](mailto:cancel@sfbayite.org).

**Seating capacity is limited to 60.**



## Arterial Programs in Bay Area

**Thursday, November 19, 2015**

Join the SF Bay Area Section of the Institute of Transportation Engineers (ITE) and East Bay Traffic Engineers (EBTE) for November's lunch meeting focused on Arterial Programs in the Bay Area.

### PRESENTERS

- **David Man**, Caltrans. "Away from Isolation: Caltrans Arterial Management"
- **Linda Lee**, MTC. "MTC's Arterial Operations Program: Past, Present, Future"
- **Saravana Suthanthira**, ACTC. "Alameda Countywide Multimodal Arterial Plan"

### SCHEDULE

- 11:30 AM Check-in and social time
- 12:00 PM Introductions & announcements
- 12:15 PM Presentations with Q&A
- 1:30 PM Conclusion of meeting

### MEETING LOCATION

#### Peony Seafood Restaurant

388 9<sup>th</sup> St, Suite 288  
(between Franklin St & Webster St)  
Oakland, CA 94607  
Phone: 510.286.8866  
<http://peony388.com/>

**Public Transit:** Go to [www.511.org](http://www.511.org) for help with trip planning. The nearest BART station is 12<sup>th</sup> St./Oakland City Center station, a 7-minute walk to the restaurant.

**Parking:** Underground parking is available in the building.



### MENU

Chinese family style menu will be served.

### LUNCH PRICES

- \$30 ITE Members
- \$40 Non-Members
- \$10 ITE Student/Unemployed Members

### HOW TO SIGN UP

To RSVP, please register and prepay at this link: <http://events.constantcontact.com/register/event?llr=5pu4rpfab&oeidk=a07ebqqiddtbc445015>. If you have questions, call or e-mail Frank Penry at 415.579.9060 or [FPenry@CHSConsulting.net](mailto:FPenry@CHSConsulting.net).  
**Walk-ins will be charged \$10 extra.**

### RSVP/CANCELLATION DEADLINE

The RSVP and cancellation deadline is **Monday, November 16 at noon**. Those who RSVP by Friday, November 13 will be entered into a drawing for a \$25 prepaid gift card. Cancellations can be e-mailed to [cancel@sfbayite.org](mailto:cancel@sfbayite.org).

**Seating capacity is limited to 70.**

### SPONSORS

#### Silver Sponsor

Kimley-Horn and Associates, Inc.

**Kimley»Horn**  
Expect More. Experience Better.



## 2015 SF BAY AREA ITE Annual Golf Tournament Friday, June 12, 2015

Join the SF Bay Area Section of the Institute of Transportation Engineers (ITE) for this year's Student Scholarship Fund / Annual Golf Tournament on June 12, 2015 at the Tilden Park Golf Course. Nestled in the Berkeley Hills, the course has stunning views of the Bay and City skylines.

This is an amazing fundraising event, in its third year hosted solely by the San Francisco Bay Area ITE Section. Individual participation and corporate sponsorship will help provide financial assistance (scholarships and awards) to outstanding students in our community, helping them to succeed in their pursuit of engineering careers.

### SCHEDULE

|          |                                  |
|----------|----------------------------------|
| 10:00 AM | Check-in and social time (games) |
| 11:30 PM | Lunch and range time             |
| 1:00 PM  | Shotgun tee-off                  |
| 6:00 PM  | BBQ Dinner and awards            |

### LOCATION

#### Tilden Park Golf Course

10 Golf Course Drive  
Berkeley, CA 94708  
(510) 848-7373

<http://www.tildenparkgc.com/>

### REGISTRATION

\$90 ITE Members/Non-Members

\$75 ITE Students

(\$10 increase for registrations after May 22<sup>th</sup>)

**Registration closes at noon May 29th!!**



### REGISTRATION INCLUDES

18 holes, cart, range balls, deli box lunch, BBQ dinner, drink tickets, awards, and prizes.

### HOW TO SIGN UP

To RSVP, please register and prepay using the attached form, or at the weblink provided below.

If you have questions, contact Frank Penry at 707.236.1537 or [frank.penry@ghd.com](mailto:frank.penry@ghd.com).

### SPONSORS

Sponsorships for this event are welcome and greatly appreciated. Please see the attached letter to sponsors for more information; remember each sponsor includes special recognition at the event.

If your firm is interested in sponsoring this event and has questions, please contact Frank Penry at 707.236.1537 or [frank.penry@ghd.com](mailto:frank.penry@ghd.com).

**Sponsorship funds are used for awards and prizes for tournament participants and contributions to the Section Scholarship Fund**

**\*\*Thank you for your support and consideration\*\***







The San Francisco Bay Area ITE Section will offer a one-day workshop on professional traffic/transportation modeling technologies.

**TITLE:** 7th Annual SF Bay Area ITE Transportation Modeling Workshop:  
Modeling for Sustainable Complete Streets/Multi-Modal Transportation  
Planning

**DATE:** Wednesday, April 29, 2015

**TIME:** 8:30 a.m. -5:00 p.m.

**PDH/CEU:** (To be determined soon)

**FEE:** \$40 ITE Members  
\$65 Non-Members  
\$20 ITE Student/Unemployed/Retired Members.  
This fee includes buffet lunch and coffee breaks

**BACKGROUND:** Following the great success of our last six Annual SF Bay Area ITE Transportation Modeling Workshops, with participants gathered from around the world, the San Francisco Bay Area ITE is organizing the Sixth Annual Transportation Modeling Workshop on April 29, 2015. The theme of this workshop is "Modeling for Sustainable Complete Streets/Multi-Modal Transportation Planning". The objectives of this seminar are to show what innovative transportation modeling tools are available to our engineers and planners in the transportation modeling industry, and how these tools can be applied to transportation planning/engineering projects.

This year, speakers are representatives from the international transportation modeling software development industries, UC Davis, Santa Clara Valley Transportation Authority, and many others who will talk about the current modeling development status, meso-scopic modeling, land use models linked to the transportation models, traffic control systems and the traffic data collection technologies. Some presentations were made at the last TRB conference or will be presented in future ITE conferences.

The application areas may include:

1. California SB 375 and urban/transportation planning,
2. land use modeling systems,
3. green house gas reduction,
4. travel demand forecasting methodologies,
5. highway operations with the meso and micro simulations,
6. adaptive traffic control and ITS applications,
7. modeling connected vehicles
8. transit operations,
9. data collections technologies
10. integration methodologies linking planning, design, control and management .

Real applications from around the world, as well as from California, will be featured in this workshop.

**INTENDED AUDIENCE:** Urban and Transportation Planners, Demand Forecasting Modelers,  
Traffic/Transportation Engineers, Consultants, Government Staff, and Students

**PRESENTERS/** Internationally renowned superstars will join our own locally famous heroes to share the



latest transportation modeling technologies and research.

**SCHEDULE:**

- 8:00 a.m.-8:30 a.m. (Registration)
- 8:30 a.m.-9:00 a.m.  
**Introduction to USTDA-China Joint Pilot Project on ATMS with Adaptive Control: From Modeling to Implementation in Guangzhou**  
Jia Hao Wu, SF Bay Area ITE/W & S Solutions, LLC
- 9:00 a.m.-9:30 a.m. (Moderator A)  
**Big Data for Models**  
Rob Hranac, Iteris
- 9:30 a.m.-10:00 a.m. (Moderator A)  
**Bicycle Detections for the Advanced Traffic Controls in California**  
Dave Candey, Econolite
- 10:00 a.m.-10:15 a.m. (Coffee Break)
- 10:15 a.m.-10:45 a.m. (Moderator A)  
**California Statewide Model In Cube Cloud**  
Matthew Martimo, Citilabs
- 10:45 a.m.-11:15 a.m. (Moderator A)  
**Management and Integration of Data and Travel Demand Modeling at the Santa Clara County Congestion Management Agency**  
Peter Chen, VTA
- 11:15 a.m.-11:20 a.m. (Moderator A)  
**Sponsorship Presentation**
- 11:20 a.m.-1:00 p.m. (Lunch)
- 1:00 p.m.-1:30 p.m. (Moderator B)  
**Integration Methodologies Linking Planning, Design, Control and Management for Highway Operations**  
Alex Gerodimos, TSS-Transport Simulation Systems
- 1:30 p.m.-2:00 p.m. (Moderator B)  
**New Developments in Emme with Applications**  
Shane Velan, INRO
- 2:00 p.m.-2:05 p.m. (Moderator B)  
**Sponsorship Presentations**
- 2:05 p.m.-2:30 p.m. (Coffee Break)
- 2:30 p.m.-3:00 p.m. (Moderator C)  
**Multi-Resolution Modeling with the PTV Vision Traffic Suite**  
Bill Cisco, PTV America
- 3:00 p.m.-3:30 p.m. (Moderator C)  
**Using Advanced Travel Models and Urban Models for Multi-Criteria Analyses**  
Caroline J. Rodier, UC Davis
- 3:30 p.m.-4:00 p.m. (Moderator C)  
**Q&A Session**  
**Appreciations/Acknowledgments**  
Moderator A:  
Moderator B:  
Moderator C:

**REGISTRATION:** To RSVP, please register and prepay at this link:  
<http://events.constantcontact.com/register/event?llr=5pu4rpfab&oeidk=a07e74sye2bc4ee1bba>. If you have questions, please direct general inquiries to Jia Hao Wu (jiahao.wu@wu-



INSTITUTE OF TRANSPORTATION ENGINEERS  
San Francisco Bay Area Section

---

2014-2015 Officers: President Kimberly Leung, Vice-President Paul Stanis, Treasurer Lin Zhang, Secretary Bhanu Kala

---

song.com). Walk-ins will be charged \$5 extra.

**RSVP/CANCELLATION DEADLINE**

The RSVP and cancellation deadline is Monday, April 27. Seating capacity is limited to 90.

**LOCATION/  
TRANSPORTATION**

San Francisco Municipal Transportation Agency (SFMTA) at the 2nd Floor Atrium, One South Van Ness Avenue, San Francisco, CA 94103

**MORE  
INFORMATION:**

Visit SF Bay Area ITE Section Website for updated information.

**SPONSORSHIPS** Gold: TSS



Silver: PTV GROUP



## *Appendix B – Students' Meeting Attendance Summaries*

---

## Western District Annual Meeting Experience

July 25, 2015

Dear SF Bay ITE,

Coming off my eye-opening experience at the ITE Student Leadership Summit in Sacramento earlier this year, I jumped at the opportunity to attend the Western ITE Annual Meeting in Las Vegas. It was important to keep the momentum of Cal ITE's improvement and growth going into the next school year. Whereas at the SLS, I was exposed to the wider world of ITE, the Annual Meeting exposed me to all the different problems and projects that transportation engineers work on. This included everything from complete streets, to data collection, to workplace etiquette. I'd never actually taken a transportation engineering class before so my entire experience with the field had been through Cal ITE's guest speakers and a brief job shadowing experience at a transportation firm. I appreciated being able to get down into the technical realm to see what exactly transportation engineers deal with.

The speakers that most impressed me were the ones who talked about creative and innovative solutions that are being implemented to improve transportation systems under existing funding and political constraints. For example, many metropolitan areas are fully built out, meaning that highway and roadway expansions can be prohibitively expensive. That begs the question of how to deal with growth and increasing congestion. I learned about active transportation management systems which basically give drivers more relevant information through measures like changeable sign boards, traffic cameras, and changeable speed limits. These prepare drivers for changing conditions, reduce the number of traffic incidents and the time it takes to clear them, and makes traffic flow more smoothly. ATMS are a fraction of the cost of road widening and provide significant congestion management benefits. Other ideas include the use of apps to spread out drivers across a road network and building express lanes in existing rights-of-way. I was also impressed by examples of pilot projects to get a quick temporary implementation to show people and stakeholders the potential costs and benefits of a project. It seems to take forever (particularly in the San Francisco Bay Area) to get transportation projects implemented. Done right, pilot projects can be an effective way of ironing out problems in a project design and drumming up support for the project. There was an example from the Bay Area where the engineers implemented a pilot of a street redesign of the main street in downtown Morgan Hill. They were able to test two alternative designs and get concrete evidence of what works and what doesn't. From hearing about these projects and talking to people at the Annual Meeting, I know that the work that transportation engineers do can really define a city and how its inhabitants go through their daily lives. It's made me all the more enthusiastic to pursue my personal interest in transit and rail projects as a career.

Sincerely,  
Adrian Diaz de Rivera  
Cal ITE Member



## **Western District Annual Meeting Experience – David Lee, Cal ITE Student Chapter Member**

Dear San Francisco Bay Institute of Transportation Engineers,

Hello. My name is David Lee. I want to thank you for sending four Cal ITE members including myself to the 2015 Western ITE meeting in Las Vegas two weeks ago. I learned a lot of new technologies and planning methodologies that are introduced into the field of transportation engineering. In the next few paragraphs below, I want to summarize the technical presentations given by the top professionals in the field, some of which were personally most intriguing.

I was introduced to Mike Hand from RTC on July 20<sup>th</sup>. The title of his presentation was called “Funding Transportation in Southern Nevada Past, Present, Future” One introduction slide I noticed particularly was the estimated growth of population in Nevada: “Almost triple in 2015 compared to 1990. He then began to recapitulate few key legislations such as the Master Transportation Plan Fair Share Funding Program and the 6 revenue sources from the 1990 Ballot Question (unfortunately, I could not write down all the 6 sources due to the pace of his presentation). In his concluding slides, he believed that roughly \$33.6 million dollars will be invested in transit project which will lead to more job creation through the capital improvement program.

In the next presentation Josh Mellow from Alta Planning and Design preformed a complete street related project on Morgan Hill, CA. He collaborated with the city of Morgan Hill and Harvis & Associate to expand pedestrian space and buffered bike lane for a two-day trial. He gave results of community and Business owner’s approval ratings, collected data of travel time of transits. In conclusion, the buffered bike lane gave a few percent increase in parking occupancy, led to less noise, and an increase transit running time of 11 seconds.

These were few of the presentations that I attended and gave me a better perspective of how professional are conducting traffic study impacts to further increase mobility and revenue of businesses while keeping engineering practices at excellent qualities. I learned that this is a rewarding career and in order for me to delve deeper into this career field, a full-time entry level position will be necessary after my internship with Abraham Associates. Once again thank you again for sending me to the Annual Meeting. I look forward meeting with you soon at the upcoming SF Bay ITE meetings.

Best Regards,  
David Lee

## **Western District Annual Meeting Experience – Isabel Viegas de Rivera, Cal ITE Student Chapter Member**

Attending the ITE Western District meeting has changed how I perceive the Institute of Transportation Engineers. I joined ITE the end of my sophomore year and had rarely seen what the organization was about. More importantly, I had no idea how big of a community it was! Since I was not in town and able to attend the Leadership Summit, the ITE Western District Meeting was the first time I was able to experience what ITE really stands for, and it was inspiring.

The Kell Student Competition was the first event I attended. At first I was very shy about interacting with other students—and I must say, big schools like SLO, Pomona, and BYU are intimidating. But soon I realized every single student there has something in common: they legitimately enjoy transportation engineering. Furthermore, with so many different people present, it was also abundantly clear that people had diversified interests in the field. Some enjoyed traffic engineering; some wanted to go into transportation engineering technology; some were obsessed with transit; and some wanted to perfect sensors. To see so much passion for the subject coming from people my age was truly inspiring. More importantly, especially because UC Berkeley approaches undergraduate transportation engineering so theoretically, I realized how much I still have to learn to catch up with other students.

While UC Berkeley unfortunately did not have a team for the Student Traffic Bowl, I decided to make the most of my time there and attend a number of Technical Sessions. Looking back, it is difficult to elect one as a favorite. The Complete Streets session—which looked at the concept of complete street, paths to implementation, and examples—was amazing. Having taken CP 114: Introduction to Urban and Regional Transportation Planning, I was already familiar with the idea of Complete Streets. Seeing them put into action by Mike Janssen was a thrill! The many ways he transformed the 80-foot wide streets he had was beyond educational.

I also really enjoyed Jaime Rodriguez's presentation on the role the Internet of Things plays on the future of transportation. As we constantly create more and more data with our sensors and cameras, the question of its utility arises. Jaime spoke about the creation of a layer in the Internet where real time, semi-processed data of the built environment is stored and available for use. This would allow multiple stakeholders to develop systems that use the data to improve transportation operations. Watching him talk of the applications in small cities in the South Bay and the possibilities of expansion made me excited to enter the professional field.

Furthermore, I believe that the workshops put on for the students and young professionals were extremely helpful. I got the chance to talk to two people during the Resume Workshop, and through critiques of my resume and sharing their personal career paths really illuminated ways I could put myself out there in the professional world. The Young Professional

While I have learned a lot about technical aspects of transportation engineering, the ITE Western District Meeting also showed me how much of a community ITE actually is. Listening to people talk about the members who were receiving awards for 10, 20 years of commitment and contributions demonstrated the importance of the ITE community in these members' lives. ITE is clearly one of those groups that you get as much as you give, and the UC Berkeley Student Chapter has so much more to give, because I am personally grateful for how much I've gotten out of it—even if it was for a few days.

## **Western District Annual Meeting Experience – Sean Yen, Cal ITE Student Chapter Member**

Sean Yen

7/29/15

### **ITE Western District Meeting 2015 Reflections**

At the meeting, I attended several workshops and presentations and was fortunate to be exposed to a wide range of topics and projects. The first concept that was repeatedly brought up was the importance for transportation engineer/planner to communicate effectively with the public about their agenda and/or proposal. Traditionally there has been a lack of trust and mutual respect between the two parties. Engineers/planners must be able to be patient in explaining their proposals and be aware of the public's complaints and concerns. At the same time, avoid compromising all their initial plans with the idea that designs can influence travel behavior instead of the other way around.

Another important aspect of this learning experience is seeing how software and technologies play important roles in modeling necessary data for presentations and analysis. After circling the exhibit tables and talking to a few representatives, I got to witness how different levels of detail in simulations serve the unique purpose of each individual project and are instrumental in projecting potential outcomes for each implementation. I also attended a technical session that displayed their project and explained how simulation modeling helps the design process of traffic signals for a railway that crosses through an intersection. The whole procedure of setting up parameters/constraints and simulating the outcome with software such as VISSIM is definitely one aspect of transportation engineering that I look forward to learning more about.

And at the young professional development workshop, I observed how I can be proactive in developing these technical skills through communicating with a supervisor in a professional manner about training opportunities. During the workshop, I also realized how I can improve my communication with my current boss as I witnessed an almost exact replica situation for requesting time off to attend a conference; a mistake that shall never happen again.

I am really grateful for this learning experience and the opportunities to network with professionals and students who share this passion in transportation engineering. Transportation is a broad field to get into and coming to this conference made me have a more concrete perspective on what potential focus I would be interested in. I also received good advice from other ITE student chapters on what sort of events to organize during the school year.

## ITE Leadership Summit: Sacramento

The Sacramento State (Sac State) ITE Chapter sought to prepare students for the professional world and to bring other ITE Chapters together. Sac State hosted a three-day conference gathering ITE from multiple states like California, Oregon, and Washington. Hundreds of future and current transportation engineers gathered at Sacramento to form the ITE summit. The ITE aimed to be beneficial for students and to shape the future leaders in transportation engineering.

On the first day, the conference started with the "Transportation Engineering in 2015-A Great Career Choice!" presentation. The beginning of the conference revealed the theme for the whole conference. Students were asked to be shuffled and encouraged to talk to other student chapters. Matt Spencer gave an excellent and inspiring presentation about the future of transportation and what students should know during their collegiate career. After the presentation, there was a dinner, a social hour, and a comedy show. These were great ways to meet new professionals and students. I sat with some friends that I met in Seattle and some new faces. I enjoyed the comical relief to finish the night.

On the second day, it started with the technical presentations. I learned a lot about roundabouts and Caltrans through the technical presentations. Following the technical presentations was the Transportation Panel Q&A. The Transportation Panel was my favorite because there was a good mix of casual and serious questions. I learned a lot from the panel and it definitely helped me decide my future career goals. Also, the Public Service Announcement (PSA) competition was introduced to everyone. The goal of the PSA competition was to design and present a complete street design. After a short break, there was a banquet. It was a great night with good food, great company, and an awesome dance floor.

On the final day, the PSA competition began. A lot of presentations were funny and creative. Overall, the presentations were great. It was great to see all the different designs and see how people approached the problem. For the presentation, some people focused on the technical aspects while others focused on the impact. During the award ceremony, my group received an honorable mention because we were the final presentation and we threw in a lot of jokes to liven up the crowd. Our presentation revolved around a safe transportation system that even a grandma could use.

In conclusion, I learned a lot from the summit. Everyone at the summit was friendly and nice. Spencer and Rea were great masters of ceremonies. Sac State was a great venue for the summit. I met a lot of great people from students to professionals. More important, I'm excited for next year for the summit to be held at Pomona!







Jared Gochuico  
SJSU ITE  
4/9/15

### **ITE Student Leadership Summit Summary**

My experience at the 2015 ITE Student Leadership Summit was fulfilling. Taking place at Sacramento State University on February 13 – 15<sup>th</sup>, the Leadership Summit involved many student-based activities and professional networking. I will present an overview of my time at the Summit with my colleagues and some of the memorable experiences that would have only been possible as a member of the SJSU ITE Student Chapter.

The ITE SLS was a three-day event that had presentations, competitions, and opportunities to demonstrate and grow one's leadership skills. I enjoyed the diverse mix of technical information, social activities and networking. The weekend began with the trip from San Jose to Sacramento in a carpool with my colleagues James Fok and Michael Tamin. We first attended the Transportation Industry Fair and were introduced to various transportation private companies and public agencies. My favorite company I spoke to was Omnimeans, one of the country's transportation consulting firms that specialize specifically in roundabouts and roundabout development. This company specifically stood out to me because it represents the depth of specialization within the transportation field. Truly, one can find any facet of transportation and specialize within it.

The main keynote presentations delved into transportation engineering as a career choice and the leadership skills necessary to become an effective leader. The summit then proceeded into brief technical presentations the following morning. The first technical presentation I visited was entitled "Using Big Data for Transportation Planning," hosted by Ronald T. Milam, Director of Technical Development at Fehr & Peers. Milam spoke about the integration of phone GPS systems as well as aerial views into the transportation field. I learned about how the transportation field is bringing innovation to the use of big data. Next, I visited the technical presentation "Leadership as seen through the 'Caltrans Lens'," where Rebecca L. Mowry, a senior engineer at Caltrans, explained the leadership philosophy of her public agency. This presentation highlighted the importance of strong leadership ethics from the top down in any organizational structure. The last presentation I enjoyed was entitled "Navigating the Disciplines of Transportation" by Keith Higgins, Vice President at Hatch Mott MacDonald. His presentation explored the diverse fields of transportation engineering and his specific career path choices. I gained valuable insight into career tips about choosing the right first job.

At the ITE SLS, beside technical presentations and keynote speakers is the underlying student experience. The remaining conference days focused on the PSA Competition in which groups of students between different schools participated in creating and presenting a public service announcement on the development of a street. This hands-on competition challenged us to display our technical know-how in complete street design as well as our presentation and leadership skills in leading and/or contributing to a small group environment. The ITE SLS successfully balanced fun, inter-school collaboration efforts with the topic of transportation engineering. On the last day, over a dozen PSA presentations were conducted and at the recognition ceremony my group won honorable mention for our design.

The ITE SLS was a rewarding experience. I met many schools and worked with them in a fast-paced competition. In addition, the professional networking (and at the very least, the professional exposure) gave me a new perspective on transportation engineering. I was able to develop a wider context on the importance of transportation engineering and possible career choices.

Summary of the 2015 ITE Student Leadership Summit, Sacramento, CA (February 13-15)

The Student Leadership Summit is an annual three-day event hosted by an Institute of Transportation (ITE) student chapter, starting with California Polytechnic State University, San Luis Obispo the previous year. The event, which attracts both student and professional ITE members alike from across the Western District, provides for countless opportunities to learn more about the field, network, and to overall enjoy the time with other students with similar interests.

This year, which is only its second occurrence, the event was hosted by the student chapter at Sacramento State University. This had been my first time attending a Student Leadership Summit, as I had not been able to attend the previous one, and did not quite know what to expect as I journeyed towards Sacramento. It was likely due to this that how many of the events were structured caught me off guard, in a very pleasant way.

Our first day consisted of us finding our way to Serna Plaza, where representatives of many firms and government agencies had tables to showcase their organizations and projects. The people there were exceedingly open and friendly, and I soon found myself visiting nearly every booth and learning a lot, whilst enjoying the freebies most tables handed out. After recovering from the harsh sun of Sacramento in our hotel rooms, we made our way back to the university campus to attend dinner accompanied by a series of presentations and speeches: Mr. Mark Spencer of W-Trans spoke of the seemingly infinite career choices within the exciting field of transportation engineering, whilst Mr. Will Kempton, former Executive Director at Caltrans, shared many of the experiences he has had in the industry to identify important characteristics engineers should strive for.

After a series of technical presentations on the second day, which covered a wide range of topics from connected vehicles and infrastructure to roundabout design, the day's activities could be broken down into two main parts: A public service announcement (PSA) competition and speed interviews. The PSA competition had students be divided into team, where each team would engineer a solution to a fictional street that had the potential to serve a variety of types of traffic, but acts largely as a commute corridor in its current state. Groups had to not only put together a design, but also prepare for a presentation in which the design will be showcased in front of a panel of professionals as well as students.

The speed interviews, which I admit seemed extremely nerve-wracking at first, went smoothly, with each professional providing advice based on how I answered their question, before moving on to the next professional with a different question. The questions were as varied, with some completely catching me off guard. They ranged from more thoughtful questions such as "How would you describe the differences between transportation and traffic engineering," to more creativity-requiring ones like "Give me five uses for the common red brick." In the end, I learned a lot about what interviewers are seeking, and felt more confident overall about my ability to answer such questions.

I found the student leadership summit to be a wholesome and exciting experience that I don't think I could have found anywhere else; I am sincerely glad that I was fortunate enough to be able to attend this year, and look forward to following iterations in the coming years.

## *Appendix C – STEP Mentoring Documents*

---

**Mentor Application Form**

Thank you for your interest in the ITE San Francisco Bay Area Section – Students in Transportation Engineering & Planning (STEP) Mentoring Program. More information about the program is available at [www.sfbayite.org/studentsmentors](http://www.sfbayite.org/studentsmentors). Please complete this form and return the completed application to:

Kimberly E. Leung, P.E.

San Francisco Municipal Transportation Agency

E-mail: [Kimberly.Leung@sfmta.com](mailto:Kimberly.Leung@sfmta.com)

Telephone: 415.701.4653

|                             |   |        |           |
|-----------------------------|---|--------|-----------|
| <b>Personal Information</b> | Name:   |        |           |
|                             | Address:  |        |           |
|                             | City:   | State: | Zip Code: |
|                             | Phone Number:   |        |           |
|                             | E-mail Address:   |        |           |
|                             | Hometown:   |        |           |
|                             | Employer:   |        |           |
|                             | Current Position:   |        |           |
| <b>Education</b>            | College/University:   |        |           |
|                             | Degree(s) Received and Major/Emphasis:  |        |           |
|                             | Other Colleges/Universities Attended:   |        |           |
|                             | High School Attended:   |        |           |
| <b>Mentee Preferences</b>   | Preferred gender of mentee: <input type="checkbox"/> Female <input type="checkbox"/> Male <input type="checkbox"/> No Preference  |        |           |
|                             | Preferred grade level of mentee: <input type="checkbox"/> Freshman <input type="checkbox"/> Sophomore <input type="checkbox"/> Junior <input type="checkbox"/> Senior<br><input type="checkbox"/> Masters Student <input type="checkbox"/> PhD Student <input type="checkbox"/> No Preference |        |           |
|                             | Preferred course of study of mentee: <input type="checkbox"/> Engineering <input type="checkbox"/> Planning <input type="checkbox"/> Both <input type="checkbox"/> No Preference  |        |           |
|                             | What would be the ideal mentee for you?   |        |           |
|                             | What structure would you prefer for your mentor-mentee relationship?<br><input type="checkbox"/> free-flowing/somewhat structured<br><input type="checkbox"/> regular/structured meetings   |        |           |

|                        |  |
|------------------------|--|
| Additional Information | Please list two of your career tracks or specialties.  |
|                        | Have you ever been a mentor before? Please describe the experience.  |
|                        | What professional organizations and community service are you involved with?   |
|                        | Do you have any additional questions or comments about the STEP Mentoring Program?   |
|                        | <b>Volunteer Opportunities</b><br>Please check the events that you would like to participate:<br><input type="checkbox"/> Informational Interview – answer student questions about your career area, either on the phone, via e-mail, or in-person)<br><input type="checkbox"/> Panel Discussions – sit on a panel with other professionals to share your perspective on topics related to career planning or your professional field)<br><input type="checkbox"/> Industry Tours – host a student group within your work place to provide a realistic picture of what daily work in your office entails |

**Thank you for completing this application form and for your interest in being a part of the mentoring program.**



## Mentee Application Form

Thank you for your interest in the ITE San Francisco Bay Area Section – Students in Transportation Engineering & Planning (STEP) Mentoring Program. More information about the program is available at [www.sfbayite.org/studentsmentors](http://www.sfbayite.org/studentsmentors). Please complete this form and return the completed application to:

Kimberly E. Leung, P.E.

San Francisco Municipal Transportation Agency

E-mail: [Kimberly.Leung@sfmta.com](mailto:Kimberly.Leung@sfmta.com)

Telephone: 415.701.4653

|                      |   |        |           |
|----------------------|---|--------|-----------|
| Personal Information | Name:   |        |           |
|                      | Address:  |        |           |
|                      | City:   | State: | Zip Code: |
|                      | Phone Number:   |        |           |
|                      | E-mail Address:   |        |           |
|                      | Hometown:   |        |           |
| Education            | College/University:   |        |           |
|                      | Major/Emphasis:   |        |           |
|                      | Other Colleges/Universities Attended:   |        |           |
|                      | High School Attended:   |        |           |
| Mentor Preferences   | Preferred gender of mentor: <input type="checkbox"/> Female <input type="checkbox"/> Male <input type="checkbox"/> No Preference  |        |           |
|                      | I prefer my mentor to have the following degree(s): <input type="checkbox"/> B.S. <input type="checkbox"/> M.S. <input type="checkbox"/> Ph. D <input type="checkbox"/> No Preference   |        |           |
|                      | I prefer my mentor to have the following degree(s): <input type="checkbox"/> Engineering <input type="checkbox"/> Planning <input type="checkbox"/> Both <input type="checkbox"/> No Preference   |        |           |
|                      | I am interested in working with a mentor in the areas of:<br><input type="checkbox"/> Personal development (i.e. speaking skills, written communication)<br><input type="checkbox"/> Professional development (i.e. presentation/networking skills)<br><input type="checkbox"/> Career development (i.e. career research/information, resume preparation) |        |           |
|                      | If we are unable to match you with a mentor immediately, would you like (check one):<br><input type="checkbox"/> to be placed on a waiting list and matched with the next available mentor according to your preferences<br><input type="checkbox"/> to be matched with another available mentor<br><input type="checkbox"/> other (please explain):      |        |           |
|                      | What structure would you prefer for your mentor-mentee relationship?<br><input type="checkbox"/> free-flowing/somewhat structured<br><input type="checkbox"/> regular/structured meetings   |        |           |
|                      |   |        |           |

|                        |  |
|------------------------|--|
| Additional Information | 1. What do you hope to get out of the STEP Mentoring Program?  |
|                        | 2. What student organizations and community service are you involved with?   |
|                        | 3. What are some of your hobbies and interests?  |
|                        | 4. How would you describe yourself in three words?   |
|                        | 5. How many hours per week do you spend studying?<br><input type="checkbox"/> 0 <input type="checkbox"/> 0-5 <input type="checkbox"/> 5-10 <input type="checkbox"/> 10-15 <input type="checkbox"/> More than 15  |
|                        | 6. How do you like to spend a typical Friday night?<br><input type="checkbox"/> Going to a party <input type="checkbox"/> Dinner and a movie <input type="checkbox"/> Renting a movie/cooking dinner<br><input type="checkbox"/> Curling up with a good book <input type="checkbox"/> Doing homework   |
|                        | 7. Which of the following ITE events have you attended? Please indicate the year that you last attended.<br><input type="checkbox"/> Student Chapter ITE General Meeting<br><input type="checkbox"/> SF Bay ITE Lunch Meeting<br><input type="checkbox"/> Western District Student Leadership Summit<br><input type="checkbox"/> Western District Annual Meeting |
|                        | 8. Do you have any additional questions or comments about the STEP Mentoring Program?  |

Thank you for completing this application form and for your interest in being a part of the mentoring program.

## Mentoring Program Contract

Please fill this out mentoring program contact during the initial meeting, and then return to Kimberly Leung at [kimberly.leung@sfmta.com](mailto:kimberly.leung@sfmta.com) for filing by November 25, 2015. Electronic signatures are okay.

### MENTOR

### MENTEE

#### GOALS

The three items that I would like to get from this program are:

|   |
|---|
| • |
| • |
| • |

The three goals that I would like to set for myself with this program are:

|   |
|---|
| • |
| • |
| • |

#### KNOWLEDGE

In order for me to assist you with your professional growth during the program year, I need to know:

|   |
|---|
| • |
| • |
| • |

In order for me to achieve the goals set above, I believe that I need to know more about:

|   |
|---|
| • |
| • |
| • |

#### TECHNOLOGY

Skills or a technology that I am particularly good at:

|   |
|---|
| • |
| • |
| • |

Insights or a technology that would be very helpful to me are:

|   |
|---|
| • |
| • |
| • |

**MENTOR****MENTEE****CONDUCT**

The likes, dislike, preferences and/or ways of doing things that you should be aware of about me are:

|   |
|---|
| • |
| • |
| • |

The likes, dislike, preferences and/or ways of doing things that you should be aware of about me are:

|   |
|---|
| • |
| • |
| • |

**LOGISTICS**

We agree to meet approximately \_\_\_\_ times(s) over this year for approximately \_\_\_\_ hour(s) each. We will try to meet face-to-face \_\_\_\_ for times over the next year at \_\_\_\_\_ (locations).

We prefer to have meetings \_\_\_\_\_ (when – mornings, lunch, after work, etc.) We agree to supplement meetings with phone calls and e-mails. We can best reach each other via \_\_\_\_\_.

We agree to be open, objective, and honest with each other. We agree that we will try our hardest not to cancel a meeting at the last minute. We understand that in order for this program to be effective, it is important for us not to let more than six weeks go by without contacting the other person.

---

MENTOR

---

MENTEE

---

DATE

---

DATE

## *Appendix D – SBTOA Annual Report*

---



**Institute of Transportation Engineers**  
**Section Annual Report**  
**For the period January 1, 2015 to December 31, 2015 for**  
**South Bay Transportation Officials Association (SBTOA) Section**  
**of the Institute of Transportation Engineers**

**Officers:**

**Current Officers and Committee Chairs (for 2016):**

|                |  |
|----------------|--|
| President      | Aruna Bodduna, Santa Clara County          |
| Vice President | Sarah Christensen, Mark Thomas and Company |
| Treasurer      | Matthew Jue, City of Campbell              |
| Secretary      | Anthony Silva, HNTB                        |
| Past President | Suzanne Luckjiff, Fehr & Peers             |

**Membership:**

SBTOA has no official membership nor dues. SBTOA's distribution list reaches approximately 540 people. Monthly lunch hour meeting attendance for 2015 is shown below, and typically includes one or two students. The SBTOA LinkedIn group has 235 members.

Was there a change in the Section Bylaws during this reporting period? (If yes, please attach a copy of the new bylaws.)

☐ Yes ☒ No

**Technical Activities:**

List Projects underway by title and, if available, provide expected date of completion: None

List Projects by title that were completed during this reporting period and, if available, attach a copy of the report: None

**Legislative Activities during this reporting period: None**

**Meetings held during this reporting period:**

January 13, 2015

Speaker: Dawn Cameron, County Transportation Planner, Santa Clara County RDA

Topic: *"Expressway Plan 2040 and Circulation & Mobility Element"*

Attendance: 53

Location: Flames Eatery & Bar, San Jose

February 10, 2015

Speaker: Mark Fantozzi, AECOM

Topic: *"SFO Runway Safety Area Improvements"*

Attendance: 42

Location: Farmers Union, San Jose



March 10, 2015

Speaker: Nuria Fernandez, General Manager, VTA

Topic: *"The Future of VTA"*

Attendance: 77

Location: Scott's Seafood, San Jose



April 14, 2015

Speaker: Ratna Amin,  
Transportation  
Policy Director,  
SPUR

Topic: *"Freedom to  
Move – How the  
VTA can create  
better  
transportation  
choices in the South  
Bay"*

Attendance: 41

Location: Scott's  
Seafood, San Jose



May 14, 2015 –  
Joint meeting with  
SF Bay ITE

Speaker: Rafael  
Bolon, SamTrans

Topic: *"San Bruno  
Grade Separation  
Project"*

Attendance: 40

Location: Donato  
Enoteca Restaurant,  
Redwood City

