



UNIVERSITY OF WASHINGTON

November 21st, 2016

Re: 2017 RFP for the Data Collection Fund

Dear Amit M. Kothari:

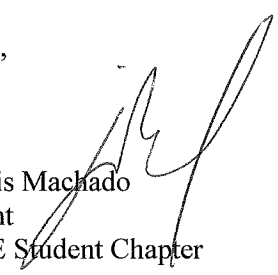
Please find enclosed the Institute of Transportation Engineers at University of Washington Student Chapter's (ITEUW) proposal for the ITE Western District Data Collection Fund. In this project, we will collect data for parking demand and trip generation analysis at the Wallingford Inn in the vibrant and growing mixed use Wallingford neighborhood.

The University of Washington ITE Student chapter will incorporate data collection into the coursework of the existing Traffic Engineering Fundamentals class. Data collection and reporting efforts will be coordinated by ITE student chapter vice president Secretary Anna Bovbjerg, treasurer Wenbo Zhu, and myself. Professor Yinhai Wang will direct our work as faculty advisor, and Pablo Para will provide assistance as our professional mentor. This project will help to fund ITE student chapter activities for the upcoming academic year.

The study site identified for data collection represents a special and uniquely situated land use (i.e., Resorts) that has not been well covered by the latest version of ITE's *Trip Generation*. The University of Washington ITE chapter is excited about the possible applications of this data and, if selected, we are confident that we can provide quality data and a concise, yet thorough, summary of our work.

Thank you for considering our proposal for funding.

Regards,

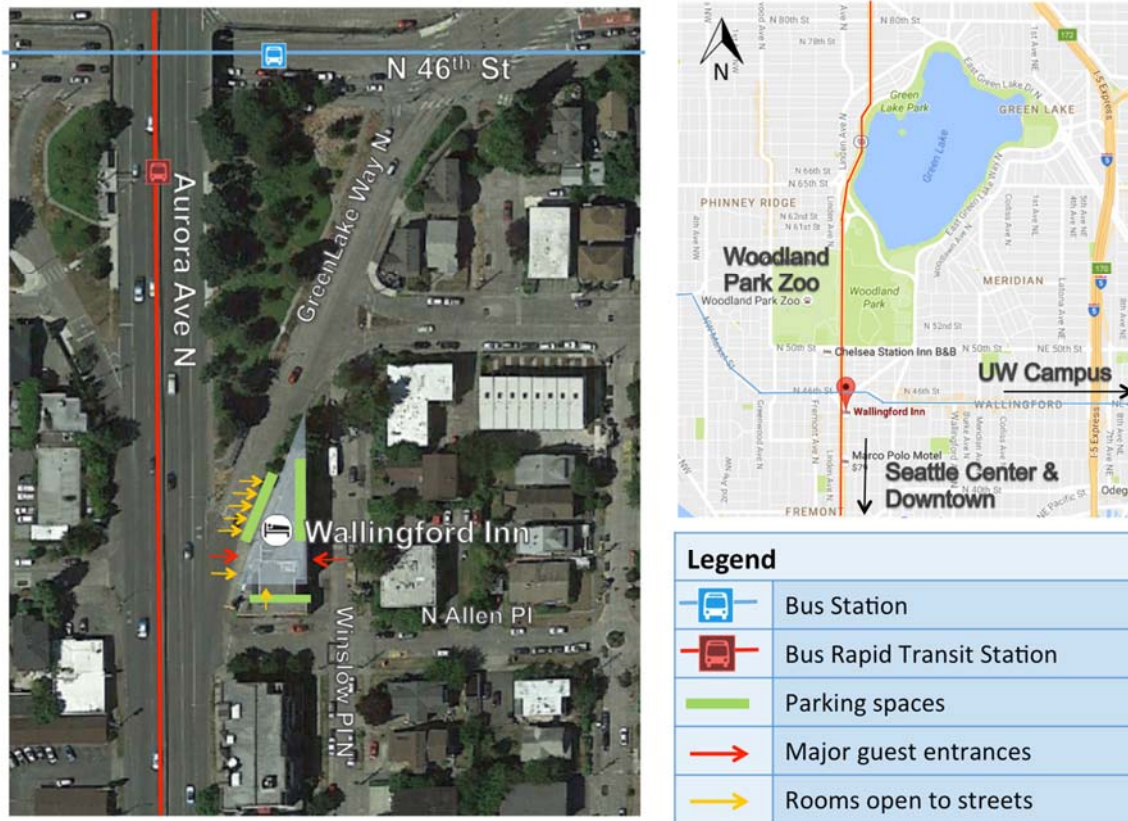
  
Jose Luis Machado  
President  
UW ITE Student Chapter

## 1. DATA COLLECTION PROPOSAL SCOPE:

The Hotel Wallingford Inn in the neighborhood of Wallingford Seattle and within 0.3 miles of the Woodland Park Zoo has been identified for the purpose of the data collection project. The ITE UW student chapter has obtained permission from the property owners and will make a single grant effort (80 hours of work) to finish this project.

The study site is at 4450 Green Lake Way N, Seattle, WA 98103. The land use is a multi-story motel with both sheltered and unsheltered parking stalls, as well as adjacent on-street parking spaces. The hotel is located at a major cross roads and transit routes that provide access in the four cardinal directions. The Bus Rapid Transit Line E travels on Aurora Ave N connects the location to areas such as the Downtown and touristic attractions in Seattle Center. Bus route 44 travels East-West on N 46th St. and connects this location with the UW Campus and the Ballard Neighborhood.

The hotel gross floor area is 13,900 sq ft. There are two major guest entrances (one of which is the front desk) and seven guest rooms are directly open to the streets. The hotel includes 26 rooms, 32 beds and 24 parking spaces including customer parking and on-street parking on side streets. The layout of the data collection site is illustrated in the picture below.



Data will be collected in 15-minute intervals from 7 am to 7 pm, and this will involve a total three days of collection work including two weekdays and one day of weekends. The time periods were selected because they represent typical weekday traffic as well as weekend deviation. Three specific data types will be collected:

### Trip generation data

- total count of motor vehicle trips, including passenger cars, motorcycles, and large commercial vehicles
- separate counts for trucks, motorcycles, bicycles, and pedestrians
- number of transit trips

### Parking demand

- number of observed parking spaces (including parking stalls owned by the hotel and parking spaces on the adjacent streets) occupied in each 15-minute interval
- separate counts for bicycle parking, motorcycle parking, passenger car parking, and large commercial vehicle parking

Data will be collected by student ITE members and students in a University of Washington undergraduate transportation class, *CEE 327: Traffic Engineering Fundamentals*. These students will receive credit for the assignment, in which they will

have the opportunity to participate in traffic data collection processes by observing trip generation, parking demand, and alternative transportation demand at the proposed location. Data will be collected and reported on ITE-provided forms as stated in the RFP.

**2. MENTORING:**

Pablo Para of City of Auburn will serve as our mentor during the ITEUW’s data collection efforts. As a Professional Engineer and also a Professional Traffic Operations Engineer, Mr. Para has great professional experience to help guide students and answer questions as needed. Professor Yin Hai Wang, an ITE member and a faculty advisor at the University of Washington, will guide students on data collection methods and oversee progress of the project.

**3. GRANT SCHEDULE:**

<b>Tasks</b>	<b>Deadline Dates</b>
1. Development of Work Plan	Dec. 17, 2016 ~ Jan. 22, 2017
2. Data Collection	Feb. 1, 2017~ Feb. 26, 2017
3. Submit Draft Abstracts, Summary Table, and Data Forms	Apr. 3, 2017
4. Submit Final Abstract, Summary Table, and Data Forms	May 8, 2017
5. Uploading data to the ITE’s online data submittal portal	May 28, 2017

**4. Level of Effort:**

		<b>Hours*</b>	
		<b>Person</b>	
<b>Data Collection</b>	UW CEE 327 Students/ ITE Student Members	68	
<b>Ground Supervision</b>	Wenbo Zhu, Anna Bovbjerg, and Jose Machado	2	
<b>Project Supervision</b>	Pablo Para	3	
<b>Data Processing</b>	UW ITE Student Officers/Members	3	
<b>Documents Elaboration</b>	Wenbo Zhu, Anna Bovbjerg and Jose Machado	4	
		80	<b>Total</b>

**5. PROJECT MANAGEMENT:**

Being selected for this project will also provide the ITEUW Student Chapter with funds necessary to support student trips to several conferences (e.g. ITE Student Night and the ITE Traffic Bowl), arrange field visits and invite various speakers to share their practical experiences. Also, the funds will support our student recruitment activities such as printing materials and rental of recreational spaces in UW. Once granted, the funds should be sent to the UW ITE treasurer. (Payable to “UW ITE”, Address: Box 352700, 101 More Hall, University of Washington, Seattle WA 98195). Further contact information:

Student Coordinator	Wenbo Zhu, UW ITE Treasurer	Box 352700, Dept. of Civil and Environmental Engineering, University of Washington, Seattle, WA 98195-2700 (206) 617-0494 wbzhu@uw.edu
Student Coordinator	Anna Bovbjerg, UW ITE Secretary	Box 352700, Dept. of Civil and Environmental Engineering, University of Washington, Seattle, WA 98195-2700 anna.bovbjerg@gmail.com
Student Coordinator	Jose Machado, UW ITE President	Box 352700, Dept. of Civil and Environmental Engineering, University of Washington, Seattle, WA 98195-2700 (206) 465-0752 jlmaleon@uw.edu
Professional Mentor	Pablo Para, PE, PTOE.	City of Auburn 25 West Main Street. Auburn, WA 98001-4998 (253) 876 - 1958 ppara@auburnwa.gov
Faculty Member	Dr. Yin Hai Wang, Professor	Box 352700, Dept. of Civil and Environmental Engineering, University of Washington, Seattle, WA 98195-2700 (206) 616-2696 yinhai@u.washington.edu

**6. AGREEMENT TO HOLD HARMLESS AND COPYRIGHT TRANSFER:**

The ITE University of Washington Student Chapter holds harmless and indemnifies the ITE Western District from any and all liability associated with the conduct and completion of this proposal, data collection and associated activity.