



Leucadia Streetscape

Geoffrey Retemeyer, PE, TE

Joanne Tyler, PE, PLS, QSD

Michael Baker International, Carlsbad CA

About Geoff Retemeyer

Brief History:

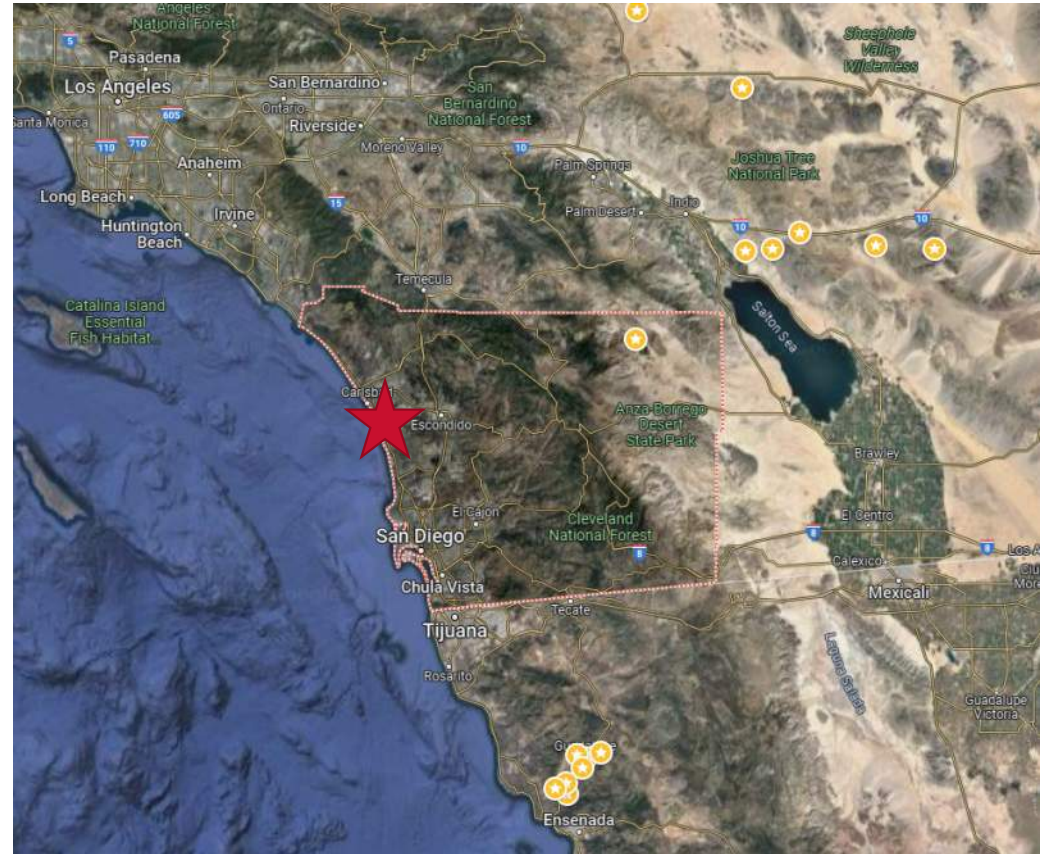
- Born and raised in Central Valley (Turlock), CA
- Graduated San Diego State University, 2015
- Living in San Diego
- Married May 2023
- Enjoy Traveling, Concerts, Golf



Leucadia Streetscape

Presentation Outline;

1. Leucadia Streetscape Overview
2. Phase 1 (Segment A2) Project
 - a. Project Background
 - b. Multi-modal improvements
 - c. Drainage improvements
 - d. HSIP improvements
 - e. Construction Challenges
3. Segment B+C Mobility Enhancements Project
4. Segment C and Leucadia Drainage Project
5. Questions



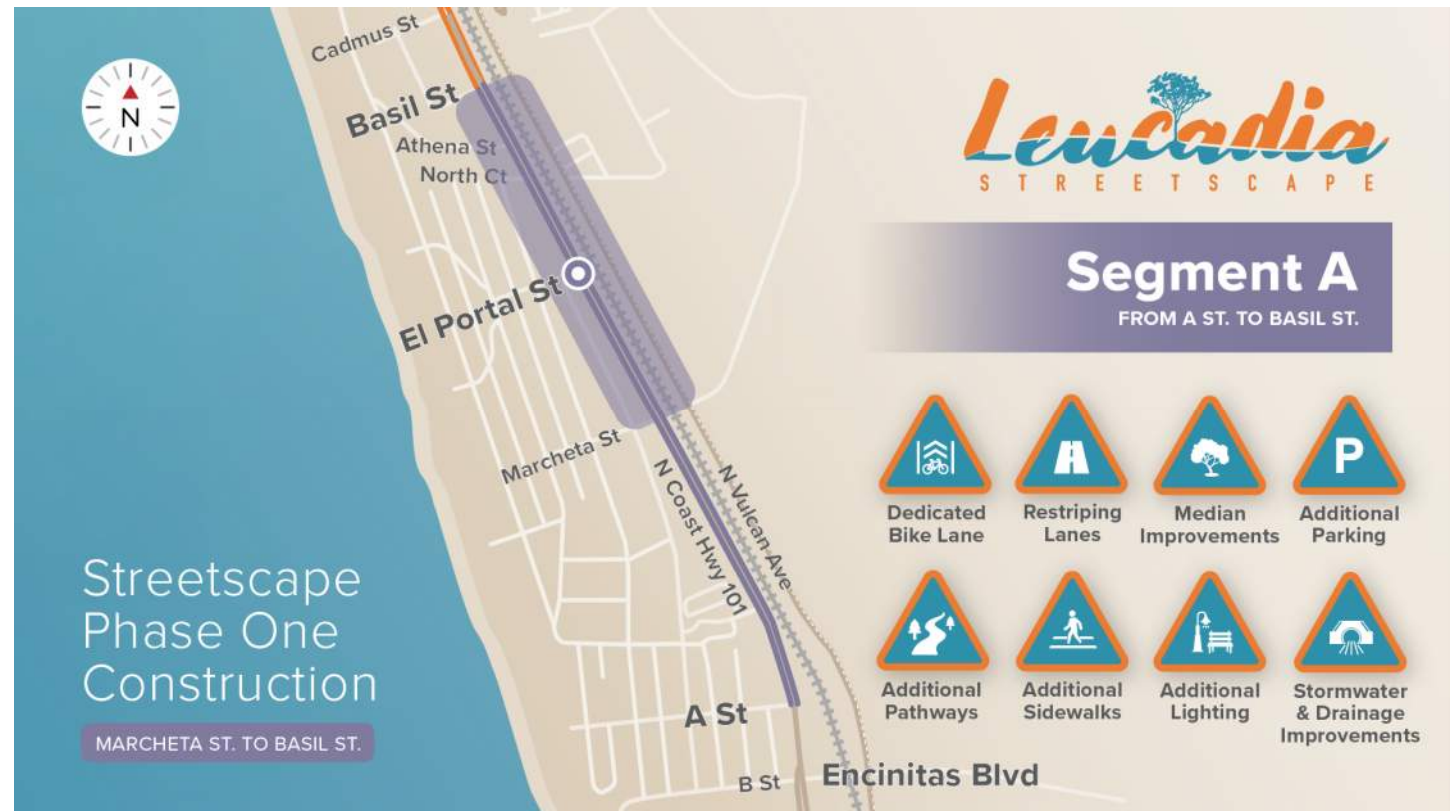
Leucadia Streetscape

- 2.5 Mile N-S Corridor in City of Encinitas located on northern coast of San Diego County.
- MBI's role is PA&ED, PS&E, and Construction Support for complete street improvements on entire corridor



Phase 1: Project Background

- 100% Plans for entire corridor finished April 2020
- Project broken out into phases due to funding uncertainty.



Phase 1: Project Background

- Improvements in conjunction with RR undercrossing (TY-Lin)



Phase 1: Multi-Modal Improvements

- Wider sidewalks
- Crosswalk improvements
- Landscaping and street furniture
- Dedicated green buffered bike lanes
- Enhanced Bus Stops
- Parking improvements



Phase 1: Multi-Modal Improvements

- Wider sidewalks
- Crosswalk improvements
- Landscaping and street furniture
- Dedicated green buffered bike lanes
- Enhanced Bus Stops
- Parking improvements



Phase 1: Multi-Modal Improvements

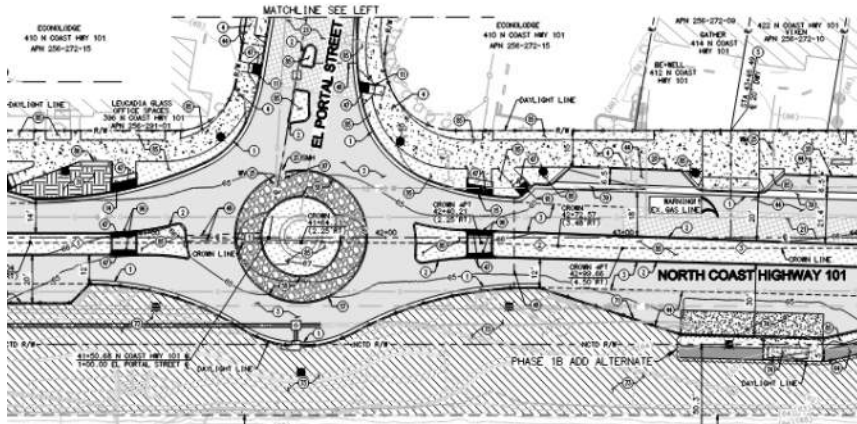
- Wider sidewalks
- Crosswalk improvements
- Landscaping and street furniture
- Dedicated green buffered bike lanes
- Enhanced Bus Stops
- Parking improvements



Phase 1: Roundabout Improvements

Focal point of project adjacent to El Portal RR Undercrossing

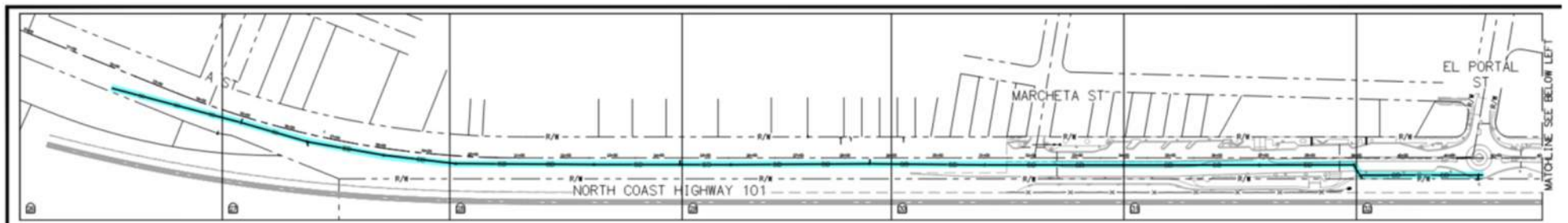
Horizontal and vertical geometrics designed in accordance with NCHRP Report 672 standards and performance checks.



Phase 1: Drainage Improvements

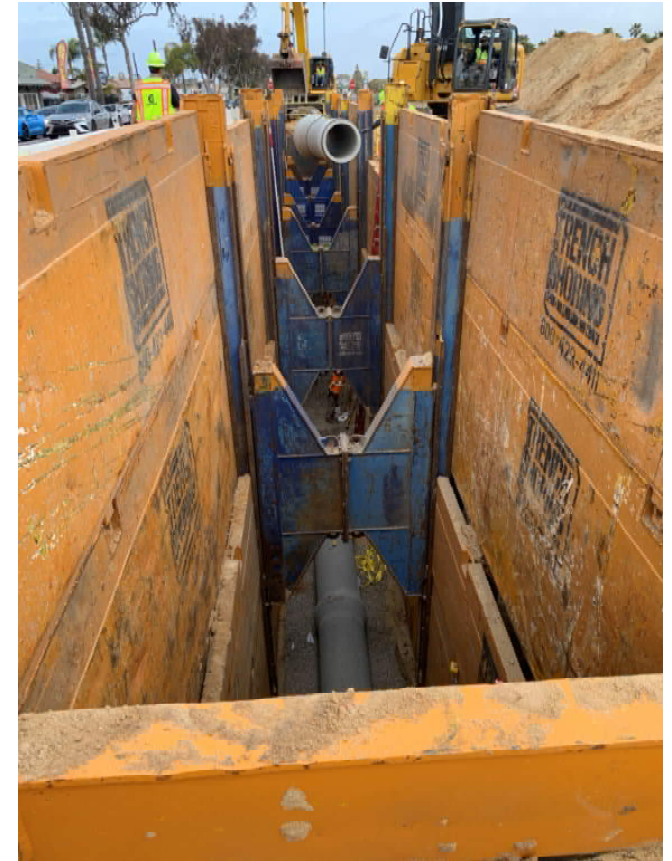
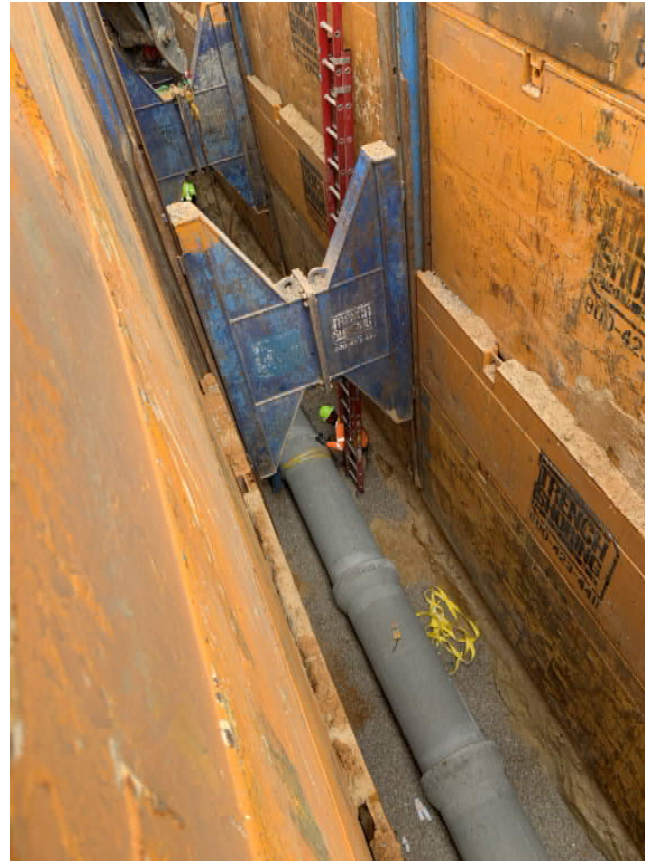
El Portal Storm Drain

- 24" RCP
- Depths up to 25'



Phase 1: Drainage Improvements

- El Portal Storm Drain



We Make a Difference



Phase 1: HSIP Improvements

- HSIP (Hwy Safety Imp Project) Funding: Pedestrian Crossings at North Court & Diana Street

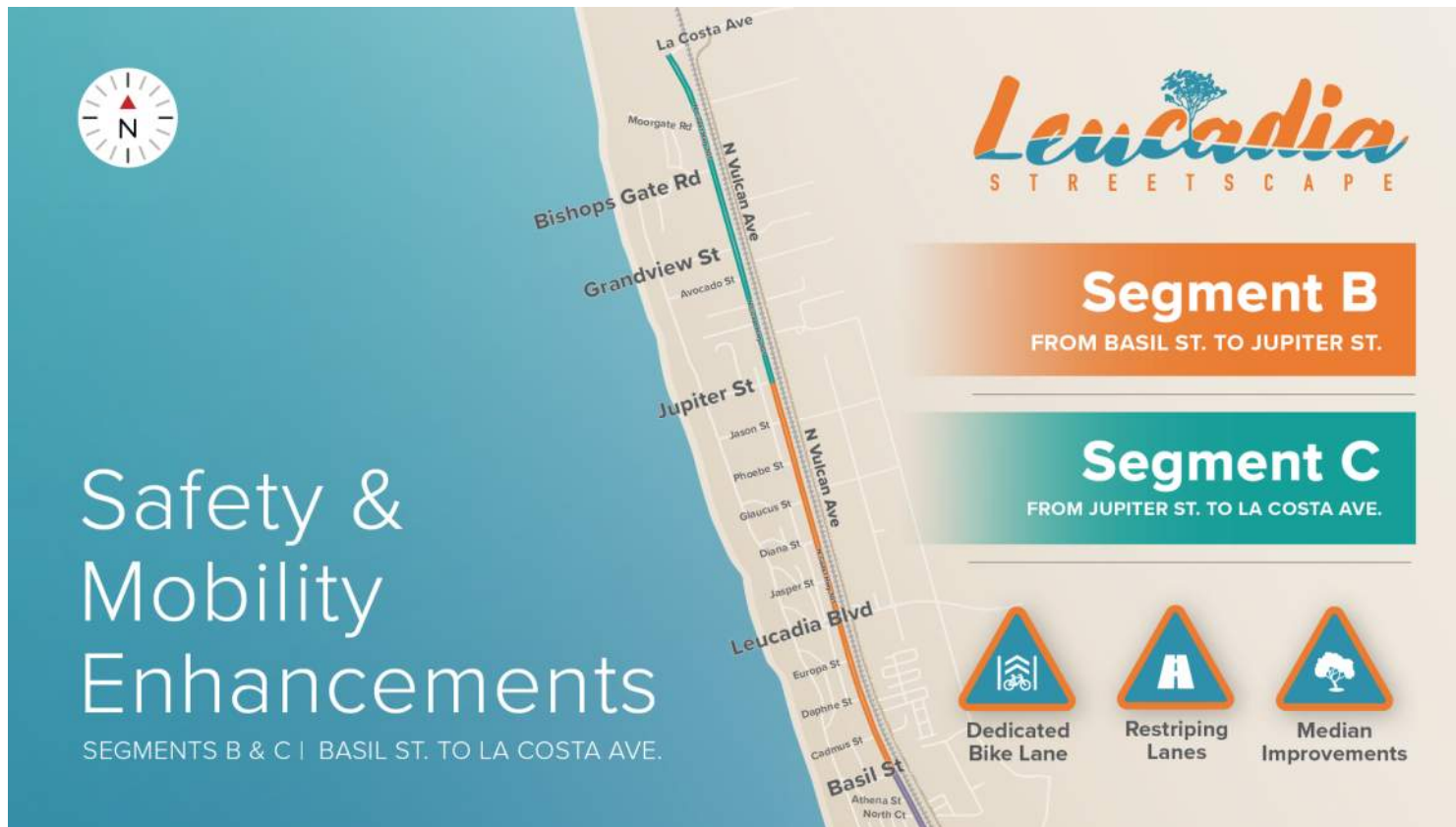


Phase 1: Construction Challenges

- Roundabout traffic control
- Managing business access/parking needs with construction schedule
- Storm Drain;
 - Unforeseen utilities
 - “sugar sand” material
 - Constructed started upstream to account for groundwater
- Construction Completed Spring 2022



Segment B+C Safety and Mobility Enhancements



Segment B+C Safety and Mobility Enhancements



- Dedicated Bike Lanes implemented for entire corridor
- Minor median improvements to accommodate cross-section and increase LT storage

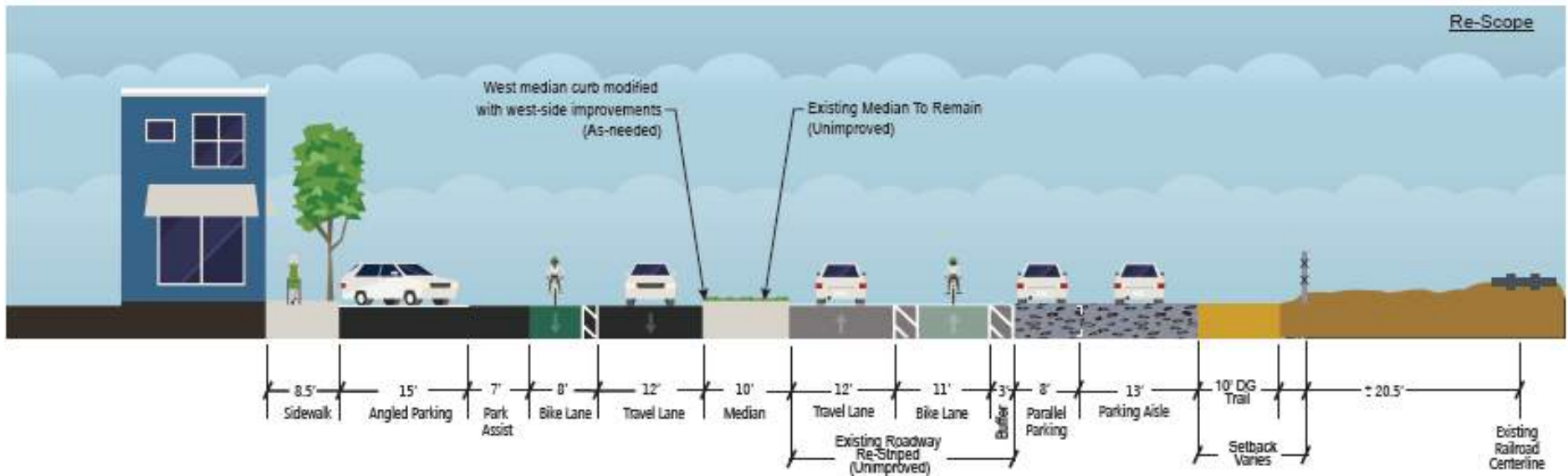


Segment C and Leucadia Drainage Improvements

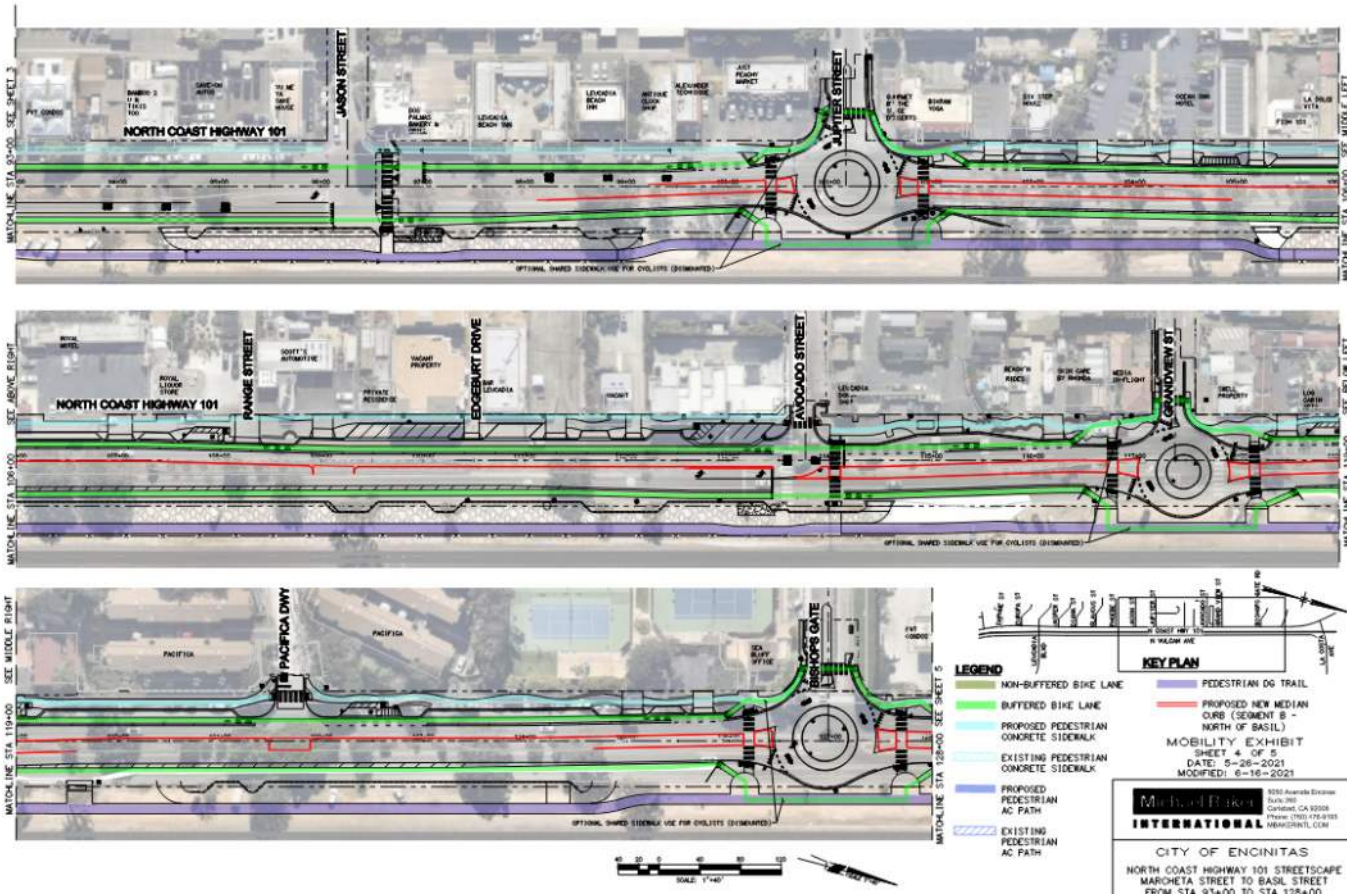
- Project currently in pre-construction phase.
- Anticipated to start construction early 2024



Segment C and Leucadia Drainage Improvements



Segment C and Leucadia Drainage Improvements



Segment C and Leucadia Drainage Improvements

Existing Site Conditions:



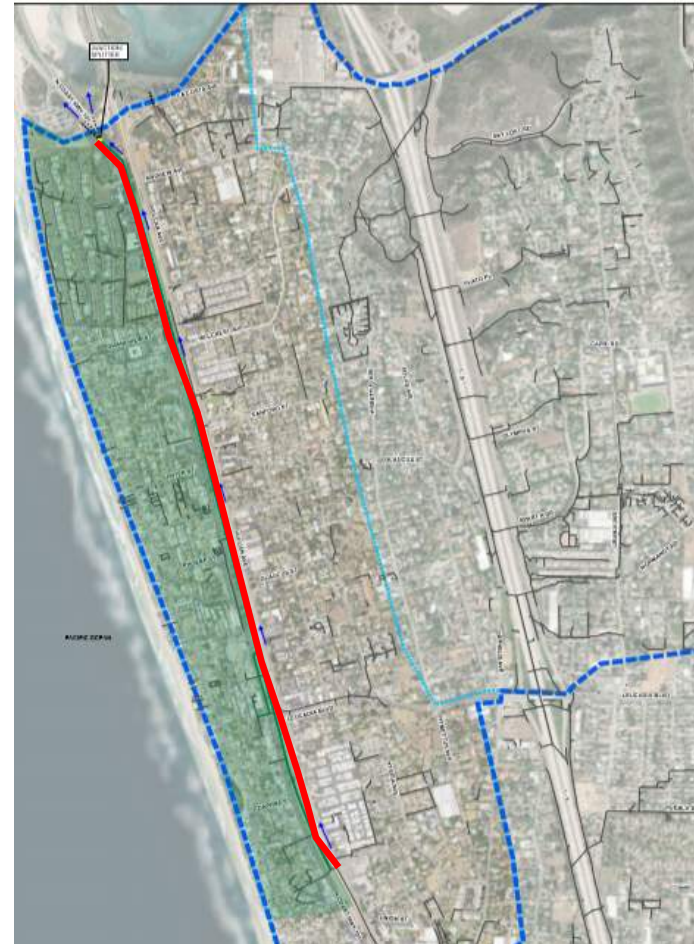
Segment C and Leucadia Drainage Improvements

Installation:

- Open-cut excavation utilizing a trench box.
- Construction footprint Approx. 10 feet wide and up to 35 feet in depth.
- 18" RCP ~ 1,640 LF (depth of 5 to 35 feet)
- 24" RCP ~ 2,145 LF (depth of 5 to 35 feet)
- 60" RCP ~ 3,345 LF (depth of 15 to 25 feet)
- 66" RCP ~ 260 LF (depth of 25 to 35 feet)

Approx. 1.6 miles of storm drain along N. Coast Hwy 101 (ultimate condition)

0.4 miles being constructed with Segment C





We Make a Difference

Questions?

