

CALTRANS- DISTRICT 11 WRONG WAY DRIVING PREVENTION

EXCELLENCE IN TRANSPORTATION WESTERN DISTRICT PROJECT

SAFETY

OCTOBER 25, 2023



CALIFORNIA DEPARTMENT OF TRANSPORTATION (CALTRANS) MAP



WRONG WAY DRIVING STATISTICS

FREEWAYS AND EXPRESSWAYS ONLY		
YEAR	WRONG WAY COLLISIONS	% COMPARED TO TOTAL ALL COLLISIONS
2014	193	0.0013
2015	210	0.0012
2016	239	0.0012
2017	233	0.0011
2018	229	0.0011
2019	248	0.0011

WRONG WAY DRIVING POTENTIAL CAUSES

Driving Under the Influence

Suicide

Distracted Driving

Way Finding Devices/Driver Confusion

Drivers Unfamiliar With Area

Elderly

Ramps Not Marked Clearly

Signs Issue

Ramp Design

Lack of Signs

Lack of Visibility



Caltrans

WRONG WAY DRIVING PREVENTION PILOT



Red retroreflective pavement markers (backside) resulted in a 44% to 64% reduction in reported wrong way events



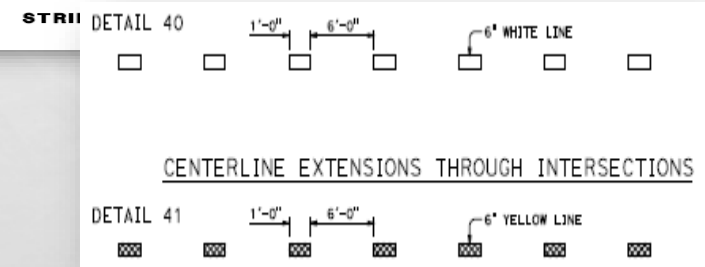
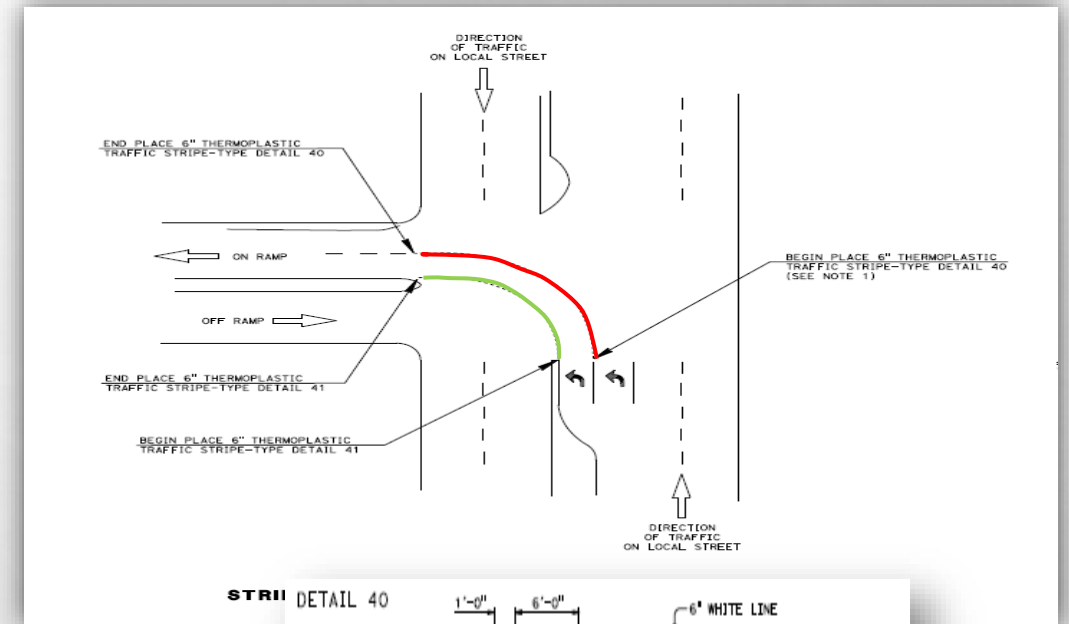
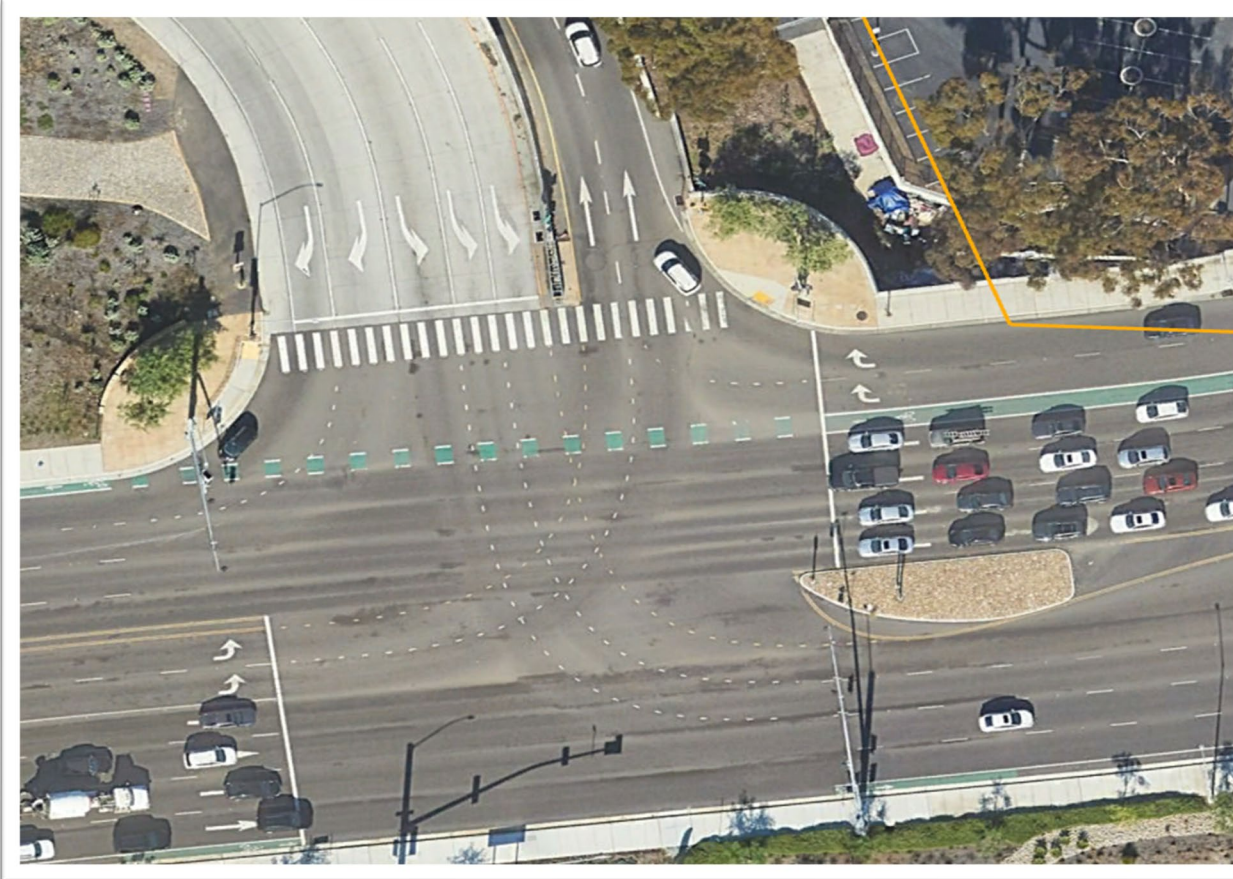
Blinking LED wrong way signs resulted in a 60% reduction in reported wrong way events



Advanced Detection and Notifications Systems – Approved and meets CA MUTCD requirements

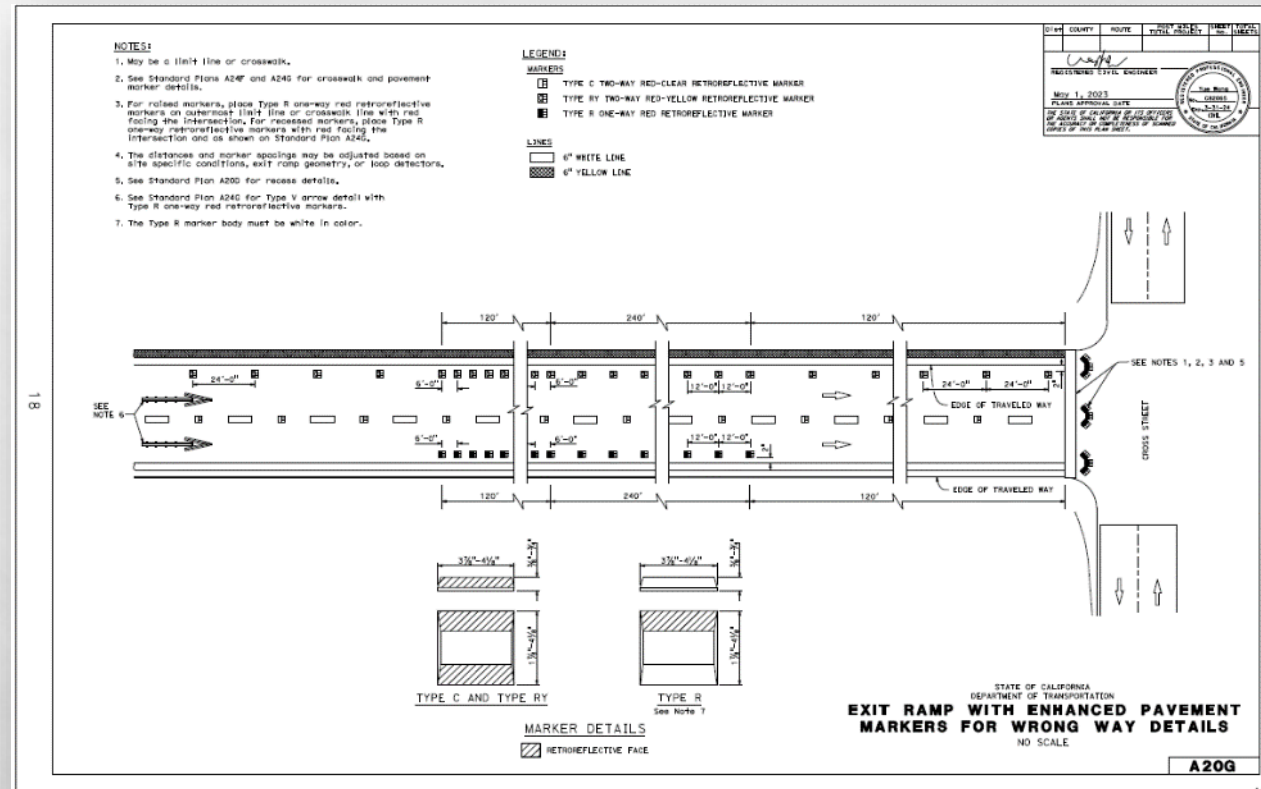


WW DRIVING COUNTERMEASURES STRIPING

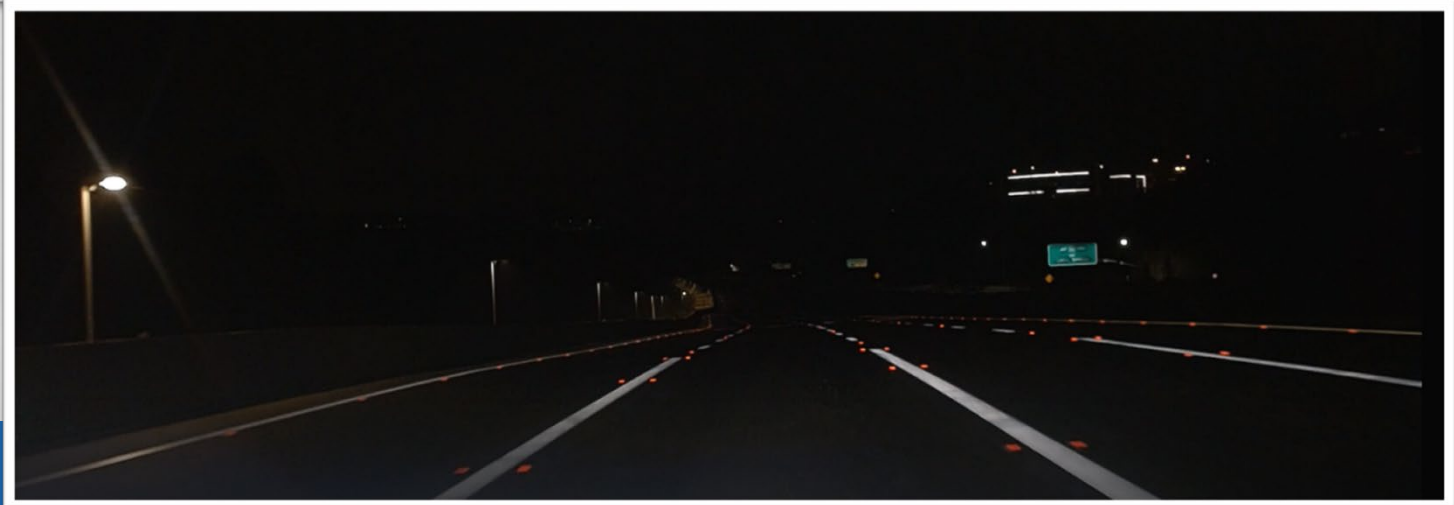
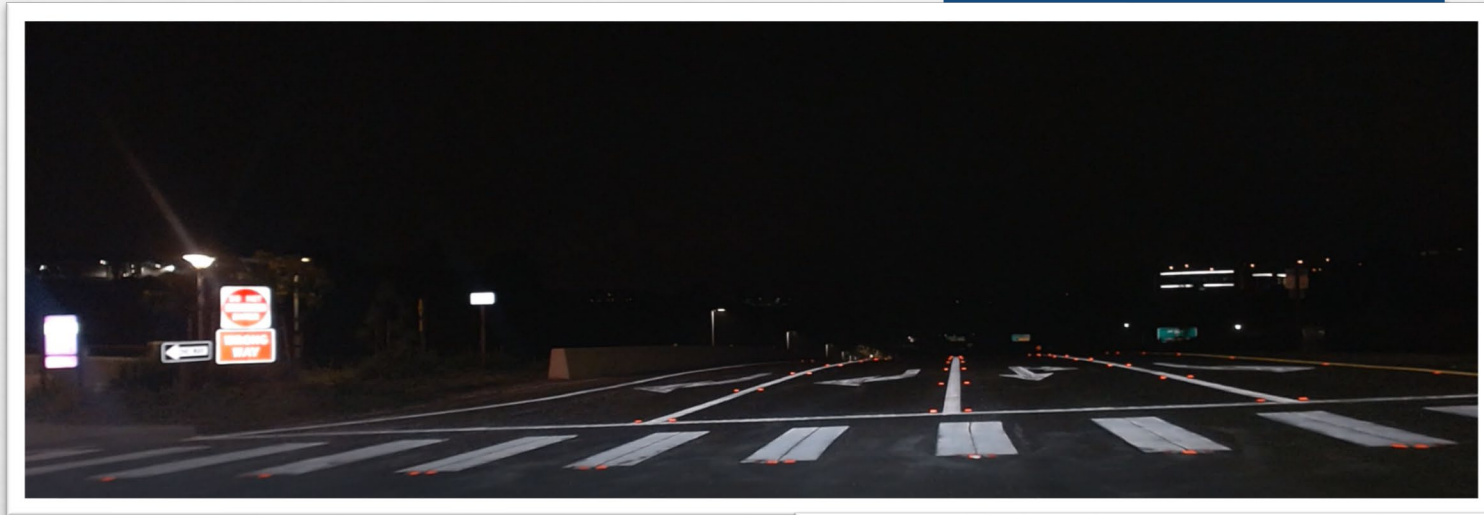


INTERSECTION STRIPING

EXIT RAMP MARKINGS STANDARDS



WW DRIVING COUNTERMEASURES MARKINGS



WW DRIVING PREVENTION COUNTERMEASURE STATIC SIGNS



R3-1



R3-2



R3-18

24" X 24" FOR SINGLE LANE CONVENTIONAL ROAD
36" X 36" FOR MULTI-LANE CONVENTIONAL ROAD
48" X 48" OVERSIZED



R5-1



R5-1a



R6-1

R5-1 (48" X 48") & R5-1A(42 X30")- FREEWAY
R5-1 (36" X 36") & R5-1A(36"X24")- EXPRESSWAY
R6-1(54" X 18") -FREEWAYS AND EXPRESSWAYS

WW DRIVING COUNTERMEASURES LED SIGNS



LED BORDERED
WRONG WAY SIGNS

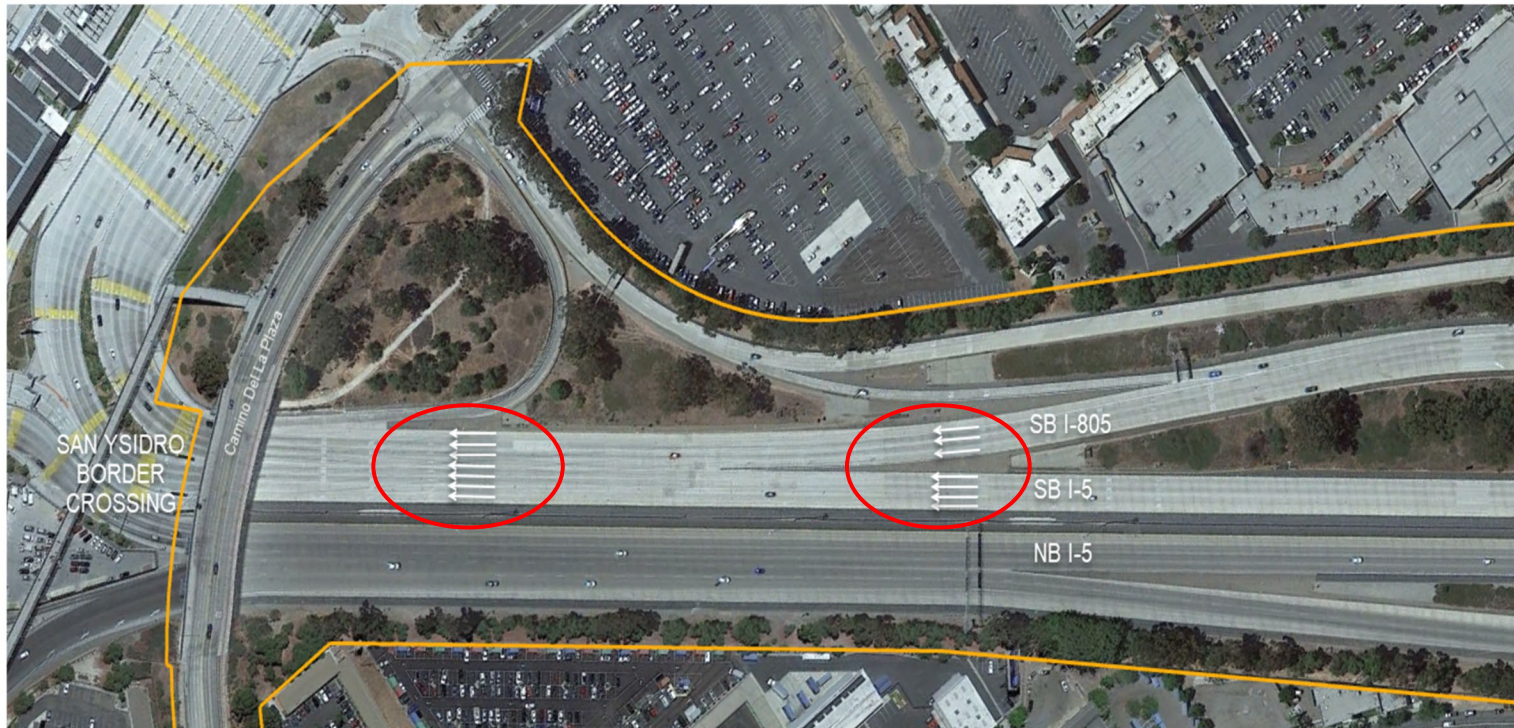
ADVANCED DETECTION & NOTIFICATION SYSTEMS TAPCO



DISTRICT WW DETECTION SYSTEM DISTRICT PILOT



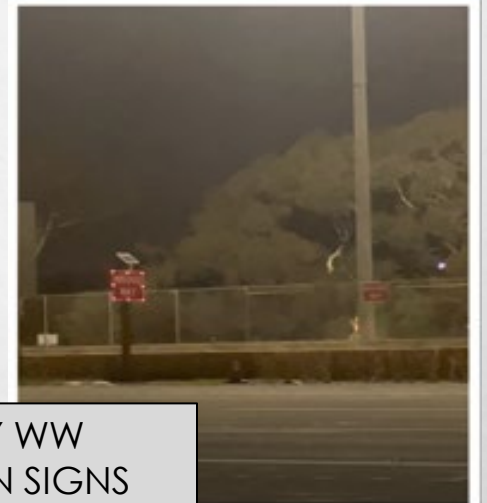
ADDITIONAL WW COUNTERMEASURES



FREEWAY TYPE V ARROWS

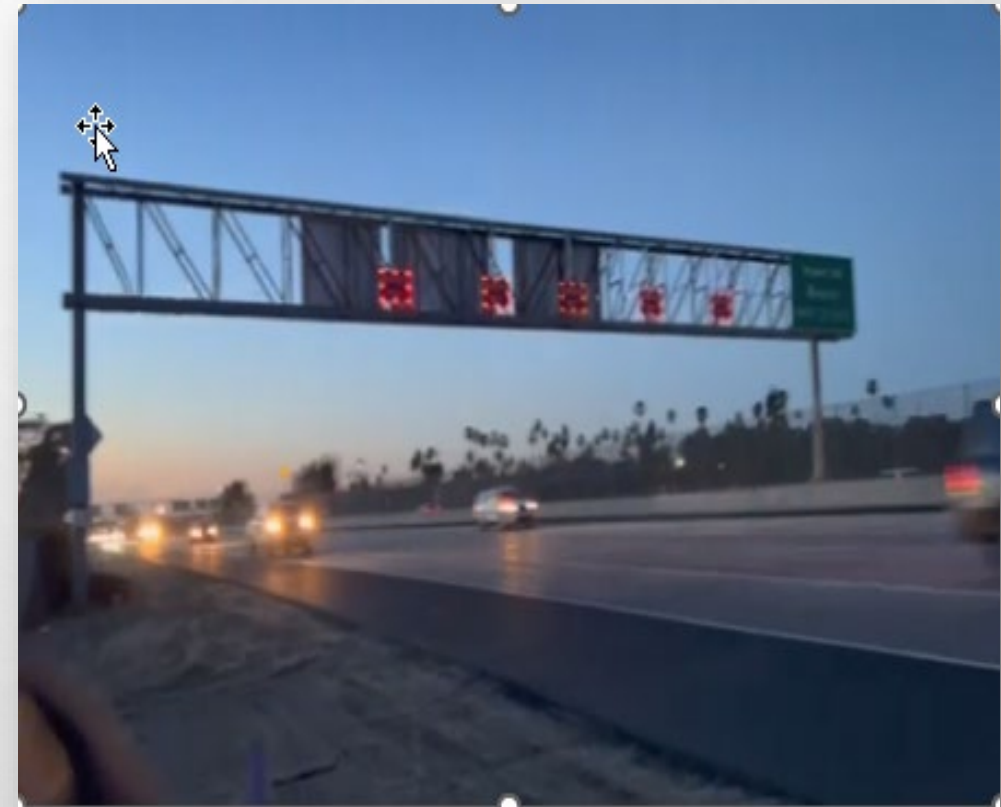


FREEWAY WW PREVENTION SIGNS



CONNECTORS WW PREVENTION SIGNS

ADDITIONAL WRONG WY COUNTERMEASURES



WW PUBLIC CAMPAIGN



QUESTIONS?



Contact

may.z.alsheikh@dot.ca.gov