



A Refreshed Major Corridor for Multimodal Users in Clackamas County, OR

Carl Olson (Clackamas County)
Pam O'Brien (DKS Associates)

Outline

- Project Overview
- Alternative Analysis
- Innovative Signal Design at Select Locations
 - Sunnyside & Stevens
 - Sunnyside & 9000 Block



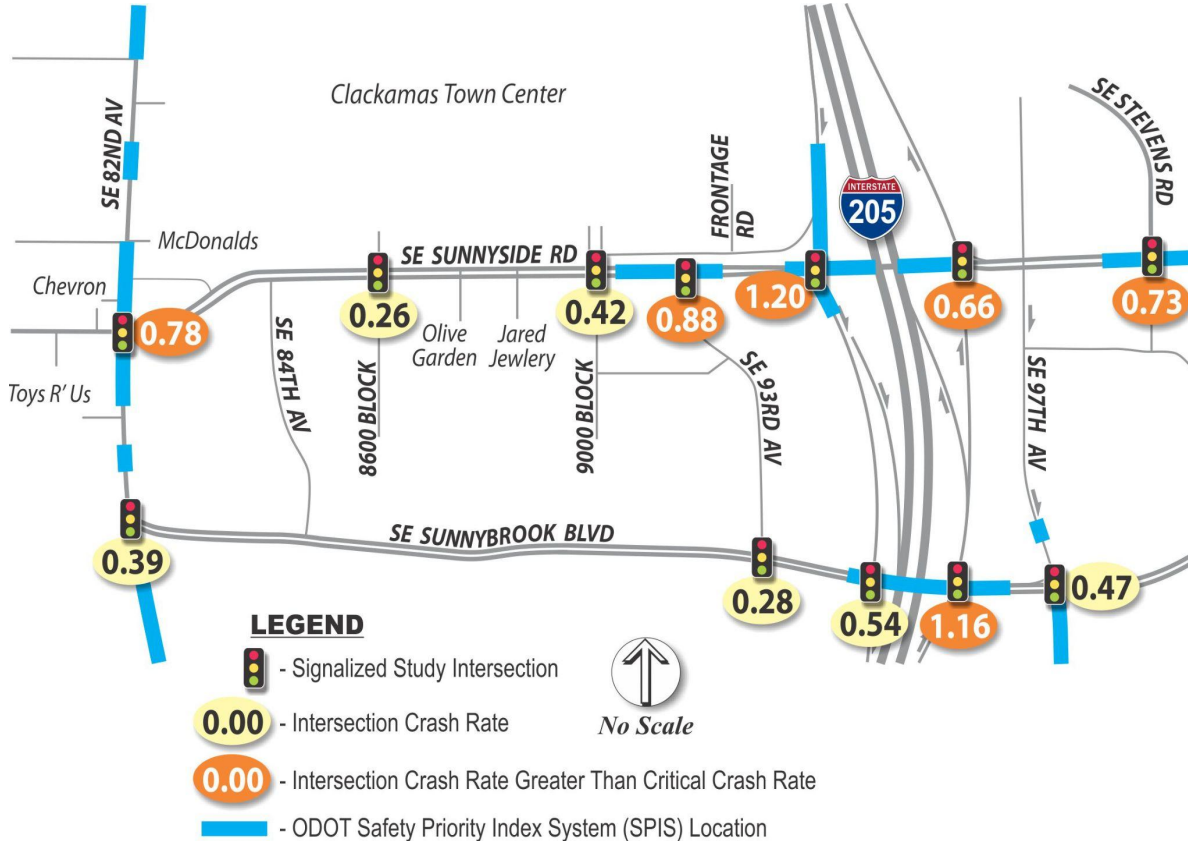
Project Overview



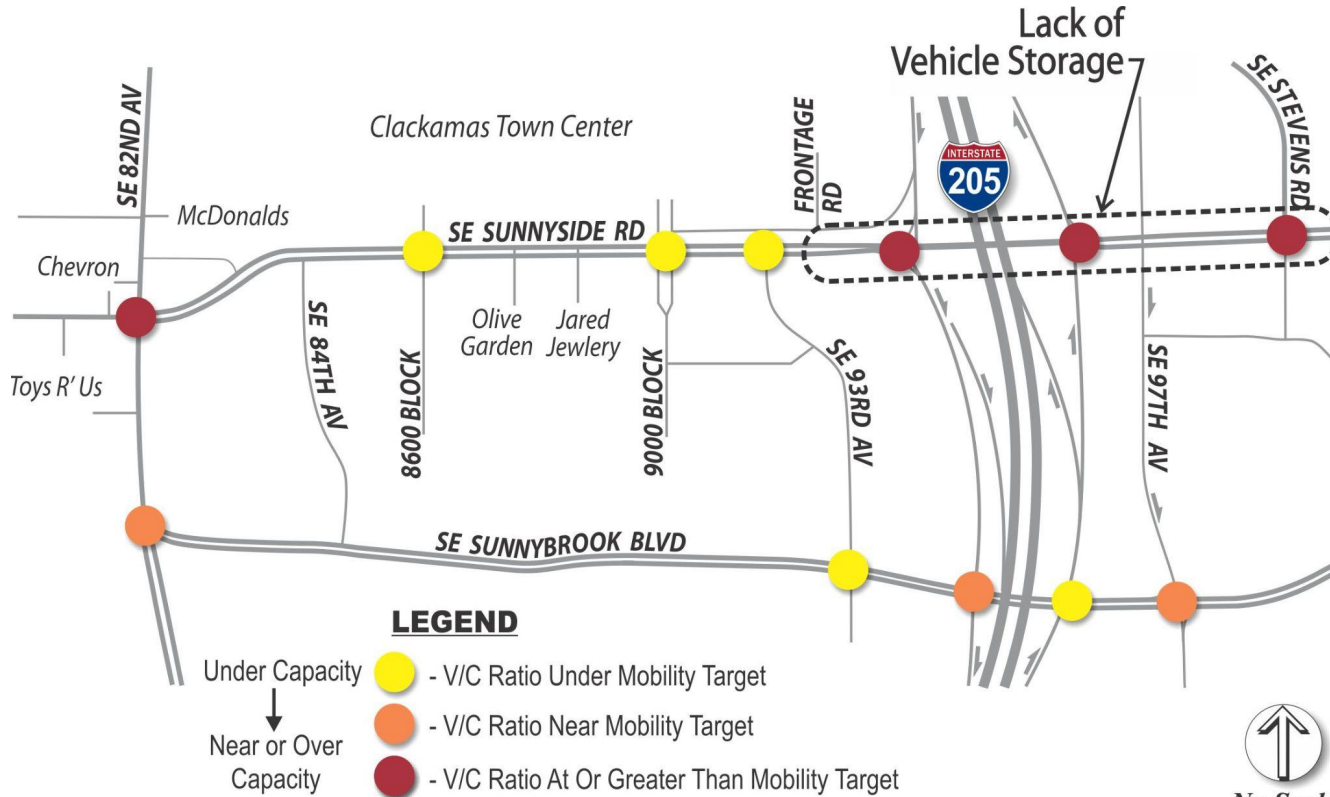
Project Overview - Needs



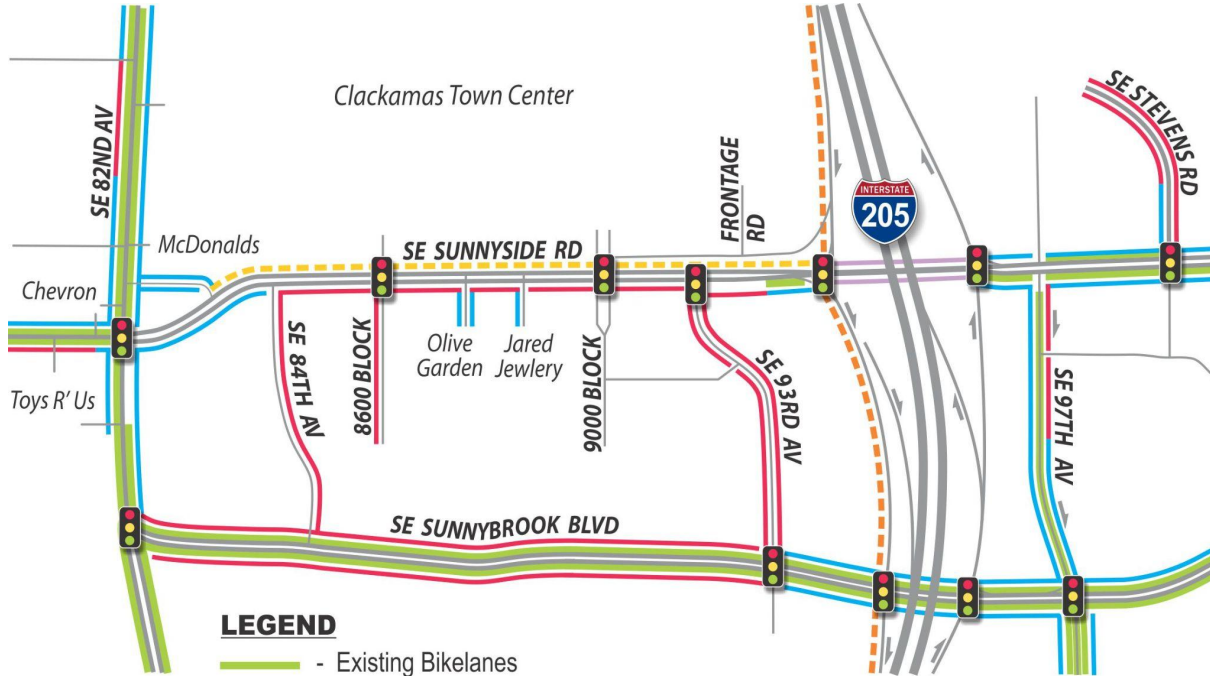
Project Overview - Needs (Safety)



Project Overview - Needs (Operational Performance)



Project Overview - Needs (Bike and Ped)



LEGEND

- Existing Bikelanes
- Existing Sidewalks (without a Buffer)
- Existing Sidewalks (with a Landscape Buffer)
- Existing Sidewalks (with a Concrete Barrier)
- I-205 Multi-use Path
- Multi-use Path



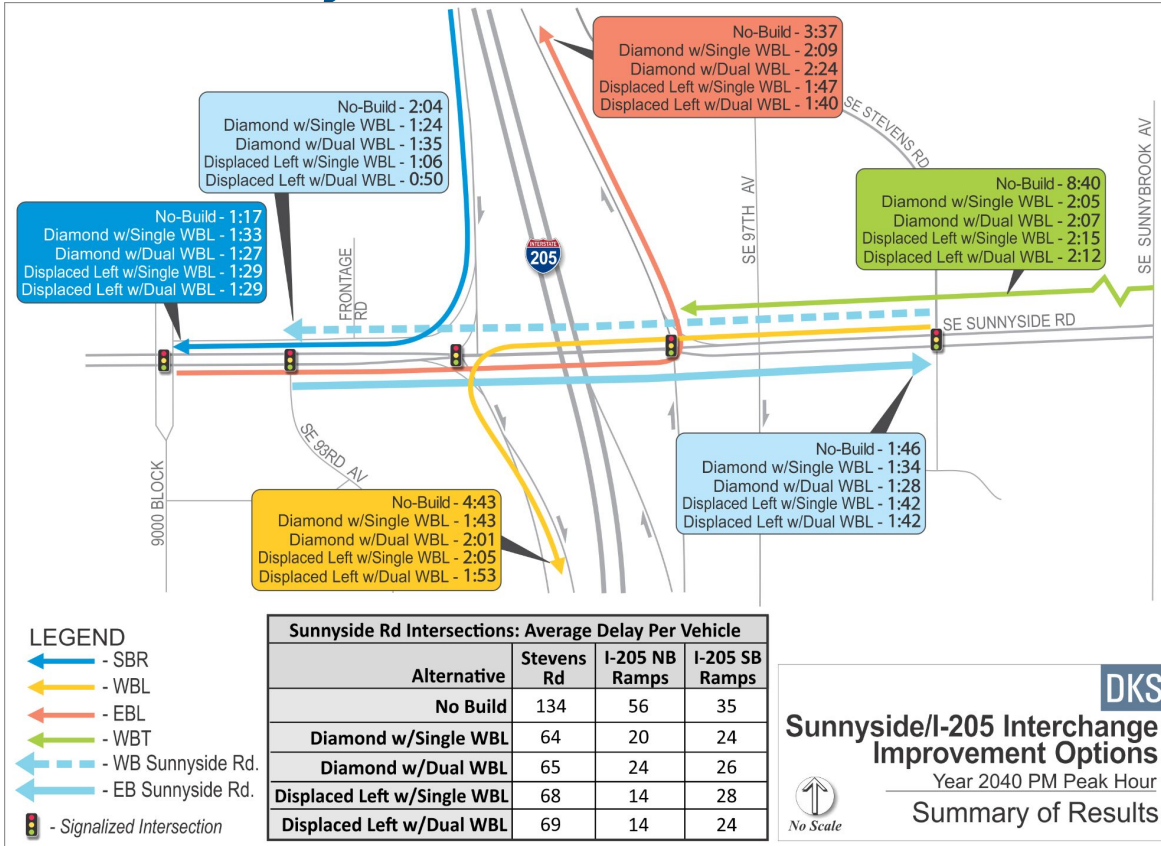
No Scale



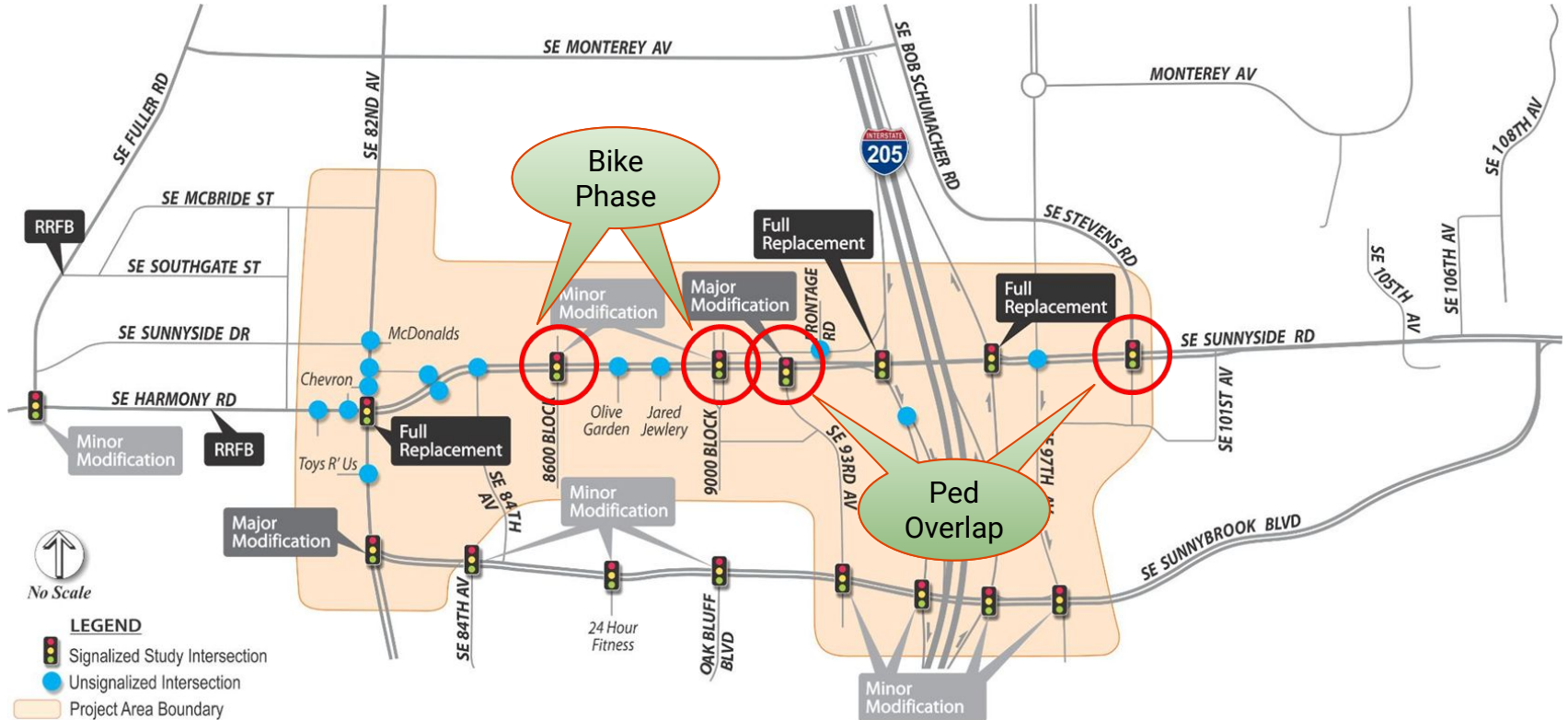
Project Overview - Goals

- Provide a safe and efficient transportation system
- Address needs of residents, businesses, and the public
- Balance different modes of transportation: motor vehicle, bicycle, pedestrian, transit, and freight

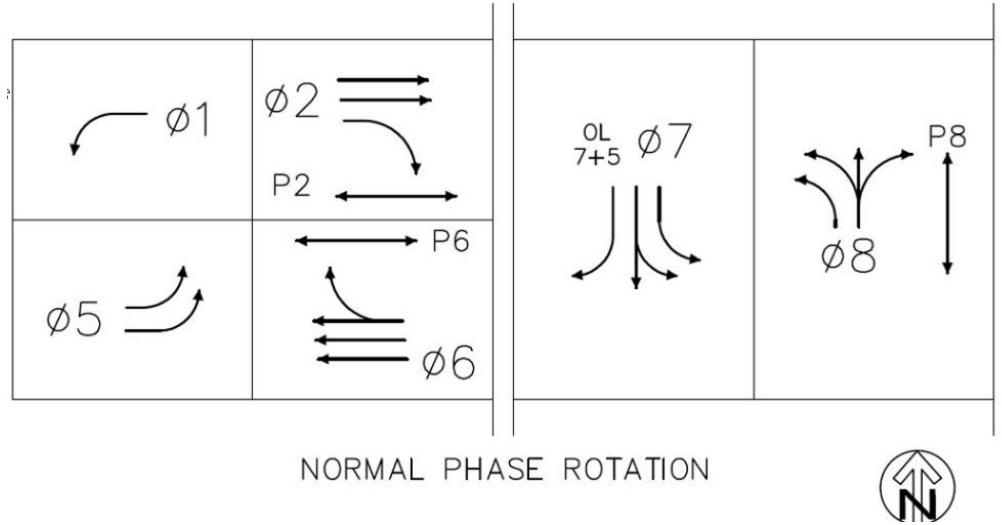
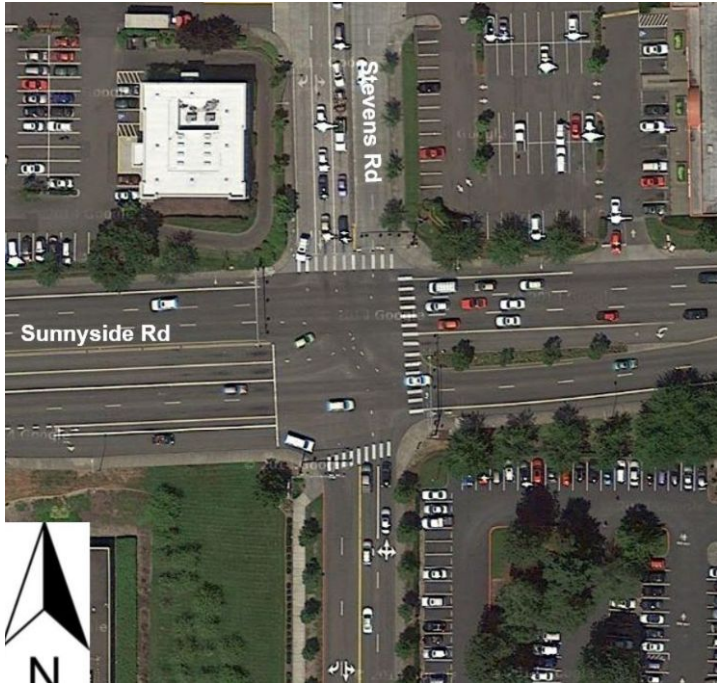
Alternative Analysis



Innovative Signal Design at Select Locations

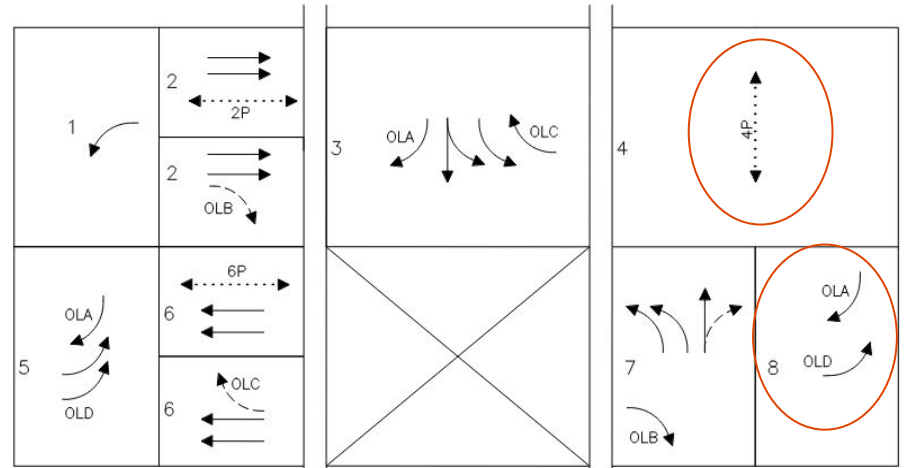
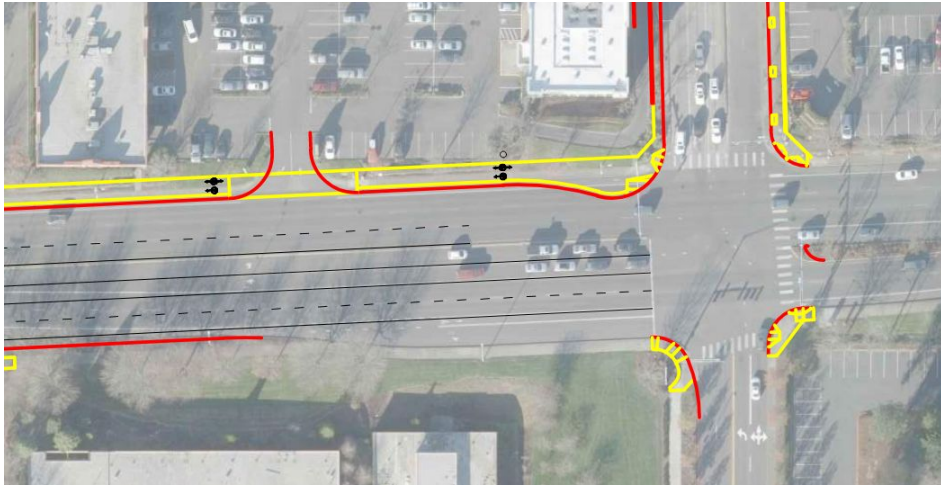


Sunnyside & Stevens Rd (Pre-Construction)



Side Street Split Phased
Phase 8 Pedestrian time was 36 seconds

Sunnyside & Stevens Rd (Pedestrian Overlap)



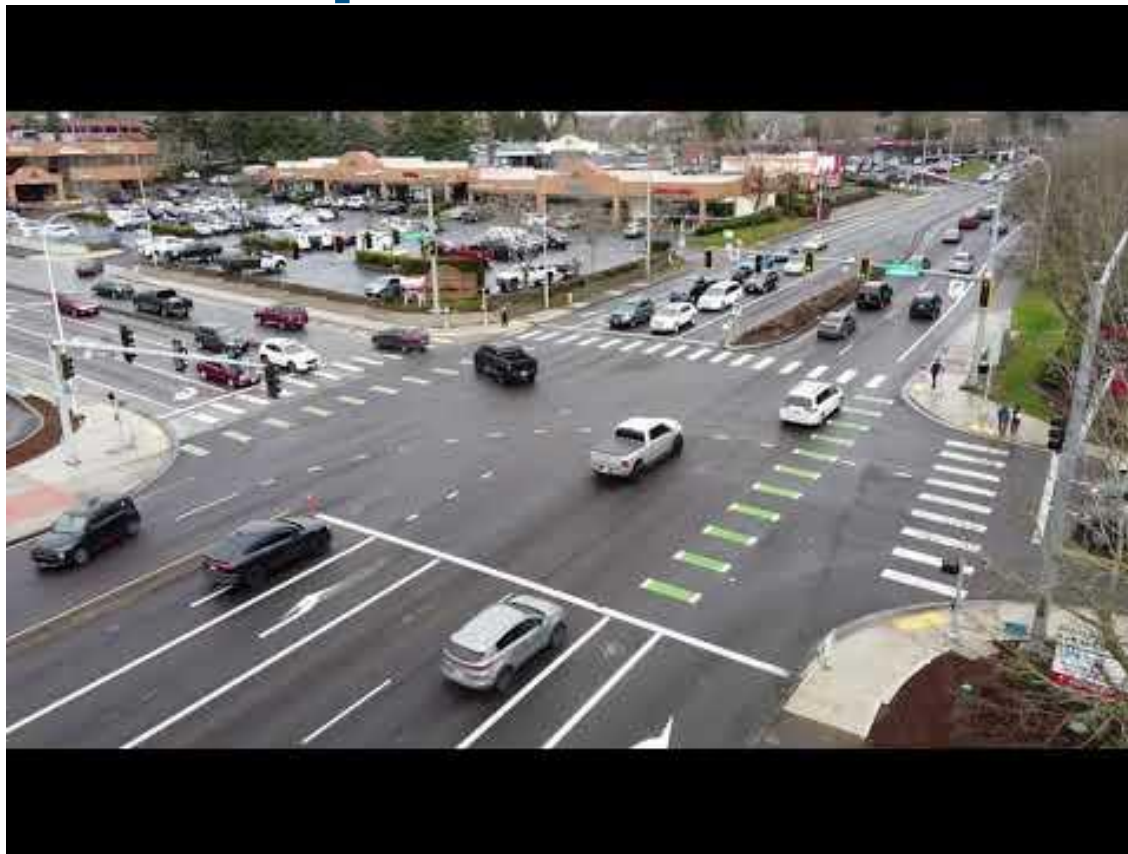
OLA = Ph.3+Ph.5+Ph.8
 OLB = Ph.2-Ph.2P+Ph.7
 OLC = Ph.6-Ph.6P+Ph.3
 OLD = Ph.5+Ph.8

Ph.8 is Dummy phase which times if Ph.4P is active and Ph.7 and Ph.4 gaps or max's out. Ph.3 is exclusive Phase.

OLA does not use FYRTA; GRTA during Ph.3, Ph.5, or Ph.8
 OLB uses FYRTA during Ph.2-Ph.2P and uses GRTA during Ph.7.
 OLC uses FYRTA during Ph.6-Ph.6P and uses GRTA during Ph.3.

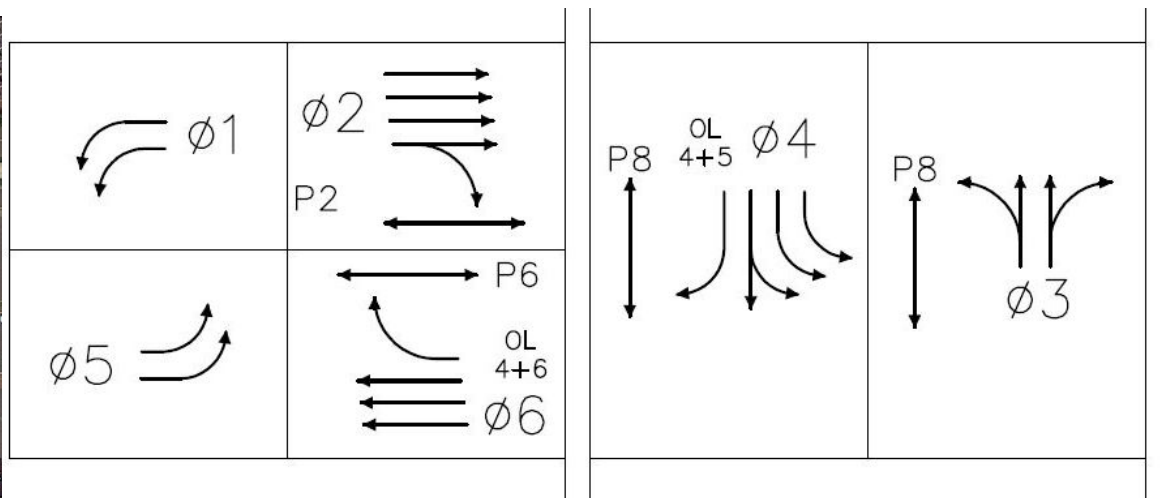
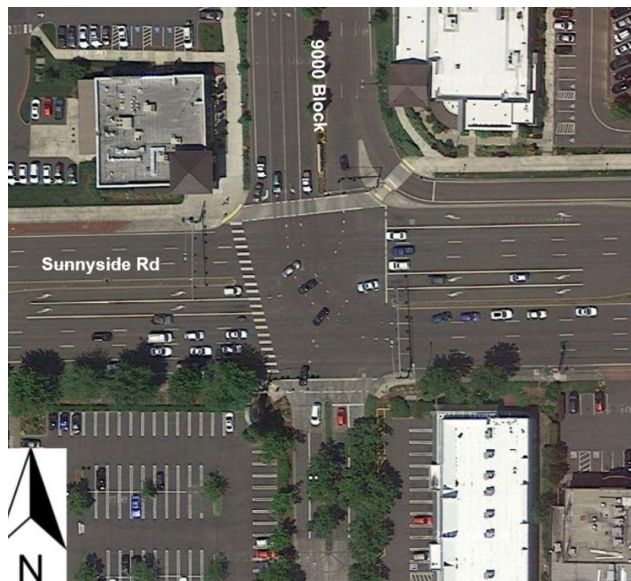
NORMAL PHASE ROTATION

Sunnyside & Stevens Rd (Operations In The Field)



<https://youtu.be/h-F3RDp3sdA>

Sunnyside & 9000 Block (Pre-Construction)



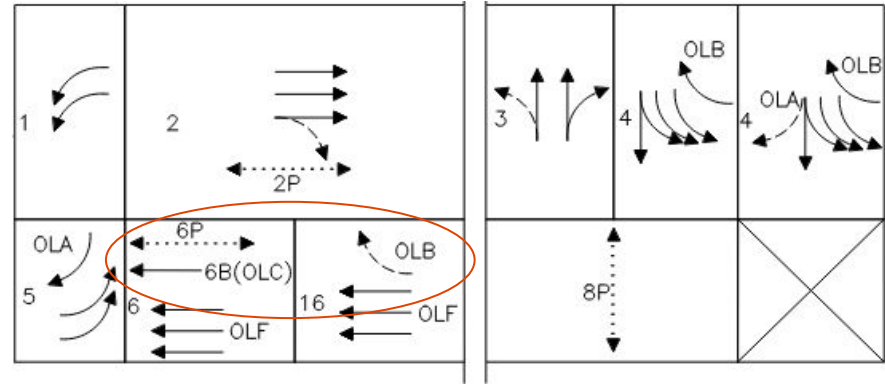
NORMAL PHASE ROTATION



Sunnyside & 9000 Block (Design Layout)



Sunnyside & 9000 Block (Exclusive Bike Phase, FYRTA, PTR)



- OLA = Ph.5+Ph.4-Ph.8P
- OLA = FYRTA DURING Ph.4-Ph.8P
- OLA = GRTA DURING Ph.5 (HARDWIRED)
- OLB = Ph.16+Ph.4
- OLB = FYRTA DURING Ph.16
- OLB = GRTA DURING Ph.4 (HARDWIRED)
- OLC = Ph.6B
- OLF = Ph.6+Ph.16

*PTR SIGN TO BE ACTIVE WHEN Ph.6B BIKE SIGNAL (OLC) IS GREEN OR YELLOW.

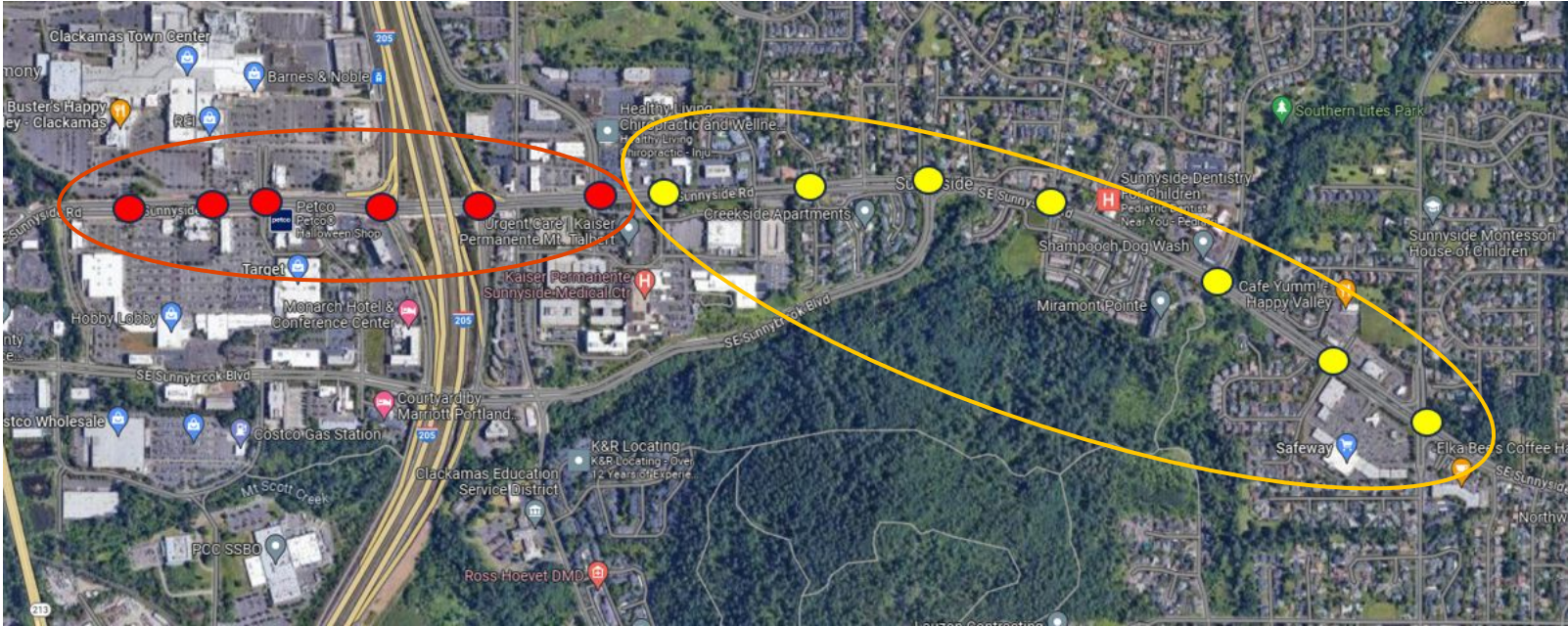
NORMAL PHASE ROTATION



Sunnyside & 9000 Block (Operations In The Field)



Regional Timing Impacts





Thank you!

Carl Olson, P.E., PTOE, ASEP
Senior Traffic Engineer
Clackamas County
colson@clackamas.us

Pam O'Brien, P.E. (OR, WA, MT, TX), PTOE
Senior Transportation Engineer
DKS Associates
pjo@dksassociates.com

