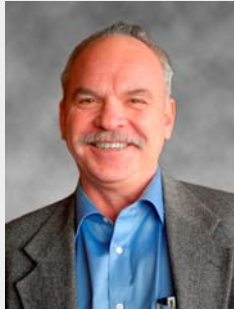




Letter from the President

Wow! Has it been another year for the Washington Section of ITE?! It sure seems to have gone fast.

For those who could not attend, we had an incredible Student Night. We had great attendance and great presentations. We had six student teams competing and in the first time in our collective memories, we had a tie for first place. I think the future of our profession is solid. Hats off to Meagan Powers and Scott Lee for their efforts in bringing this together.



Jim Bloodgood
WA Section President

I would also like to recognize and thank Claudia Hirshey for her generous donation of \$1,321 to the student fund from her campaign fund. This is a very gracious gesture and very much appreciated. Thank you, Claudia!

Looking back over the past year, we have had some incredible accomplishments. First and foremost, we are a financially healthy organization. As such, the Executive Board decided to contribute \$5,550 to the ITE Western District, Student Endowment Fund this fiscal year. The goal of this fund is to expand student initiatives to attract the best and the brightest in the west to the transportation profession by:

(Continued on page 2)

Inside This Issue:

Letter from the President	1-2
Scribe Report	4
Dynamic Message Board	5
Election Results	6
2010 WA Section ITE Award	6

Mark Your Calendars!

Plan ahead and mark your calendars now for upcoming Washington Section meetings and events:

- June 7, 2010 - Washington Section Annual Meeting
- June 8, 2010 - ITE Golf Classic #22, Battle Creek Golf Course
- June 27-30, 2010 - District 6 Meeting, San Francisco, California
<http://www.westernite.org/annualmeetings/meeting.htm>



- August 8-11, 2010 - International Meeting, Vancouver, British Columbia, <http://www.ite.org/AnnualMeeting/default.asp>



(Continued from page 1)

- Waiving ITE dues and District Annual Meeting fees for faculty advisors
- Providing funds for reference books to new student chapters
- Waiving ITE Dues and subsidizing District Annual Meeting fees for students
- Funding travel to District Annual Meetings through student competitions, student papers, student projects, the Data Collection Fund
- Sponsoring special events for students and professionals

The Washington Section is the largest contributor in 2009-10 of any section or chapter or business in the Western District. You should all be proud of this.

Also this year we found out that we are not a tax exempt, non-profit organization. However, we are working with ITE International and their lawyers, at no cost to the section, to rectify this.

We also managed to reconcile our local membership database with that of ITE International. This is important to make sure that local dues are paid which helps keep us financially healthy. As you may know, there are several types of ITE membership. One can be a member of ITE International whose dues typically includes those for district and section membership. Or one could be a member of the district and section. Or one can be a member of the section alone. In the latter two cases, dues might not have been collected. In addition, there is student membership. So, things never quite matched up and, in fact, our databases were significantly different. Throw in people who have retired, moved out of the area or foreign students that have returned to their native countries that were still in our database and it looked like we were losing out on a lot of local dues. It was a painstaking process but in the end it turned out we were not nearly as far off as first thought but it did allow us to identify those section dues we had not been invoicing.

Changing gears, the ITE International Vice President Election has a strange twist this year. There are three candidates. That, in and of itself, is not unheard of. What is unique is that two of the candidates are from the Western District. My concern is that the two Western District candidates may split the Western District vote and hand the election to the third party. Rock Miller is from the Southern California area and was vetted through and nominated by the International Nominating Committee. The other candidate is from the Bay Area and used the petition process to appear on the ballot. Both have been long-time contributors to ITE and to the transportation profession. However, I believe it is important for the Western District and the Washington Section to be united behind one candidate. Therefore, I am endorsing Rock Miller in his bid for this important position. I hope will join me by casting you vote for Rock.

As I close out my term as President, I want to express my sincere appreciation to all the volunteers that make this organization work. We just could not exist without you. I won't name everybody here but I do want to single out the Executive Board. Vice President/Treasurer Katherine Casseday, Secretary Kevin Chang and Past President Nick Ching are outstanding individuals and professionals. It has been a privilege to serve long side them. They are energetic, creative, dedicated and a fun group to work with. Thank you so much for making this year rewarding and successful!

I also want to thank all of you that attend our meetings, support the section and are part of the transportation profession. It makes our work all worthwhile.

With that, I bid you adieu.

Sincerely,

Jim Bloodgood
President, ITE Washington Section



Quality Counts is now serving the Greater Seattle Metro area!

Quality Counts
TRANSPORTATION DATA
COLLECTION SERVICES

Quality Counts is pleased to announce the opening of our new office serving the Greater Seattle Metro area. Quality Counts provides comprehensive transportation data collection services using the latest technology for surveying and product delivery. Contact us for all of your data collection needs.

Contact: Andrew Bellamy
425.968.3465 (Office)
425.922.3930 (Cell)
QualityCounts.net

Quality Counts, LLC | Traffic Data Collection
Charlotte | Fort Lauderdale | Portland | Orlando | Sacramento | Seattle | Tampa



INCA ENGINEERS INC.
A Tetra Tech Company

Phone: 425 635 1000
Fax: 425 635 1150
www.incainc.com



- ▴ Transportation
- ▴ Traffic
- ▴ Survey
- ▴ Bridges
- ▴ Rail



FEHR & PEERS
TRANSPORTATION CONSULTANTS

11410 NE 122nd Way, Suite 320
Kirkland, WA 98034
Ph. 425.820.0100

www.fehrandpeers.com

- Cool Connections
- Multi-Modal Transportation
- Traffic Operations & Design
- Travel Demand Forecasting
- Smart Growth Planning
- Bicycle & Pedestrian Planning
- Impact Fees & Concurrency
- Transit Planning



LaneLight

LaneLight LED In-Road Lights
Flashing Crosswalk Systems
Dynamic Lane Guidance



Lufft
Environmental Sensors



ITEM
www.itemltd.com
866.466.4836



DTG
Women Business Enterprise

Carla Nasr
President

TRAFFIC DATA GATHERING

11410 13th Street SE
Lake Stevens, WA 98258
(425) 334-3348
FAX 335-5979
CarlaN@trafficdatagathering.com
Established 1991



DCI ENGINEERS

Debbie Wick-Harris, P.E., PTOE
Associate-Civil Division
LEED® Accredited Professional

10900 NE 4th Street, Suite 1200
Bellevue, WA 98004
Main: (425) 827-2238
Direct: (425) 818-1737
dwick-harris@dc-engineers.com

Civil and Structural



Perteet

- Transit planning
- Traffic engineering
- Transportation planning & design
- Pedestrian-bicycle planning & design

Offices in Seattle, Everett and Snoqualmie
Call 1-800-615-9900 or visit www.perteet.com

engineers, planners, surveyors



Traffic Count Consultants, Inc.
INNOVATIVE APPLICATION OF ENGINEERING EXCELLENCE

Woodinville
Oak Harbor
Peninsulas:
Olympic
Kitsap
Tacoma
Port Ludlow

LYNNE PIHL, Data Collection Consultant

Phone: 425 861-8866
FAX: 425 861-8877
E-Mail: TC2inc@aol.com
Web Site: TC2inc.com



William Popp Associates
Transportation Planners & Engineers

30 YEARS OF PRACTICAL SOLUTIONS
TO COMPLEX PROBLEMS

Multimodal Transportation Planning
Traffic Impact Studies • Traffic Engineering
Roadway Design • Signals & Street Lighting

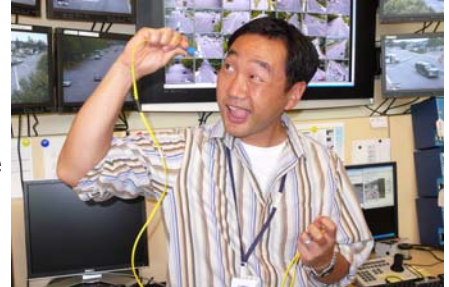
425-401-1030 info@wmpoppassoc.com
14400 Bel-Red Rd., Suite 206
Bellevue, WA 98007

Scribe Report

By Paul Cho, City of Redmond

April 2010 Meeting

Something about a converted warehouse with its mix of old and modern construction amplified by the well worn wooden floors provides a warm and inviting meeting space for this month's ITE Washington Section luncheon meeting. Hosted at the Pyramid Alehouse near Safeco Field, the members spilled into the overflow area as they hunted for their seats. The popularity of April's presentation on the link between traffic engineering and urban space by Nate Larson (URS) drew quite a crowd. I'm sure the free parking and fabulous fish-n-chips didn't hurt either.



After allowing ample time for the members to catch up on recent activities and enjoy their meals, section President, Jim Bloodgood, began the meeting. Without wasting words, he introduced our speaker for the day and passed on the microphone.

Mr. Larson began his presentation with an overview of information presented not too long ago on “complete” and “green” streets. He then turned the “way-back” dial some more to go over safety trends for vehicles and roadway designs of the past. As vehicle design incorporated more safety features, the injury and fatality rates began to drop. However, technology allowing for greater speeds in addition to driver overconfidence with their trust in new safety devices, acted as a balancing force that countered the benefits. Many are very familiar with keeping fixed objects away from travel lanes to lessen the accident potential and severity in case of a crash. However, as Mr. Larson pointed out, this may also lead to a less safe road.

Displaying a schematic of a multi-way boulevard, the points of conflict for vehicles at the intersection totaled about 100. Clearly, on paper, this was not a safe street. Yet, crash data shows they are no less safe than a traditional intersection. The boulevard with 4 lanes of travel separated by a median as well as another median for a parking access road provided a space for different users of the corridor. Many accidents can be linked to inattentive blindness (search Youtube for “how many passes does white team make”) which can hide conflicts. At the intersection, the perceived raised danger level commanded alertness and concentration to safely negotiate conflicting traffic. A dose of discomfort raises the attention level of drivers and the accident rate is far less than its initial appearance would have you believe.

Mr. Larson concluded his presentation by referencing the State Route 527 project in Bothell. This four block corridor will apply some of these multi-way boulevard techniques as well as other features that go “beyond” complete streets.

Following the presentation, Jim Bloodgood announced the upcoming Student Night in May and the Annual meeting in June along with District 6 and International meetings. Scott Lee announced 6 student groups from UW and Seattle U to present at the Ivar's Salmon House on May 11th. The winner of the event will receive a cash prize donated by All Traffic Data, DKS and Transpo.

DYNAMIC MESSAGE BOARD

Join ITE August 8-11 in Vancouver, BC Canada for the ITE 2010 Annual Meeting and Exhibit

The ITE 2010 International Annual Meeting and Exhibit attracts over 1000 delegates including many from around the world. The Technical Program is divided into five tracks, offering 42 technical sessions. The track subjects are Traffic Engineering and Design, Safety, Planning, Transportation Operations, and Professional Development Seminars.

Attending this annual event will give you access to dynamic paper presentations, panel discussions, technical tours, and professional development seminars, which will address the application of 21st century technologies, discuss multifaceted approaches to addressing transportation issues, and explore emerging trends in the industry.

Take note that the Trade Show/Exhibition offers free daily admission to all local operational staff. There are over 50 international suppliers which showcase the newest and most innovative technology and equipment for traffic engineering.

Make sure to visit www.ite.org/annualmeeting for meeting updates.

Advertising (Business Cards & Larger)

To submit your ad, please send a jpg, png, or tif file of the desired ad to Kevin Chang at kevin.chang@kingcounty.gov

Place your ad in the following sizes:

Business card ad for \$100

Full page ad for \$1000

1/2 page ad for \$500

1/4 page ad for \$250

Also send a check for the ad size you desire (ad will run from January 2010 through December 2010) to:

Kevin Chang
King County
201 S Jackson St
Mailstop KSC-TR-0222
Seattle, WA 98104

Call 206.263.6131 for further questions.



Sensys Networks is the world's leading provider of wireless traffic detection and integrated traffic data systems.

Wireless Vehicle Detection

Sensys Wireless Vehicle Detection and Arterial Travel Time Systems provide accurate, real time data with the added benefits:

- Dependable detection available 24/7, no recall
- Flexible installation, no trenching required
- Lowest operating cost, each sensor installed in 10 minutes with no calibration required
- Universal platform, one set of equipment for all applications



2560 Ninth Street, Suite 219
Berkeley, CA 94710

tel / +1 (510) 548-4620
fax / +1 (510) 548-8264

email / info@sensysnetworks.com
Web / www.sensysnetworks.com

2010/2011 Washington Section ITE Election Results

By Torsten Lienau

The Washington Section of ITE completed its election for the 2010/2011 Board on June 7th. Besides the usual stair-step promotions for Katherine Casseday (2010/2011 President) and Kevin Chang (2010/2011 Vice President/Treasurer), the Section was privileged to have two outstanding candidates for Secretary. Carter Danne has served the Section most recently as the newsletter editor, and he's presented several papers at the District level. Jim Ellison has served as a member of the ITE delegation to the National Committee on Uniform Traffic Control Devices for the last 11 years, and when the International ITE Annual Meeting was held in Seattle in 2003, he served on the Local Arrangements Committee. Last year, Jim was honored with the Outstanding Service Award at the ITE Washington State Section conference.

Although both candidates were outstanding and have served the Section and profession admirably, only one can serve as the next Secretary on the Board. The Section is pleased to announce Jim Ellison will serve in that role for the 2010/2011 year. The Section greatly appreciates the service from both candidates and wishes both well. To our outgoing President and 2010/2011 Past President, Jim Bloodgood, the Board wishes to thank Jim for his tremendous leadership this year, and look forward to his continuing participation in the Washington Section.

For the second year in a row, the Washington Section ITE Elections were paperless. Twenty-five percent of the eligible members voted this year, approximately the same percentage that voted when elections were mailed and returned via postcard. Thank you to the membership for participating in the elections. If the Board can improve the improve the election process in the future, please let them know.

Dan Dawson – 2010 Washington Section ITE Award for Outstanding Service

By Katherine Casseday

Daniel L. Dawson, PE is the recipient of the 2010 Washington Section ITE Award for Outstanding Service to the community and the transportation profession. The award was announced at the 2010 Annual Meeting held June 7 in Bellevue, Washington and we will honor Dan in person at the September 14, 2010 luncheon meeting. Dan is a long-standing member of the Institute with a career focus on transportation design and mobility for all travel modes. Dan is a project manager and principal at Otak in Kirkland, Washington. Dan's contributions to the practice of transportation engineering include co-authoring the *Washington State Pedestrian Facilities Guidebook* for WSDOT, developing the design guidelines for pedestrian safety and accessibility, contributing to Transportation Research Board publications as well as the Public Rights-of-Way Access Advisory Committee (PROWAAC) *Special Report: Accessible Public Rights-of-Way, Planning and Designing for Alterations*. He has authored articles for ITE Journal and presents technical papers at ITE conferences to continue the education of the membership in designing for full accessibility and mobility. Dan continues his efforts to educate our members on accessible pedestrian signals (APS) through coordinating the upcoming training session for our Section. It is a pleasure to recognize Dan Dawson in 2010 for his Outstanding Service to the community and Washington Section ITE.



WA Section Board

President

James Bloodgood
Snohomish County
3000 Rockefeller Avenue
M/S 607
Everett, WA 98201
425.388.6419

jim.bloodgood@co.snohomish.wa.us

Vice President/ Treasurer

Katherine Casseday
Casseday Consulting
9726 NE 138th Place
Kirkland, WA 98034-1808
206.450.8758

kcasseday@yahoo.com

Secretary

Kevin Chang
King County
201 S Jackson St
Mailstop KSC-TR-0222
Seattle, WA 98104
206.263.6131
206.296.0176 Fax

kevin.chang@kingcounty.gov

Past President

Nick W. Ching
HNTB
600 - 108th Ave NE, Suite 405
Bellevue, WA 98004
425.456.8551
425.453.9179 Fax
nching@hntb.com

Newsletter Contact Info

If you have any changes in your contact information, please let us know so you continue to receive monthly ITE e-mail announcements and newsletters. To update your information, click on the "Membership" link on the Washington State Section ITE website:

<http://www.westernite.org/Sections/washington/index.htm>