
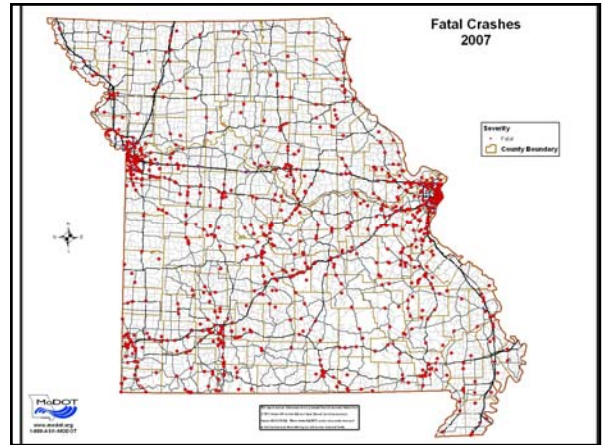


Strategies for Improving Roadway Safety

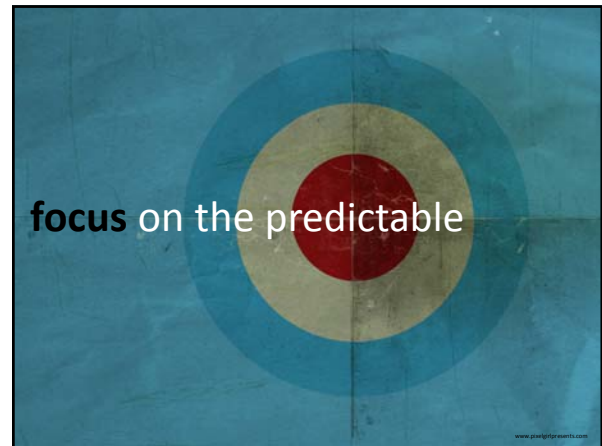
Brian Chandler, P.E., PTOE
Sr. Transportation Engineer
SAIC
brian.e.chandler@saic.com

Fatal Crash Types

| 2003 | 2004 | 2005 | 2006 | 2007 |
|--------------|--------------|--------------|--------------|--------------|
| No Seat Belt | No Seat Belt | No Seat Belt | No Seat Belt | No Seat Belt |
| Run Off Road | Run Off Road | Run Off Road | Run Off Road | Run Off Road |
| Impaired | Impaired | Impaired | Impaired | Impaired |
| Aggressive | Aggressive | Aggressive | Aggressive | Aggressive |





Introduction

- More than 20% of all traffic fatalities occur at intersections.

| Year | Intersection Fatalities |
|------|-------------------------|
| 2000 | 8600 |
| 2001 | 8827 |
| 2002 | 9273 |
| 2003 | 9367 |
| 2004 | 9276 |
| 2005 | 9238 |
| 2006 | 8850 |
| 2007 | 8793 |
| 2008 | 7800 |

Safe Roads for a Safer Future
<http://highlights.dmv.ca.gov>

How to get killed at an intersection

1. Right Angle
2. Left Turn

Safe Roads for a Safer Future
<http://highlights.dmv.ca.gov>

Reducing Intersection Crashes

| Traditional | Systematic | Comprehensive |
|--|--|--|
| <ul style="list-style-type: none"> • Effective at locations • Minimal overall impact | <ul style="list-style-type: none"> • Low Cost Countermeasures • Find Over-representation | <ul style="list-style-type: none"> • Incorporate Enforcement, Education |
| Policy <ul style="list-style-type: none"> • Long-term gains • Standards-based | | |

Safe Roads for a Safer Future
<http://highlights.dmv.ca.gov>

Intersection Treatments

Stop Signs



14

Warning Signs



15

Stop Bars



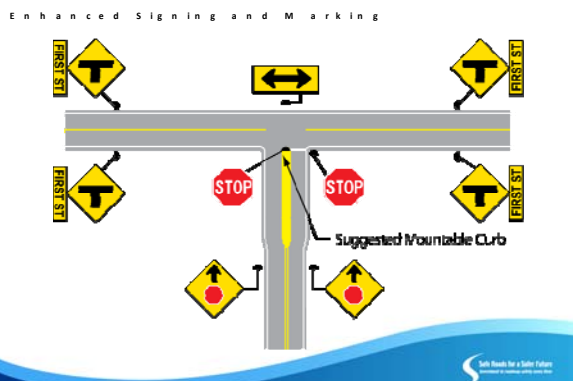
16

Splitter Islands



17

Enhanced Signing and Marking



18

Flashing Beacons



Safety Needs for a Safer Future
http://highways.fhwa.dot.gov

19

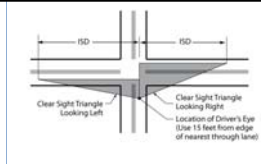
Transverse Rumble Strips



Safety Needs for a Safer Future
http://highways.fhwa.dot.gov

20

Sight Distance Triangles



Safety Needs for a Safer Future
http://highways.fhwa.dot.gov

21

Turn Lanes



Safety Needs for a Safer Future
http://highways.fhwa.dot.gov

22

Bypass Lane (T-intersections)



Safety Needs for a Safer Future
http://highways.fhwa.dot.gov

23

Realign Skewed Intersection



Safety Needs for a Safer Future
http://highways.fhwa.dot.gov

24

Extra Signal Heads



Safety Needs for a Safer Future
www.txdot.gov

25

Reflectorized Backplates



Safety Needs for a Safer Future
www.txdot.gov

26

Automated Red Light Enforcement



Safety Needs for a Safer Future
www.txdot.gov

27

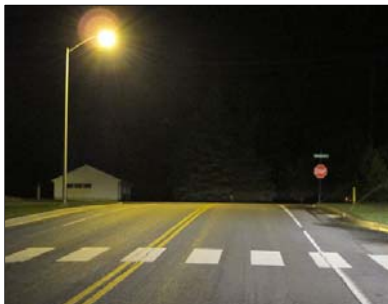
Enforcement Assistance Lights



Safety Needs for a Safer Future
www.txdot.gov

28

Lighting



Safety Needs for a Safer Future
www.txdot.gov

29

Roundabouts



Safety Needs for a Safer Future
www.txdot.gov

30



**Intersection
Questions?**

Brian Chandler, P.E., PTOE
Sr. Transportation Engineer
SAIC
brian.e.chandler@saic.com

