

Measure R

Information Guide



Implementation Plan



Metro

Measure R

Quality of Life improvements - the first five years



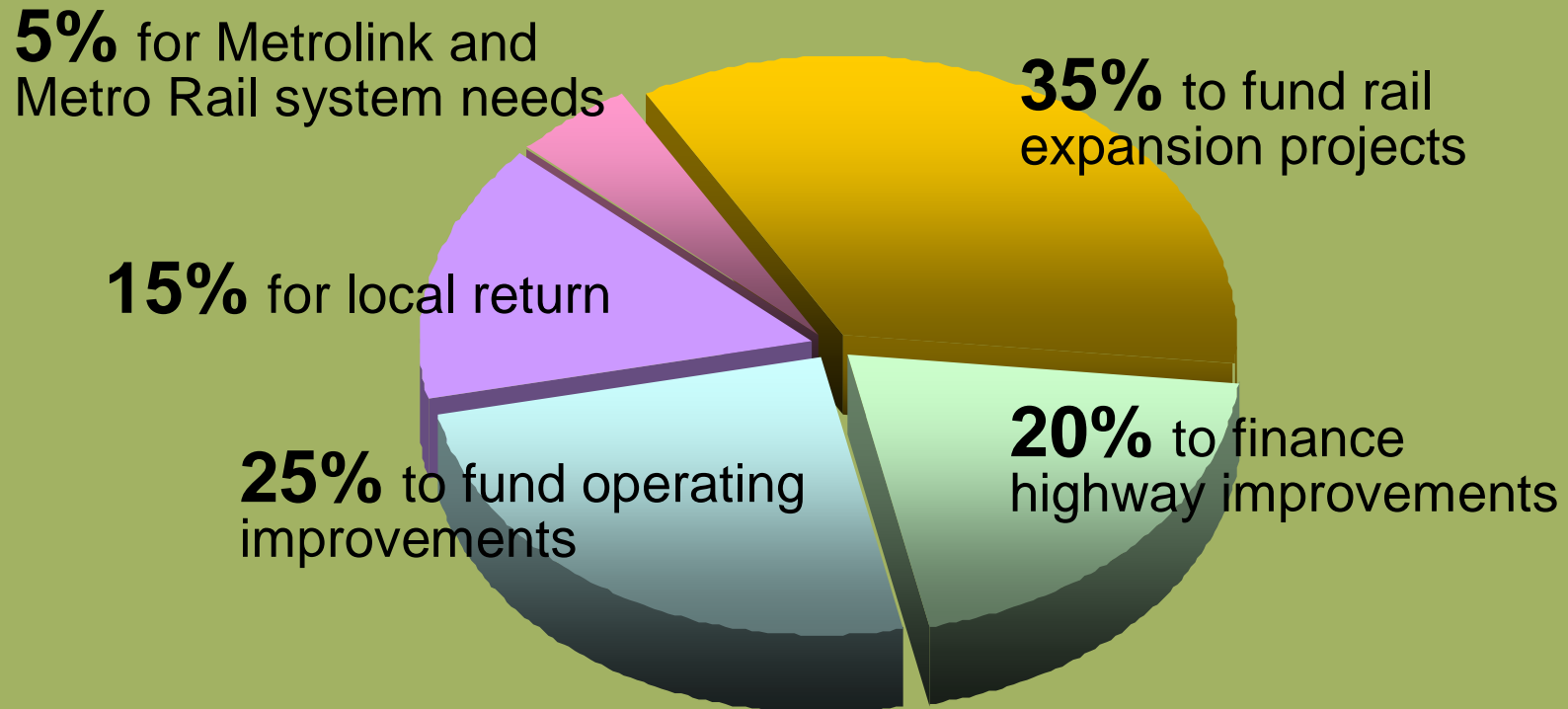
- Return \$3 billion into the local economy
- Create over 50,000 new jobs in Los Angeles County
- Move minimum of 40,000 more people per day onto public transportation
- Convert 30,000 more people per day into shared-rides (carpool/vanpool)
- Eliminate 500,000 metric tons of carbon-dioxide equivalents from our air
- Expand transit-oriented development along new rail lines

Measure R

Improved mobility

Through:

- Expansion of the rail system
- Highway improvements
- Improved local streets and intersections
- Better and safer Metrolink & rail capital
- Improved public transportation



Measure R

Key messages

- The public has spoken
- Promises were made - they will be kept
- It's not business as usual at Metro
- Implementation will be expedited
- Additional funds will be sought to augment 'R'
- Traffic congestion will be reduced
- Will aid in restoring the county's economy
- Metro will partner with cities to maximize progress



Measure R Strategies

- Form strategic partnerships
- Leverage self-help position
- Implement integrated project delivery process
- Stress “Green Benefits”
- Explore fast tracking procurement process
- Showcase benefits of Measure R
- Develop “jump start” plan for each construction project
- Continue to implement strong budget and schedule controls
- Review project escalation assumptions
- Expand working partnerships with cities, communities and local businesses
- Develop “public/private partnership approach”



Measure R

Framework and oversight

- Form Board Project Delivery Committee (established)
- Create Internal Project Delivery Task Force (established)
- Establish Advisory Panel
- Create optimal staffing model for each project
- Establish delivery schedules by project
- Build external partnerships and coalitions (city/business/environmental/labor)
- Adopt governing policies
 - Guidelines for local return, bus operations, clean fuel bus and Metrolink funds
 - Bonding/financing applications
 - Service investment strategies
 - External investment/management



Metro

Board Project Delivery Committee

Director
Richard Katz
Chair

Director
Zev Yaroslavksy
Vice Chair

Director
Don Knabe

Director
Ara Najarian

Director
Pam O'Connor

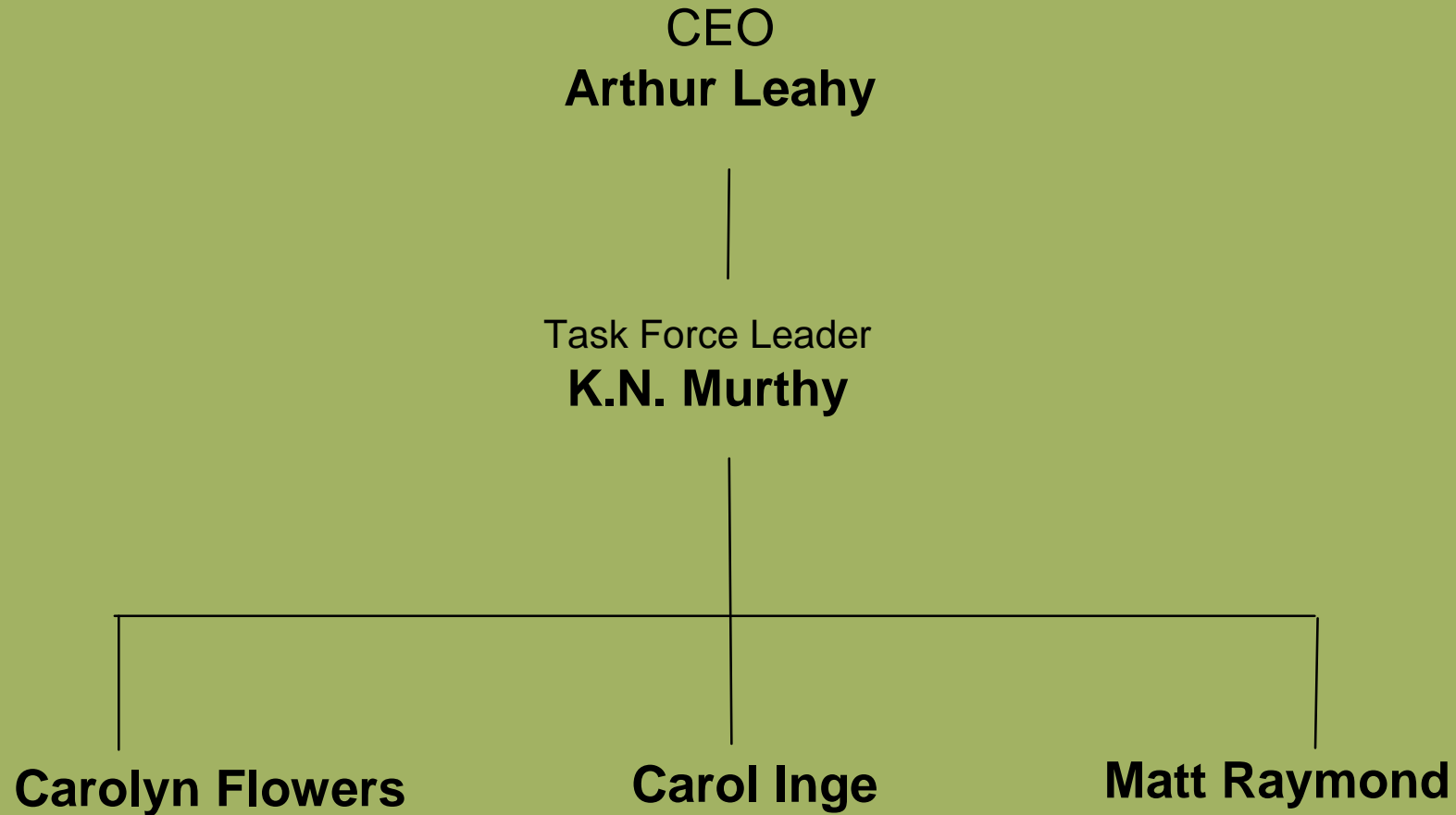
Measure R

Advisory panel

- Construction trade labor union representative
- Environmental engineer or environmental scientist
- Road or rail construction firm project manager
- Public and private finance expert
- Regional association of businesses representative
- Transit system user



Project delivery task force



Support Services

Measure R

Develop Measure R implementation plans

- Rail Expansion
- Highway Improvements
- Bus Service Improvements

Call out Measure R improvements in:

- Long Range Transportation Plan
- Ten-Year Financial Plan
- Bus Operating Plan



Measure R

Address Threats and Opportunities

Threats

- State funding
- Structural deficit

Opportunities

- Federal stimulus package
- Public/private partnerships
- Project acceleration and potential cost saving possibilities
- Additional federal funding (leveraging self-help status)



Measure R

Create governing policies

- Adopt guidelines for:
 - local return
 - bus operations
 - clean fuel bus
 - Metrolink funds
- Evaluate possible and creative bonding/financing applications
- Determine service investment strategies
- Explore external investment/management
 - Public Private Partnership/Public Private Financing



Measure R

The next 90 days

- Establish Advisory Panel
- Work with external supporters to build coalitions
- Conduct baseline study to gauge public opinion/expectations
- Conduct outreach to cities/COGS
- Engage funding partners to advance project delivery and funding
- Form General Manager taskforce to coordinate joint service efforts
- Create Progress Report website & publication



Metro

Measure R

The first six months

- Prepare guidelines for implementation
- Establish staff implementation teams
- Establish legal parameters
- Establish Public Private Partnership & Public Private Financing models



Metro

Measure R

Rail expansion - the first five years

- Open Exposition LRT Phase I
- Begin Exposition LRT Phase 2 Construction
- Complete Orange Line Canoga Extension
- Begin Wilshire BRT Construction
- Begin Crenshaw Corridor Construction
- Begin Green Line to LAX Construction
- Begin San Fernando Valley East North/South Arterials Construction
- Begin Gold Line Foothill Extension Construction
- Begin Regional Connector Construction
- Begin Wilshire Subway Extension Construction



Measure R

Local improvements - the first five years

- Signal synchronization
- Pothole and street repair
- Intersection improvements
- Bicycle lane improvements
- Arterial improvements
- Pedestrian improvements
- Improved transit stops and centers
- Increased local shuttle service



Measure R

Highway improvements - the first five years

- Complete four miles of soundwall program
- Complete major portions of I-5 Capacity Enhancement from the I-605 to the Orange County Line
- Complete Carmenita Road interchange (I-5)
- Complete SR-134 to SR-170/I-5 capacity enhancement



Measure R

Transit Operational Improvements - the first five years

- Maintain low Metro fares for seniors/students/disabled
- Establish reserve fund for operating future projects
- Open Canoga Orange Line extension
- Expand Express and Rapid Bus network
- Achieve operation of 100% clean-air fleet
- Fund improvements to municipal operators
- Improve dial-a-ride and paratransit services (cities/county)



Measure R

Projects Implementation – Bus Operations

- Bus Rapid Improvements
- Express Line improvements
- Local bus improvements
- Improve service for seniors
- Improve services for the disabled
- Increase bus service to rail station



Measure R

Implementation summary - first five years

Rail Expansion

- Open Expo LRT Phase I
- Begin Expo Phase II construction
- Complete Orange Line Canoga Extension
- Begin Wilshire BRT construction
- Begin Crenshaw Corridor construction
- Begin Green Line to LAX construction
- Begin San Fernando Valley East N/S Arterials construction
- Begin Gold Line Foothill Extension
- Begin Wilshire Subway Extension
- Begin Regional Connector construction

Street Improvements

- Signal synchronization
- Pothole and street repair
- Intersection improvements
- Bicycle lane improvements
- Arterial improvements
- Pedestrian improvements
- Improved transit stops and centers
- Increased local shuttle service

Highway Improvements

- Complete four miles of soundwall program
- Complete I-5 Capacity Enhancement from the I-605 to the Orange County Line
- Complete Carmenita Interchange
- Complete R-134/I-710/I-5 enhancement

Operational Improvements

- Maintain low fares
- Begin SFV N/S Rapidways
- Open Orange Line Extension
- Expand Bus Network
- Improve Dial-a-Ride/ Paratransit Services (cities/county)

Measure R

Information Guide



Questions?



Metro