



INSTITUTE OF TRANSPORTATION ENGINEERS

SOUTHERN CALIFORNIA SECTION

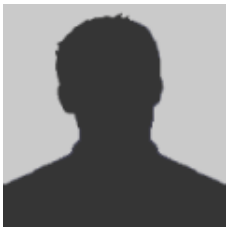
NEWSLETTER

2008 – 2009, Issue No. 1

September 2008

President's Message

Carlos Ortiz, PE, TE, PTOE



As the new president of our section, I would like to welcome our members back and I hope everyone enjoyed their summer vacation.

First, I would like to thank you for your support in allowing me to lead our section during the upcoming calendar year. During my presidency, I want to invite everyone to become more involved in our section. If you would like to participate as our guest speaker and/or have a topic that you have in mind, please contact us. Also, I would like to invite our vendors to continue to participate at our monthly meetings.

At the **June meeting**, we held our annual elections and our new Section Officers were elected. Our section is very lucky to have a number of members that enjoy volunteering for officer or section chair positions. This year, we continue the tradition of having a great team to represent the section. Let's welcome **Mr. Arief Naftali** as our **Vice-President**, and **Ms. Lisa Martellaro-Palmer** as our new **Secretary-Treasurer**. Let's also welcome our Committee Chairs that accepted my invitation to remain as Chair of their Committee and our new Committee Chairs that accepted my invitation to join the team. **Mr. Walter Okitsu** has been appointed to the position of **Legislative Analyst**, **Mr. John Dorado** has been appointed to the **Scribe** position, and **Mr. Omar Alameddine** has been appointed as the **Student Chapter Representative**. There are three vacancies to be filled as indicated on Page 2, so if you would like to volunteer, please contact me.

In **July**, we had a special joint meeting with the **Transportation Research Board (TRB) Highway Capacity and Quality of Service Committee**. The topic for the meeting was "**Looking Ahead to the 2010 Highway Capacity Manual**". We had various speakers discussing some of the upcoming potential changes to the 2010 Highway Capacity Manual. Please see the 2010 HCM "Outline and Delivery" schedule inside the newsletter.

Our **Annual Steak Fry Meeting** was held in early **August** due to the ITE Annual Meeting. We continued our tradition at the Los Angeles Police Academy. It was a pleasure to see that at least seven Past-Presidents from our section attended the meeting.

The **2008 ITE Annual Meeting in conjunction with the Western District** was held in **August** in the City of Anaheim. The meeting featured some great presentations and was well attended on both days. The turn out amongst Southern California colleagues was impressive. **Mr. Zaki Mustafa** and the Local Arrangements Committee (LAC) including **Ms. Ruth Smith, Ms. Janna McKhann, Mr. John Lower, Mr. Rock Miller, and Mr. John Tai**, and the many volunteers did an awesome job at the Annual Meeting.

...Continued on Page 2

Meeting Announcement

Premier Luncheon Meeting

Sponsored by Phoenix Highway Products, Inc.

Wed, Sept. 17, 2008
@ 11:30 a.m.

Sheraton Anaheim
900 South Disneyland Drive
Anaheim, CA 92802
(714) 778-1700

For Reservations Contact:

Lisa Martellaro-Palmer at

lisa.martellaro-palmer@lacity.org

Ph. (323) 957-6823

By 12:00 pm on Fri.,
Sept. 12th, 2008

(E-mail preferred)

See Flyer for More Details

Inside This Issue:



President's Message (Con' t)	page 2
Scribe Report	pages 3
Announcements 2010 HCM Schedule	page 4
Legislative Analysis	pages 5 & 6
Announcements (Con' t)	page 8
Announcements (Con't) Sponsorship	page 9

2007-2008 Southern California Section Officers**President**

Carlos Ortiz, PE, TE, PTOE
RBF Consulting
 Ph. (949) 855-3657
cortiz@rbf.com

Vice-President

Arief Naftali, PE, TE
BOYLE Engineering Corp.
 Ph. (909) 933-5225
arief.naftali@aecom.com

Secretary-Treasurer

Lisa Martellaro-Palmer
City of Los Angeles DOT
 Ph. (213) 928 9665
lisa.martellaro-palmer@lacity.org

First Past President

Ruth Smith, TE, PTP
 Ph. (714) 767-0010
rsmith26@socal.rr.com

Second Past President

Joaquin T. Siques, TE
City of Pasadena
 Ph. (626) 744-6900
jsiques@cityofpasadena.net

2007-2008 Southern California Section Chairs**Newsletter Editors**

Steven Itagaki, PE, TE, PTOE
JMDiaz Inc. (JMD)
 Ph. (626) 820-1137
sitagaki@jmdiaz.com

Scribes

John Dorado
RBF Consulting
 Ph. (949) 855-5779
jdorado@rbf.com

Brian B. Ngo

BOYLE Engineering Corp.
 Ph. (909) 933-5225
brian.ngo@aecom.com

VACANT

2nd Scribe Needed

Industry Coordinator

Janna McKhann
Synchronex/Nextech
 Ph. (714) 289-8940
nextech@cox.net

VACANT

Volunteer Needed

Student Ch. Representative

Omar Alameddine
BOYLE Engineering Corp.
 Ph. (909) 933-5225
omar.alameddine@aecom.com

Student Chapter Liaison

VACANT

Volunteer Needed

Advertising Editor

Julia Wu, PE, PTOE
KOA Corporation
 Ph. (714) 573-0317
jwu@koacorporation.com

Membership Coordinator

Jason Rondou
City of Los Angeles DOT
 Ph. (213) 972-8604
Jason.Rondou@lacity.org

FTA/FHWA Liaison

Lawrence (Jesse) Glazer
FTA/FHWA LA Metro Office
 Ph. (213) 202-3955
Jesse.Glazer@fhwa.dot.gov

VACANT

2nd Volunteer Needed

TE Registration Liaison

Walter Okitsu, PE, PTOE
KOA Corporation
 Ph. (323) 260-4703
wokitsu@koacorporation.com

Webmaster

Andrew Maximous
City of Santa Monica
 Ph. (310) 458-4982
andrew.maximous@smgov.net



Transportation Planning
 Transportation Engineering
 Traffic Engineering
 Traffic System Design /
 Analysis
 Intelligent Transportation
 Systems
 Bus Rapid Transit



14725 Alton Parkway,
 Irvine CA 92618
 949.472.3505
www.RBF.com

President's Message (continued from Page 1)

Ms. Monica Suter, section member and Past-President, was elected as our new ITE Western District President. Please join us in congratulating our new ITE Western District President.

For the September meeting we have a very interesting topic lined up. **Mr. Mark Esposito, PE, TE, PTOE, RBF Consulting**, will present the **Oso Parkway Demonstration Project, Inter-Agency Signal Synchronization Perspective**. This meeting will be held at the Sheraton hotel in the City of Anaheim.

National and state elections will be held in November. There will be various measures on the ballot that are relevant to our profession. In the upcoming newsletters, we will provide you with information related to these measures.

The **Consulting Engineers and Land Surveyors of California (CELSOC)** has changed the name of the organization to the **American Council of Engineering Companies of California (ACEC California)**. Please see their website for more information. (www.celsoc.org)

Finally, please check the ITE Southern California web site (www.itesocal.org) for the latest news, contacts or if you like us to add more information. ♦

August 2008 Scribe Report

By John A. Dorado II



The ITE Southern California Section "2008 Annual Steak Fry" was held last month on Wednesday, August 6th, 2008 at the Los Angeles Police Academy in the City of Los Angeles. This is our annual kick-off meeting for the year 2008-2009. It was a beautiful summer evening, nice breeze, wooded area, festive people, and then BLAST! Its OK, it was only the firing range next door, after all it is the Los Angeles Police Academy. All in all, it was great social gathering, very informal and included all you can eat steak, beverages and more. New board and committee members were introduced as well as acknowledging previous members. To those who have not attended before, I recommend to do so this upcoming year.

"Kimley-Horn truly provides an environment to flourish. It's evident in the responsibilities given to young professionals early in their career. And it's a fun place. We don't just work with co-workers—we work with friends. Each year gets better and better."
 Steve R.
 Engineer-in-Training
 Kimley-Horn, 3 years

We hire the best and the brightest. Work on real projects from day one. Put your career in high gear and learn what it means to...

BEST FIRMS To Work For CIVIL ENGINEERING
 2007

HOT FIRM
 ***** HALL OF FAME
 2005, 2006, 2007, 2008
 Fortune "100 Best Companies to Work For"

Love Your Job.

Kimley-Horn and Associates, Inc.

www.kimley-horn.com/kha/6

Also, there are still several section chair vacancies including the Second Technical Coordinator, Second Scribe and the Student Chapter Liaison. Those who wish to volunteer please contact us.

Last month was also the 2008 ITE Joint Annual Meeting and Exhibit in conjunction with the Western District section and was located at the Anaheim Convention Center. The Annual Meeting was held from Sunday August 17th to Wednesday, August 20th. It was four days of networking, visiting the exhibitors, and attending technical sessions, seminars and tours.

The meeting kicked-off on Sunday, August 17th with the "Networking Reception" in the Exhibit Hall. All of the exhibitors were set-up while beverages and appetizers were available in a casual setting. It was a sizeable turn out for a Sunday evening.

The Exhibit Hall was open from Monday, August 18th to Tuesday, August 19th and was filled with vendors showcasing new and innovative technologies as well as familiar ones. Private engineering consulting firms and public agencies were included amongst the list of exhibitors.

Technical sessions were held from Monday, August 18th to Wednesday, August 20th. The technical sessions covered a wide spectrum of traffic engineering and transportation planning topics such as bus rapid transit, parking management, freeway design operations and safety, corridor studies, and many more. The sessions also included product showcases, advances in transit, and presentations for miscellaneous transportation projects and programs.

Seminars, technical tours, and guest tours were also provided throughout the meeting.

There was a strong presence from local public and private sectors including student chapters. It was reminiscent of a reunion for those who have been in the industry for several years. I'm sure it was a great experience for everyone.

This 2008 ITE Joint Annual Meeting and Exhibit lent itself to be a great place to network, market services, learn about new products/technologies, and learn about local, national, and international projects. It was a successful event socially, technically, and educationally. ◇

Announcements

Highway Trust Fund Update

Walter Okitsu, Legislative Analyst

On Wednesday, September 10, the US Senate passed HR 6532 to restore \$8 billion to the Highway Trust Fund by transferring funds from the General Fund. The bill had passed the House of Representatives easily back in June, but the Bush Administration threatened to veto the bill, demanding that about \$3.2 billion of the restoration be loaned from the Mass Transit Fund. Senators from urban areas strongly opposed this loan, but other senators managed to stall the bill.

In early September, Mary Peters announced that the Highway Trust Fund was expected to reach a zero balance between mid-September and October 1. Motorists were buying less gasoline, and therefore, the 18.4 cents per gallon Federal excise tax was resulting in less revenue. USDOT informed the states that payments for projects would be delayed until the Highway Trust Fund could be restored. She urged Congress to pass the bill, effectively signaling a change of position from the Bush Administration. When it became clear that the President would no longer veto it, the Senate passed the bill easily by voice vote. As of September 11, the House is expected to amend it to expedite the enactment date, so that the states can start receiving their payments as soon as the President signs the bill.

The fact that the Highway Trust Fund would be emptied should have been no surprise, but the debate over how to replenish it took all summer. The Democrats argued that the \$8 billion from the General Fund was merely a pay back of money taken from the Highway Trust Fund 10 years ago. Republicans argued that the money could come from other sources, like the Mass Transit Fund or by eliminating many of the earmarked projects (like the already terminated "Bridge to Nowhere") in the SAFETEA-LU bill. The zero balance in the fund sped up that debate. ♦



UCLA Offers Traffic PE Exam Prep Class

UCLA Extension is offering its annual preparation class for the Traffic Engineering PE examination on 6 Saturdays, beginning September 13 and leading right up to the PE examination to be held Friday, October 24, 2008. Mike Bagueri of the City of Pasadena is the instructor. You can find more information and sign up at <http://www.uclaextension.edu>. ♦

Announcements Continued on Page 8

2010 Highway Capacity Manual

Outline and Delivery Schedule

(Draft Delivery Dates)

Volume 1: Concepts

- | | |
|--------------------------------------|--------------|
| 1. HCM User's Guide | (7/08, 4/09) |
| 2. Applications | (6/08) |
| 3. Modal Characteristics | (5/08) |
| 4. Traffic Flow & Capacity Concepts | (7/08) |
| 5. Traveler Perception Concepts | (9/08) |
| 6. Analysis Tools | (11/08) |
| 7. Interpreting & Presenting Results | (3/09) |
| 8. Policy Considerations | (11/08) |
| 9. Glossary & Symbols | (5/09) |

Volume 2: Uninterrupted Flow

- | | |
|------------------------------|---------|
| 10. Freeway Facilities | (5/09) |
| 11. Basic Freeway Segments | (2/09) |
| 12. Freeway Weaving Segments | (9/08) |
| 13. Ramps & Ramp Junctions | (6/08) |
| 14. Multilane Highways | (2/09) |
| 15. Two-Lane Highways | (10/08) |

Volume 3: Interrupted Flow

- | | |
|--|---------------|
| 16. Urban Street Facilities | (5/09) |
| 17. Urban Street Segments | (10/08) |
| 18. Signalized Intersections | (3/09) |
| 19. Two-Way Stop-Controlled Intersections | (2/09) |
| 20. All-Way Stop-Controlled Intersections | (6/08) |
| 21. Roundabouts | (10/08, 2/09) |
| 22. Interchange Ramp Terminals | (4/09) |
| 23. Off-Street Pedestrian & Bicycle Facilities | (7/08) |

Volume 2: Uninterrupted Flow

- | | |
|------------------------------------|----------------|
| Comprehensive Cast Studies (HCMAG) | (11/08, 5/09) |
| Advanced Applications | (11/08, 5/09) |
| Technical Reference Library | (8/08, 5/09) ♦ |

Legislative Analysis

By Walter Okitsu, PE, PTOE



Frantic Summer in the State Capitol

I've agreed to serve as Legislative Analyst for the ITE Southern California Section, taking on a role so well served by Louis Rubenstein. Do you realize how hard it is to start writing about legislative activities in August of an even-numbered year? These are the last days of the legislative session in the State Capitol, when senators and assemblymen and Governors really play hard ball in a rush to do what they should have done in the previous 23 months. This is the month when bills are amended seemingly every hour, and a bill that might have converted Traffic Engineering registrations to practice licenses become gutted and turned into a bill on human milk. That was 2 years ago and I'm still bitter, but more on TE licensing later. Anyway, this column could be very outdated by the time you read it, but hopefully you'll learn something.

Toll Collection in I-10 and I-110 Carpool Lanes

Speaking of gutting a bill, State Senator Mark Ridley-Thomas has gutted SB 1422 that was supposed to deal with jurisdictional issues between the High Speed Rail Authority and Caltrans. He converted it into a bill we're more likely to care about, allowing single-occupant vehicles to pay tolls to enter the San Bernardino Freeway I-10 busway and the Harbor Freeway (I-110) Transitway. The LA County MTA needs the state legislature to approve this bill in order to receive \$210 million from the Federal government for these HOT lanes. The Feds are having trouble finding takers for this money. The state legislature of New York turned the money down last April when it was offered to New York City to create a toll zone for lower Manhattan. It's funny how it's up to legislators from the rest of the state to decide whether a local agency can get funded from the US government. Ridley-Thomas, usually on the side of the financially downtrodden, decided to push this bill to go along with the constituents who want to do pay their way into the rideshare lanes.

As of the August 31, 2008, the deadlines for all bills to pass, SB 1422 went to the Governor's office for signature.

Anybody Still Listening to Mary Peters?

At the Federal level, US DOT Secretary Mary Peters has been busy promoting a new policy on transportation funding, saying that the current gasoline tax system is broken, and tolls and congestion pricing are the answer. Unfortunately for her, she's becoming irrelevant. No matter what your views may

be on her or the Bush Administration, it's clear that these ducks are getting lamer each day.

The Governor, Still Relevant

Governor Schwarzenegger still has two more years, which is good because he hasn't yet gotten a handle on solving the state budgeting process. It's possible this is beyond what any one man can solve, no matter how buff. He's butting heads with the State Controller on whether to pay state employees minimum wage when there's no budget. He has declared that no bills will get past him until the legislature passes a budget. Still, he can be reasonable. He's let a couple of bills slip through for ballot issues we can vote on in November. One was AB 3034 (Galgiani), which revises the High Speed Rail ballot measure to emphasize a southern terminus in Anaheim, rather than Los Angeles. Next month's issue will cover that ballot measure (Proposition 1A) in more depth. The other bill allows LA County voters to decide on a ½ cents sales tax for transportation. But the Governor is helping to undermine LA's local sales tax increase by requesting a November ballot measure for a statewide one-cent temporary sales tax to finance the state deficit.

Don't Spend That Money Yet!

Those of you in LA County waiting for that half-cents sales tax money should not splurge too much on champagne: the measure requires 66.7% of the voters. Initially, this tax hike proposal could not even get 60% of the five County Supervisors to allow it to reach the voters. The money is intended for a variety of projects, much of it on Westside projects like heavy rail transit to Santa Monica. Eventually Supervisor Knabe gave in and decided to let the electorate speak. Now with the Governor's additional 1% state sales tax increase, voters are asked to increase the sales tax from 8.25% to 9.75% in LA County if all these measures pass. Much as I'd like to see a Subway to the Sea, it appears I will still have to commute single-occupancy or awhile, emit carbons, and endanger the polar bears.

Continued on Page 6



ird
INTERNATIONAL ROAD DYNAMICS INC.

**World Leader in
Transportation Technology Solutions**

ITS Solutions • Traffic Data Collection
Truck Enforcement • In-Vehicle Systems
Toll Systems • Work Zone Safety Systems

www.irdinc.com

Legislative Analysis (continued from Page 5)**Sprawl-bashing Bill Survives**

At press time (late August), Senate Bill 375 (Steinberg) is moving toward passage. This bill would give priority of \$5 billion in state transportation funds toward communities that comply with smart growth objectives – environmentalists like that part – and make it more difficult for opponents to halt housing projects that meet local zoning ordinances – builders like that part. A combination of high gasoline prices, concern about global warming, and the fact that it's now tough for developers to sell a home out in the hinterland is causing all parties to compromise into a bill that has a good chance to become law by the time you read this. Not that any Republican legislators will vote for this bill, but they're outnumbered. Many regional transportation agencies are concerned that that road projects were not included in some of the provisions meant to streamline projects, but did not oppose the bill.

As of August 30, 2008, SB 375 was sent to the governor for signature. I can't imagine that Governor Schwarzenegger would veto a greenhouse-gas bill, but who knows?

South Pasadena's Support Didn't Help

An interesting bill that didn't have a chance would have allowed for private financing of the I-710 freeway, to be tunneled beneath South Pasadena. The bill, SB 1350 (Cedillo), was even supported by the City of South Pasadena. *I'll repeat that: a bill for the 710 Freeway was supported by the City of South Pasadena!* But the bill was killed by Professional Engineers in California Government (PECG), essentially the Caltrans labor union, following their mantra that only state employees should design highways in California. I know some of you are PECG members: your lobbyists in Sacramento are tough.

Tolls, Tolls, Tolls

Another bill that died, AB 3021 (Nava) would have established a state Transportation Financing Authority that could authorize local transportation agencies to charge tolls. The bill was brought back to life with amendments that would prohibit converting currently free lanes into toll lanes. Two other toll road bills, AB 1954 (Jeffries) and SB 1316 (Correa) would authorize high-occupancy/toll (HOT) lanes within Riverside County on I-15 and Route 91, respectively. We're hearing a lot of talk about toll collection as a user fee, but isn't the gasoline tax, which has been stuck at the same rate for the last 16 years, a user fee too? And even if people avoid the gasoline tax by purchasing smaller cars, hybrids, electric cars, fuel-cell cars, or by carpooling and riding transit, isn't that a good thing? OK, now you know, I'm glad Mary Peters is on the way out.

As of August 30, 2008, both AB 1954 and SB 1316 was sent to the Governor's desk for signature.

It's true, Motorcycles Can Be in HOV Lanes

Mary Peters (again, the US DOT Secretary), is known to ride a motorcycle to work. She might be glad to hear AB 2617 (Duvall) has successfully amended the Vehicle Code, ensuring that CalTrans post signs indicating that it's OK to ride motorcycles in HOV lanes. Have you noticed that a lot more motorcycles are in those HOV lanes lately, and everywhere else for that matter? According to state and federal law, motorcyclists have the right to be there. Now the State will post signs to confirm that.

Ship Emissions from Ports.

My predecessor for this column, Louis Rubenstein, has kept you informed on Federal legislation regarding emissions from ships. HR 802 (Oberstar), a bill controlling pollution from large ships, became enrolled as law this summer. Two more stringent bills are stuck in limbo, though: S1499 (Boxer) was placed on the Senate Legislative Calendar in July 2008, and HR2548 (Solis), to amend the Clean Air Act to reduce air pollution from marine vessels, was referred to the House Energy Committee back in May 2008.

Traffic Engineering As A Practice?

Another bill is likely to appear in the 2009-2010 California legislative session to convert traffic engineering from a title-protected registration into a practice license. I know, because I helped write it. Sponsors are being gathered. An author is being selected. Support is being solicited. I must remain mysterious. You'll hear more about it next month.

Also next month: Oxnard's ballot measure to allow nothing to be built until every intersection is at Level of Service C or better.

Write to Me, Not the Editor

As you can tell, my first column is a bit free-wheeling, with some of my opinions injected here and there. ITE's Southern California Section newsletter doesn't have a Letters to the Editor section, so if you disagree with me, you'll have to e-mail me directly at wokitsu@koacorporation.com . ◇



Phoenix Highway Products, Inc.



ABOUT PHOENIX HIGHWAY PRODUCTS, INC.

Phoenix Highway Products, Inc. (PHP) has been the exclusive local distributor for numerous traffic signal control products for nearly 10 years.

We not only supply the most complete line of traffic signal control products throughout the Southwest Region; we also provide the highest level of support. Over the years, we have built a close and productive relationship with all of our customers.

PHP employs a highly qualified, sales, estimating and customer support staff which includes three IMSA III technicians and three level II.

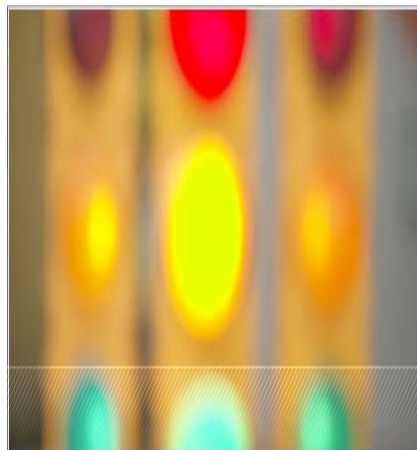
Our corporate headquarters is in the heart of downtown Phoenix and houses a fully functional training center and sizable product inventory.

Founded by our president and owner, Donna Matthews, PHP boasts a highly experienced team of professionals.

EXCLUSIVE SIEMENS DISTRIBUTOR FOR SOUTHERN CA

Phoenix Highway Products, Inc. is proud to offer the following Siemens products for the Southern CA Region:

- Intersection Management
- Traffic Management Software
- Cabinets
- Controllers
- Detectors
- Signal Assemblies
- Signal Hardware



Phoenix Highway Products, Inc.
Corporate Headquarters:
2631 N.37th Drive
Phoenix, AZ 85009
(p) 602.344.7770 (f) 602.344.7771

SIEMENS

Announcements (continued from Page 4)



Iteris, Inc. leads the traffic management market in the development and application of advanced technologies that reduce traffic congestion, minimize environmental impact and improve the safety of our surface transportation system. We have created a dynamic team of professionals throughout the country who are passionate about transportation and making an impact in the industry.

We have many exciting opportunities available throughout our growing offices in California: (Long Beach, Los Angeles, Santa Ana and Ontario)

Transportation Engineers/Planners

We're seeking *mid to senior level* professionals with the ability to assist with and/or take charge of conducting transportation plans, transportation planning studies and operational studies while managing small to medium sized projects. These positions may also require business development

activities including outreach, proposal preparation and interviews. We're seeking highly motivated individuals with excellent communication and analytical skills. 5 – 10 years experience required.

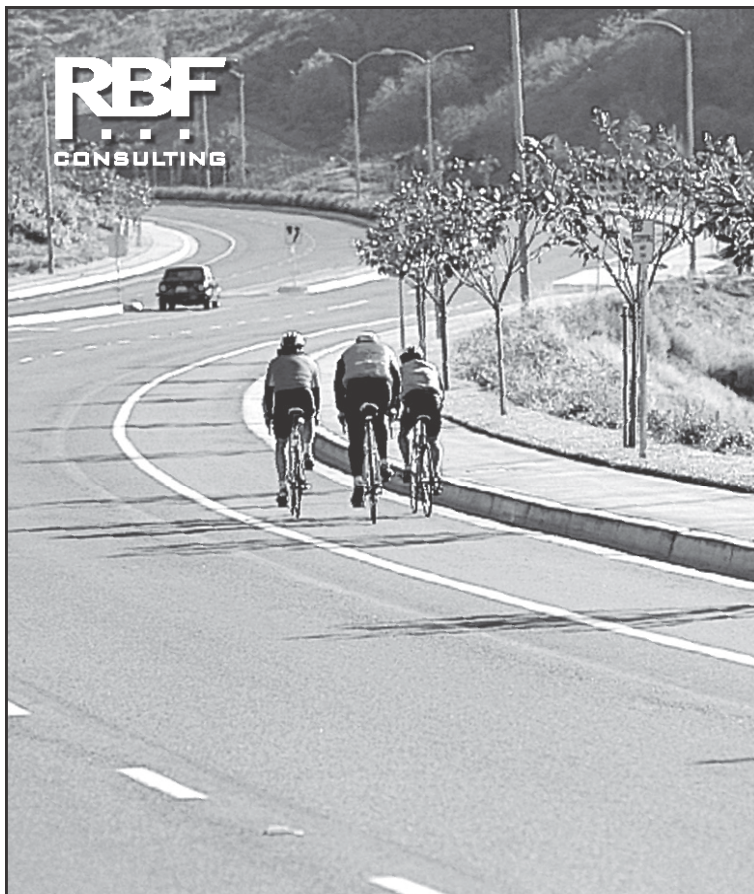
For more detailed job descriptions visit our website at <http://www.iteris.com>.

Confidential resumes or letters of inquiry can be sent to jobs@iteris.com.

We also have a high demand for Mid, Senior and Management level positions throughout the U.S. Further information can be found on our website.

If you are interested in working for a company that offers a casual working environment, flexible work schedule, competitive salary and benefits package as well as the opportunity to transport your career – and Iteris – to the next level, we encourage you to learn more about Iteris! ♦

Announcements Continued on Page 9



Transportation Engineering/Public Works Project Managers – Irvine, Camarillo & Ontario, CA

RBF is seeking Project Managers to lead a team of engineers and design staff in the development of technical transportation design work associated with Caltrans freeway, highway and local roadway improvement projects. Position requires a BSCE, PE, and 7+ years of progressively responsible experience in the design and management of transportation/public works projects. A strong background in AutoCAD and/or Microstation is essential.

Bridge Design Project Engineer - Irvine, CA

RBF has an additional need for an experienced Project Engineer to work on newly awarded state highway design projects. Requirements include 5+ years experience, a career focus in bridge design and experience in bridge project development - initial studies (APS) to final PS&E for Caltrans reviewed projects. Position requires California PE and proficiency in preparation of design calculations, quantities, estimates and specifications.

RBF offers excellent compensation, benefits packages and relocation assistance.

www.rbf.com

Email resumes to: hmail@rbf.com
EOE M/F/D/V

ENGINEERING PLANNING SURVEYING

Announcements (continued from Page 8)



Associate Engineer (Transportation) – City of Costa Mesa, CA – (Salary: \$6,766 - \$9,067/mo, plus

excellent benefits package. Employees contribute 1% of their salary on a pre-tax basis towards the enhanced 2.5% @ 55 CalPERS retirement formula, which is anticipated to become effective on 10/1/08.) The Associate Engineer (Transportation) position performs responsible professional and administrative work in the field and office, as well as supervises professional, technical and clerical staff and consultants. Requires a Bachelor's degree with major coursework in Civil Engineering. Current certification as a registered Civil Engineer and/or Traffic Engineer in the State of California is highly desirable. Requires responsible and professional engineering work exp in designing and inspecting streets, storm drains, traffic signals, transportation design, grading plans, and other public works related projects, and a minimum of three years of FT exp in project mgmt and supervision of technical/professional personnel. Recruitment is open until filled. For more information or to apply for this position, please visit the City's website at: www.ci.costa-mesa.ca.us. ◇

Foothill South 241 Freeway

The National Oceanic and Atmospheric Administration (NOAA) has set the date for the public hearing regarding the completion of the **Foothill South 241 Freeway**. The hearing will be held on **September 22 from 10:30 AM to 8:30 PM** in the O'Brien Hall at the Del Mar Fairgrounds, 2260 Jimmy Durant Boulevard, Del Mar, CA 92014. More information can be found at www.noanews.noaa.gov/stories2008/20080825_hearing.html. ◇

Newsletter Articles

The newsletter is looking for more member-submitted content to fill its pages. It is a great way to share information as well as your insights and opinions about our industry amongst a large community of peers. If you are interested in writing an article, please contact one of the editors, either Steve Itagaki or Brian Ngo, for more details. You may find their contact information on Page 2 of this newsletter. ◇

Newsletter Sponsorship

This newsletter is a perfect venue for advertising your products and services, as it is circulated nine (9) times a year to more than 700 ITE recipients all over Southern California. Advertisements are priced reasonably for the benefit of our members.

There is no charge for brief job announcements or course announcements (about 100 words) that would be of interest to our members. Free announcements may be edited or condensed as necessary, though. Thank you in advance for your contribution to the ITE Southern California Section. ◇

Newsletter Sponsorship

On behalf of our Newsletter committee, I, Julia Wu, would like to thank you, all currently-committed sponsors, for your support. It is thanks to your help in sharing the production costs that makes the newsletter distribution possible and allows us to increase our student support. I hope the advertisements in our newsletter have contributed to raising your profiles in the local transportation industry. Please note that with the electronic newsletter, the ads are now full-page and in color. To our prospective sponsors, I encourage you to make your companies better known in the community. We have vacancies **after February**. Feel free to contact me, Julia Wu, at jwu@koacorporation.com, to schedule your sponsorship ad. ◇

Jan-08	DKS Associates
Feb-08	International Road Dynamics, Inc.
Mar-08	Minagar & Associates
Apr-08	RBF Consulting
May-08	Iteris, Inc.
Jun-08	Al Grover & Associates
Sep-08	Minagar & Associates
Oct-08	KOA Corporation
Nov/Dec-08	LSA Associates, Inc.
Jan-09	Iteris, Inc.
Feb-09	Phoenix Highway Products, Inc.

If you find any factual errors, have comments about any of the things you have read in this newsletter, or have suggestions on how to improve the newsletter, please e-mail one of the editors: Steve Itagaki (sitagaki@jmdiaz.com) or Brian Ngo (brian.ngo@aecom.com).

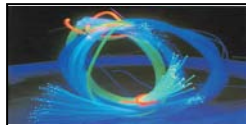
MINAGAR & ASSOCIATES, INC.

15 Years of Excellence



- 2007 - Winner of the ASCE's Outstanding Public/Private Sector Civil Engineering Project in Metropolitan Los Angeles 
- 2005 - Winner of the APWA's Best Traffic Congestion Mitigation Project of the Year in Southern California
- 2004 - Top Nominee of Transportation Foundation's Highway Management Program in the State of California
- 2003 - Winner of the PTI's Best Transportation Technology Solutions Award in the United States 
- 2002 - Winner of the ITS-CA's Best Return on Investment Project Award in the State of California 
- 2000 - Award of Excellence in Service by Los Angeles County MTA/Metro 

Celebrating 15 Years of Design Excellence



- **ITS (Intelligent Transportation Systems)**
- **Traffic Engineering**
- **Transportation Planning**
- **Homeland Security**

MINAGAR & ASSOCIATES, INC.

18662 MacArthur Blvd., Airport Business Center, Suite 435
Irvine, CA 92612

Tel: (949)727-3399

Tel: (949)553-0222

Fax: (949)727-4418

Fax: (949)553-0232

www.minagarinc.com



INSTITUTE OF TRANSPORTATION ENGINEERS



Present
A Premier Luncheon Meeting this September

**“Oso Parkway, Demonstration Project
Inter-Agency Signal Synchronization Perspective”
By Mark Esposito – P.E., T.E., P.T.O.E.
Senior Associate, RBF Consulting**

TO BE HELD ON:

**Wednesday,
September 17, 2008
at 11:30 a.m.**

Sheraton Anaheim

900 South Disneyland Drive
Anaheim, CA 92802

Get Direc

(714) 779-1700

**PARKING IS \$5/VEHICLE
SO PLEASE CARPOOL,
PARKING WILL BE VALIDATED**

**\$30 with advance reservation
(Before 12:00 p.m., Friday, Sept. 12th)
\$35 at the door \$10 for students**

FOR RESERVATIONS, please contact:

Lisa Martellaro-Palmer

*Secretary-Treasurer of Southern CA
Section*

E: lisa.martellaro-palmer@lacity.org,

(Email preferred)

Ph. (323)957-6823



Directions:

**From Central and South Orange
County**

Take 5 Fwy north, Exit Harbor Blvd.
(exit 110), Turn Right on Harbor Blvd.,
Left on Ball Rd. and Right on
Disneyland Dr.

From Los Angeles/Pasadena

Take 5 Fwy south, Exit Disneyland Dr.
(exit 110B) toward Ball Rd. and make
a slight left onto Disneyland Drive.